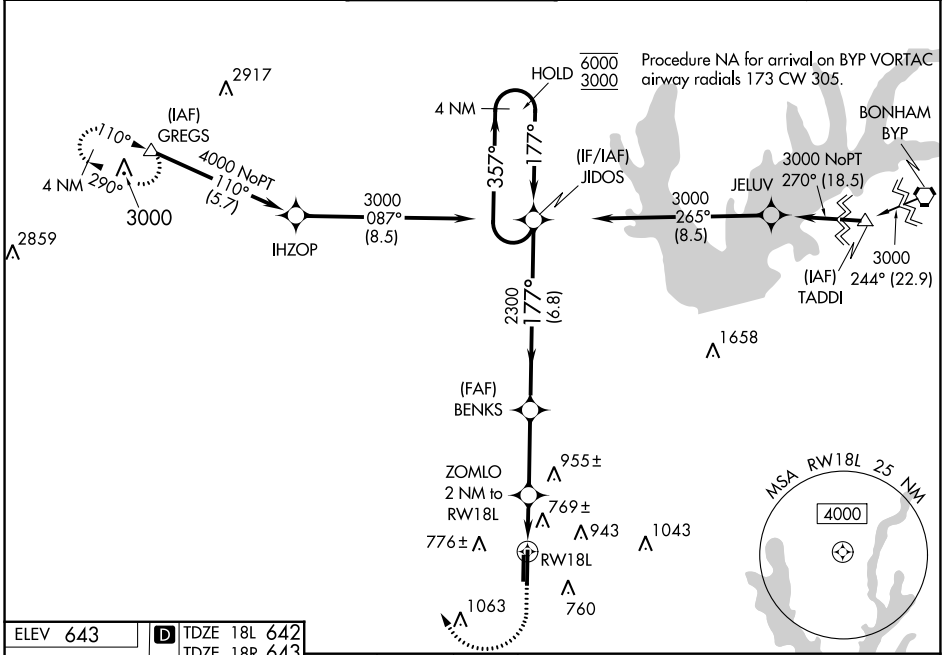


WAAS CH <b>82143</b> <b>W18A</b>	APP CRS <b>177°</b>	Rwy Idg TDZE Apt Elev	18L <b>6502</b> <b>642</b> <b>643</b>	18R <b>5003</b> <b>643</b> <b>643</b>
--	------------------------	-----------------------------	--	--

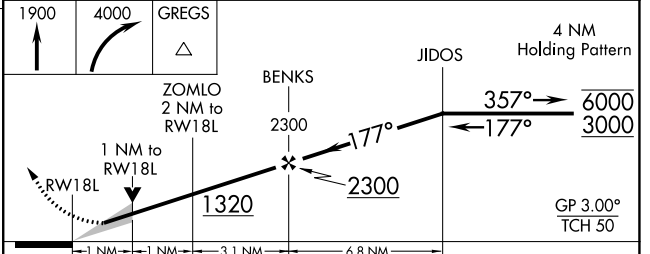
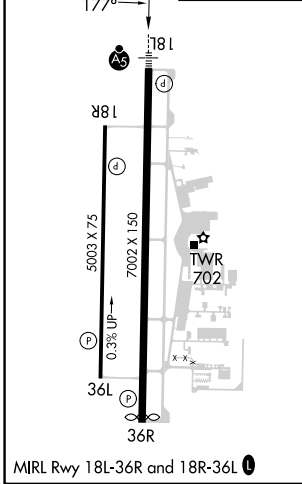
# RNAV (GPS) RWY 18L

DENTON ENTERPRISE (D'TO)

RNP APCH-GPS.		MALSRL		MISSED APPROACH: Climb to 1900 then climbing right turn to 4000 direct GREGS and hold.	
<p><b>⚠</b> For uncompensated Baro-VNAV systems, LNAV/VNAV NA below -9°C or above 54°C. For inop ALS, increase LNAV/VNAV all Cats visibility to 3/8 SM, and LNAV Cats C and D to 1 SM.</p>		<p><b>AS</b></p>			
ATIS <b>119.325</b>	REGIONAL APP CON <b>118.1 306.95</b>	DENTON TOWER* <b>119.95</b> (CTAF) <b>0</b>	GND CON <b>123.95</b>	CLNC DEL <b>123.95</b>	UNICOM <b>122.95</b>



ELEV 643	<b>D</b> TDZE 18L 642
	TDZE 18R 643



CATEGORY	A	B	C	D
LPV DA		842-1/2	200 (200-1/2)	
LNAV/VNAV DA		950-1/2	308 (400-1/2)	
LNAV MDA	1020-1/2	378 (400-1/2)	1020-3/4	378 (400-3/4)
SIDESTEP 18R	1100-1	457 (500-1)	1100-1 1/2	457 (500-2)
<b>C</b> CIRCLING	1100-1	1260-1	1380-2	1380-2 1/4
	457 (500-1)	617 (700-1)	737 (800-2)	737 (800-2 1/4)

SC-2, 11 JUL 2024 to 08 AUG 2024

SC-2, 11 JUL 2024 to 08 AUG 2024