

WAAS CH 70336 W17A	APP CRS 170°	Rwy Idg TDZE Apt Elev	4669 574 575
--	------------------------	-----------------------------	---

RNAV (GPS) RWY 17

LOUISVILLE/WINSTON COUNTY (LMS)

RNP APCH - GPS.

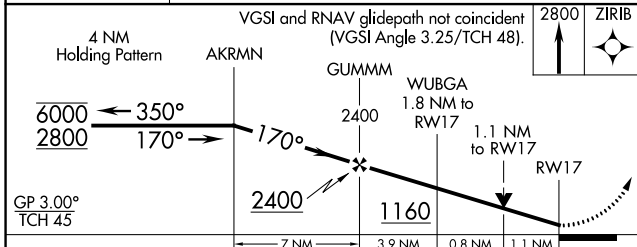
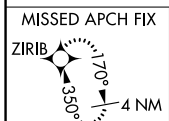
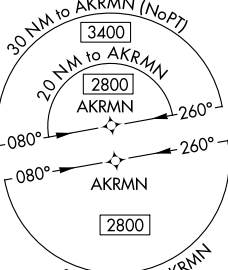
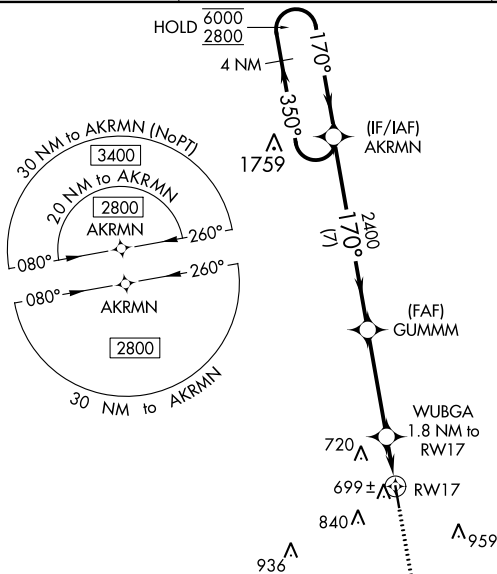
⚠ Rwy 17 helicopter visibility reduction below $\frac{3}{4}$ SM NA.
⚠ For uncompensated Baro-VNAV systems, LNAV/VNAV NA below -16°C or above 54°C.

MISSED APPROACH:
Climb to 2800 direct
ZIRIB and hold.

AWOS-3PT
118.325

MEMPHIS CENTER
132.75 263.0

UNICOM
122.7 (CTAF) 0



CATEGORY	A	B	C	D
LPV DA		824-1	250 (300-1)	
LNAV/VNAV DA		880-1	306 (400-1)	
LNAV MDA	960-1	386 (400-1)	960-1½	386 (400-1½)
C CIRCLING	1020-1 445 (500-1)	1260-1 685 (700-1)	1260-2 685 (700-2)	1260-2¼ 685 (700-2¼)

MIRL Rwy 17-35 **0**

SC-4, 11 JUL 2024 to 08 AUG 2024

SC-4, 11 JUL 2024 to 08 AUG 2024