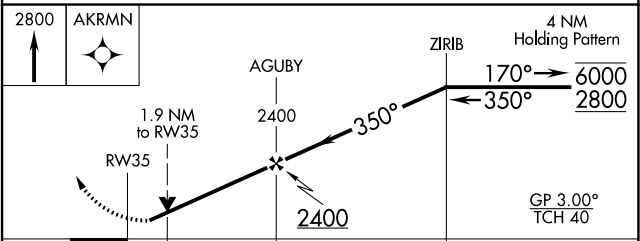
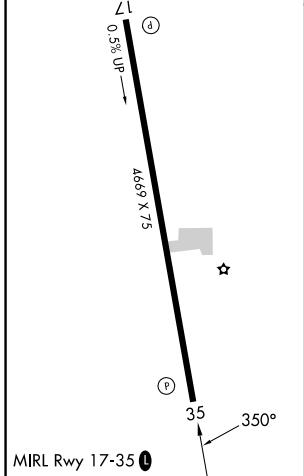
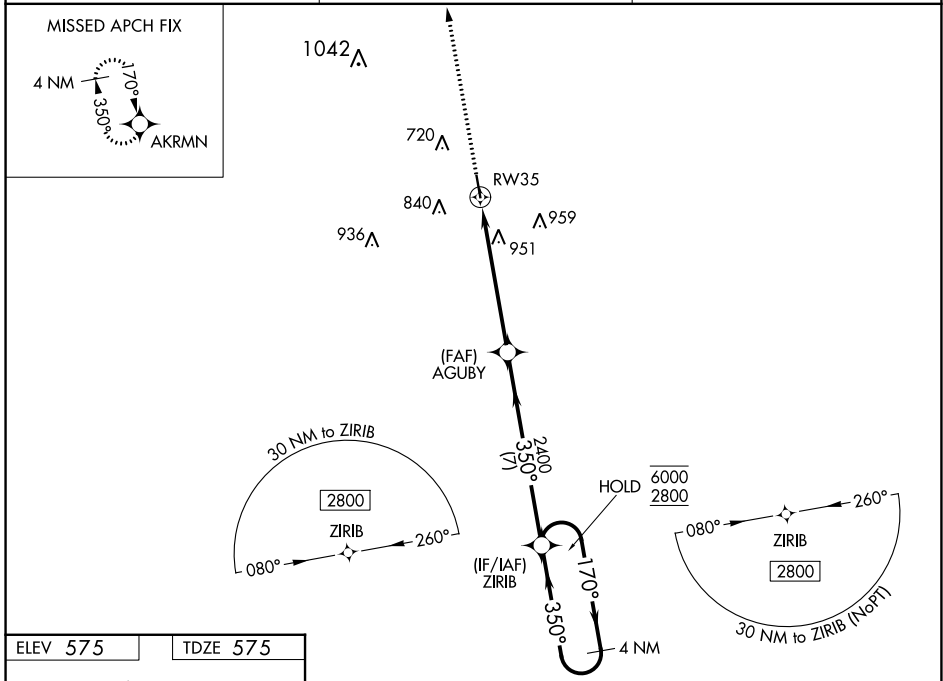


WAAS CH 53335 W35A	APP CRS 350°	Rwy Idg TDZE Apt Elev	4669 575 575
--	------------------------	-----------------------------	---

RNAV (GPS) RWY 35

LOUISVILLE/WINSTON COUNTY (LMS)

RNP APCH - GPS.		MISSED APPROACH: Climb to 2800 direct AKRMN and hold.
<p>⚠ Rwy 35 helicopter visibility reduction below 3/4 SM NA. For uncompensated Baro-VNAV systems, LNAV/VNAV NA below -16°C or above 54°C.</p>		
AWOS-3PT 118.325	MEMPHIS CENTER 132.75 263.0	UNICOM 122.7 (CTAF) 0



CATEGORY	A	B	C	D
LPV DA	859-1		284 (300-1)	
LNAV/VNAV DA	1220-1 7/8		645 (700-1 7/8)	
LNAV MDA	1220-1	645 (700-1)	1220-1 7/8	645 (700-1 7/8)
<input checked="" type="checkbox"/> CIRCLING	1220-1 645 (700-1)	1260-1 685 (700-1)	1260-2 685 (700-2)	1260-2 1/4 685 (700-2 1/4)