

|  |                        |   |
|--|------------------------|---|
| WAAS<br>CH <b>69624</b><br><b>W09A</b> | APP CRS<br><b>088°</b> | Rwy Idg <b>5000</b><br>TDZE <b>2933</b><br>Apt Elev <b>2933</b> |
|--|------------------------|---|

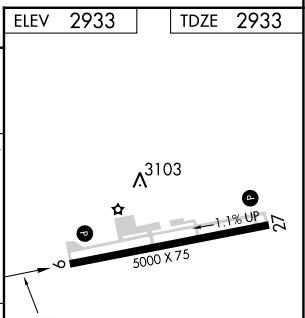
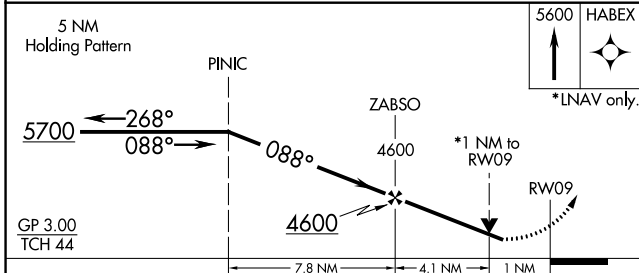
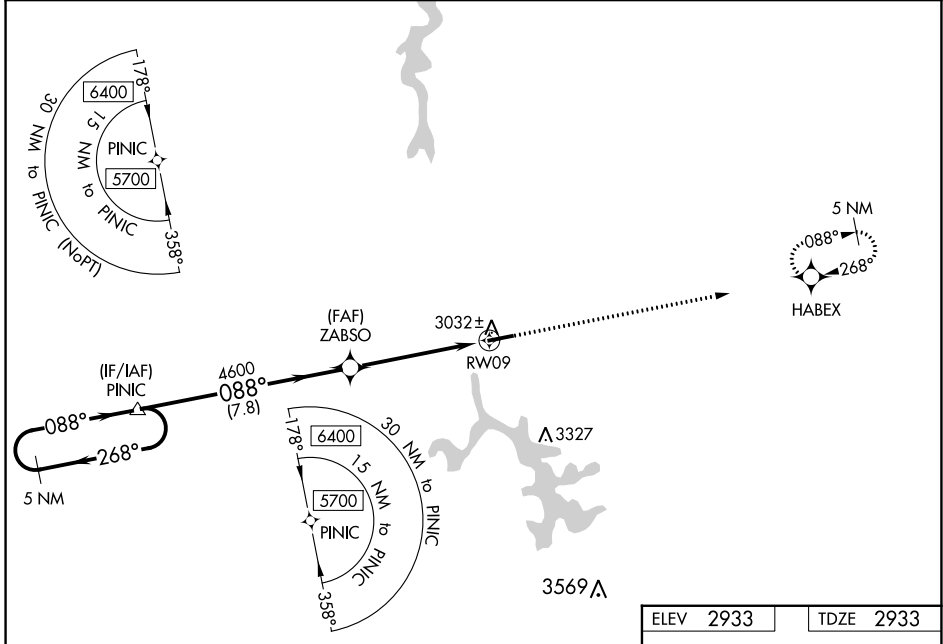
# RNAV (GPS) RWY 9

GARRETT COUNTY (2G4)

**▼** Baro-VNAV and VDP NA when using Morgantown altimeter setting. For uncompensated Baro-VNAV systems, LNAV/VNAV NA below -20° (-4°F) or above 54°C (130°F). Helicopter visibility reduction below ¾ SM NA. DME/DME RNP -0.3 NA. When local altimeter setting not received, use Morgantown altimeter setting and increase all DA and MDA 300 feet. Increase LPV and LNAV/VNAV all Cats visibility 1½ mile, LNAV Cat C visibility ¾ mile and Circling Cat C visibility 1 mile.

**▲ NA** MISSED APPROACH: Climb to 5600 direct HABEX and hold.

|                          |   |                                 |
|--------------------------|---|---------------------------------|
| AWOS-3<br><b>120.125</b> | CLARKSBURG APP CON ★<br><b>119.425 284.65</b> | UNICOM<br><b>123.0 (CTAF) 0</b> |
|--------------------------|---|---------------------------------|



| CATEGORY          | A                     | B                     | C                       | D  |
|-------------------|-----------------------|-----------------------|-------------------------|----|
| LPV DA            | 3183-¾                | 250 (300-¾)           |                         | NA |
| LNAV/VNAV DA      | 3183-¾                | 250 (300-¾)           |                         | NA |
| LNAV MDA          | 3300-1                | 367 (400-1)           |                         | NA |
| <b>C</b> CIRCLING | 3340-1<br>407 (500-1) | 3400-1<br>467 (500-1) | 3500-1½<br>567 (600-1½) | NA |

REIL Rwy 9 and 27 **0**  
MIRL Rwy 9-27 **0**

NE-3, 11 JUL 2024 to 08 AUG 2024

NE-3, 11 JUL 2024 to 08 AUG 2024