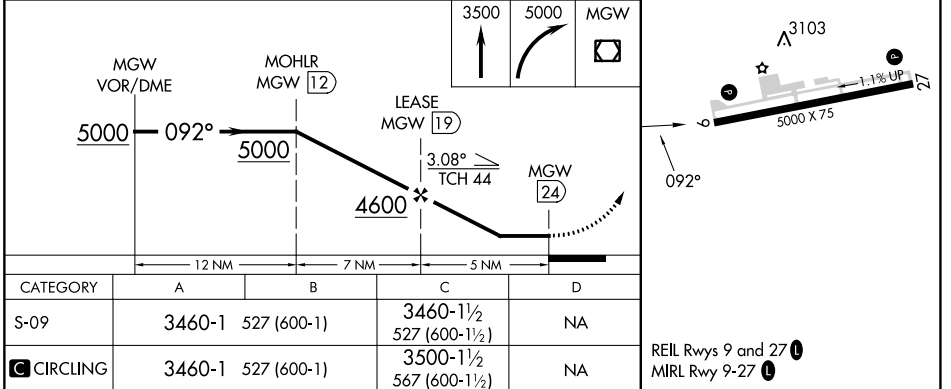
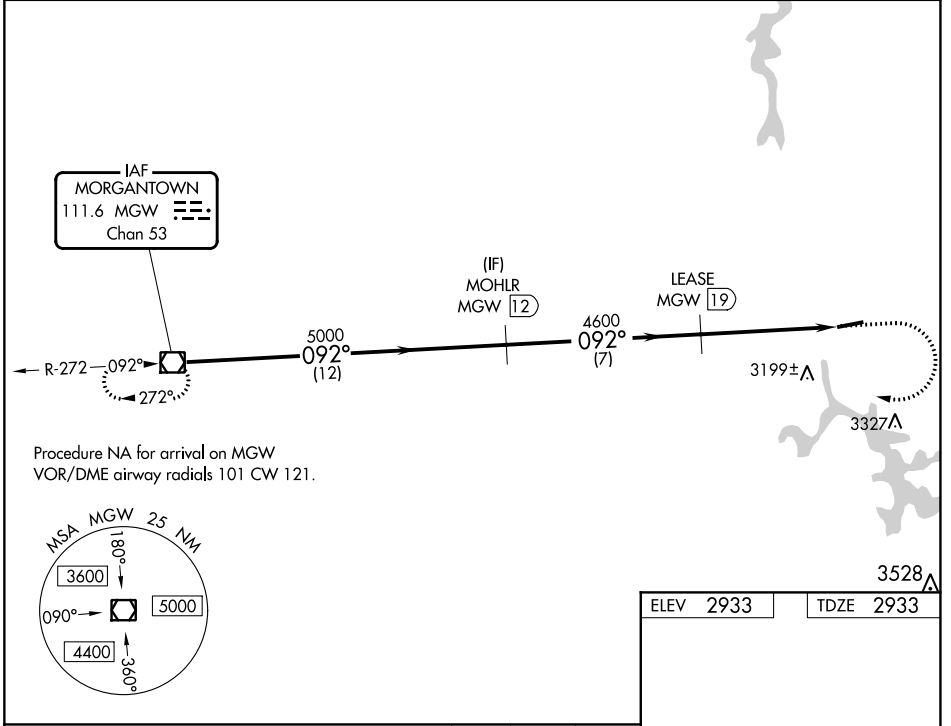


VOR/DME MGW 111.6 Chan 53	APP CRS 092°	Rwy Idg TDZE Apt Elev	5000 2933 2933
---	------------------------	-----------------------------	---

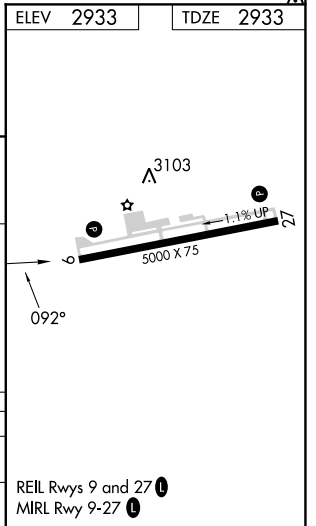
VOR RWY 9

GARRETT COUNTY (2G4)

DME required.		<p>MISSED APPROACH: Climb to 3500 then climbing right turn to 5000 direct MGW VOR/DME and hold.</p>
<p>▼ Rwy 09 helicopter visibility reduction below 3/4 SM NA. When local altimeter setting not received, use Morgantown altimeter setting and increase all MDA 300 feet; increase S-09 Cat B and Circling Cat A and B visibility 1/4 SM and S-09 and Circling Cat C visibility 1 SM.</p>		
AWOS-3 120.125	CLARKSBURG APP CON * 119.425 284.65	UNICOM 123.0 (CTAF) 0



CATEGORY	A	B	C	D
S-09	3460-1	527 (600-1)	3460-1½ 527 (600-1½)	NA
C CIRCLING	3460-1	527 (600-1)	3500-1½ 567 (600-1½)	NA



NE-3, 11 JUL 2024 to 08 AUG 2024

NE-3, 11 JUL 2024 to 08 AUG 2024