

APP CRS	Rwy Idg	N/A
<b>020°</b>	TDZE	N/A
	Apt Elev	<b>11</b>

# RNAV (GPS)-B

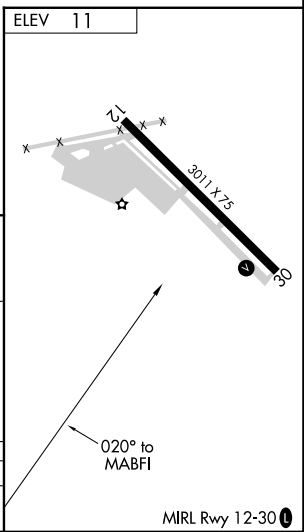
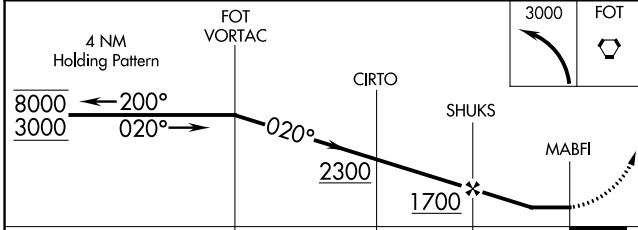
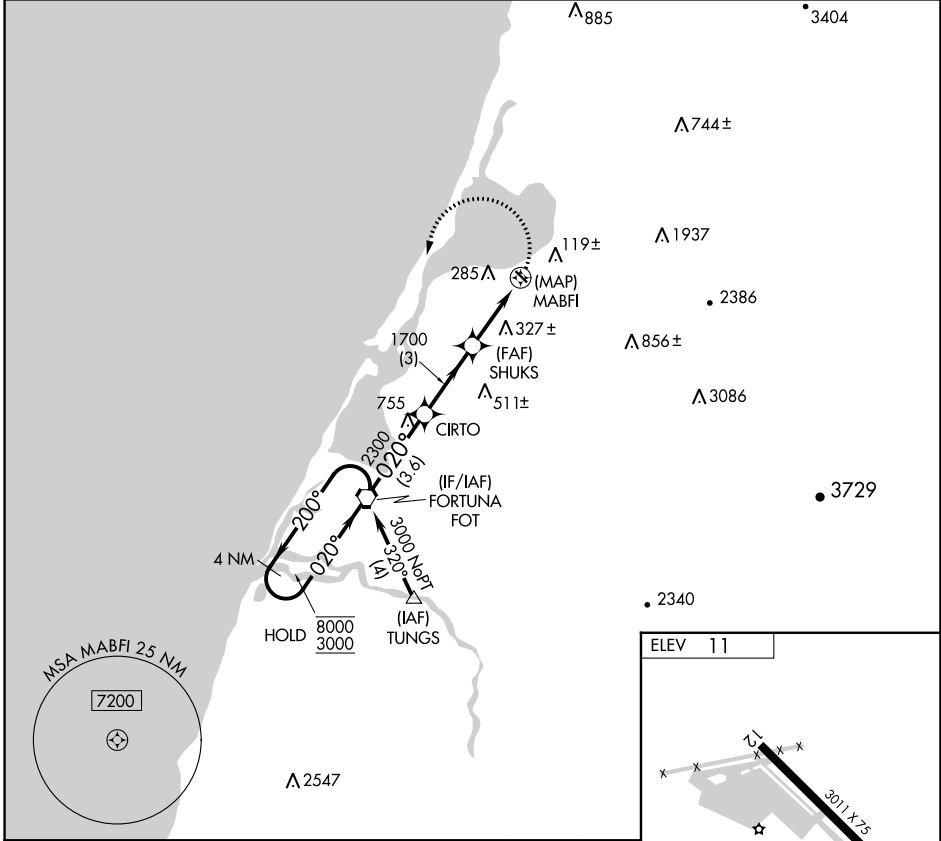
MURRAY FLD (EKA)

RNP APCH-GPS.

Procedure NA at night. Use Arcata altimeter setting when not received, use Crescent City altimeter setting and increase all MDA 100 feet. Circling Cat C NA when using Crescent City altimeter. Rwy 12, 30 helicopter visibility reduction below 1 SM NA.

MISSED APPROACH: Climbing left turn to 3000 direct FOT VORTAC and hold.

ACV ASOS <b>118.525</b>	SEATTLE CENTER <b>124.85 306.3</b>	UNICOM <b>122.7 (CTAF)</b>
----------------------------	---------------------------------------	-------------------------------



CATEGORY	A	B	C	D
CIRCLING	980-1¼ 969 (1000-1¼)	1220-1½ 1209 (1300-1½)	1640-3 1629 (1700-3)	NA

MIRL Rwy 12-30

SW-2, 11 JUL 2024 to 08 AUG 2024

SW-2, 11 JUL 2024 to 08 AUG 2024