

LINDZ ONE DEPARTURE
(LINDZ1.LINDZ) 16MAY24

ASPEN-PITKIN COUNTY/SARDY FLD (ASE)
ASPEN, COLORADO

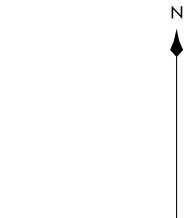
ASPEN DEP CON *
123.8 288.3
DENVER CENTER
119.85 363.15
ATIS
120.4
CLINC DEL
123.75
GND CON
121.9
ASPEN TOWER *
118.85 (CTAF) 288.3
UNICOM
122.95

**TOP ALTITUDE:
16000**

(LINDZ1.LINDZ) 24137
LINDZ ONE DEPARTURE

AL-58889 (FAA)

ASPEN-PITKIN COUNTY/SARDY FLD (ASE)
ASPEN, COLORADO



GRAND JUNCTION
112.4 JNC
Chan 71

MEEKER
115.2 EKR
Chan 99

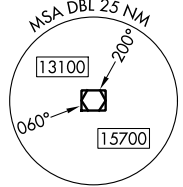
RIFLE
113.35 RIL
Chan 80(Y)

SNOW
109.2 SXW
Chan 29

RED TABLE
113.0 DBL
Chan 77

KREMMLING
113.8 RLG
Chan 85

TAKEOFF MINIMUMS
Rwy 15: NA - Terrain.
Rwy 33: 400-1 with minimum climb of 465' per NM to 10600.

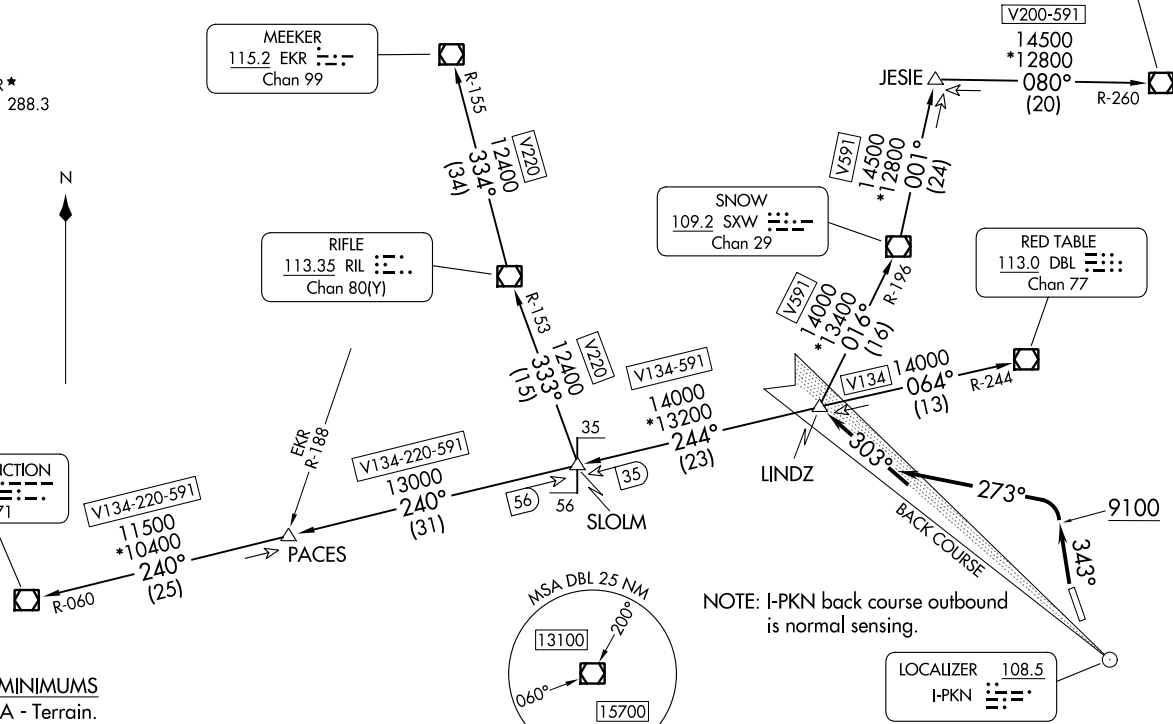


NOTE: I-PKN back course outbound is normal sensing.

LOCALIZER 108.5
I-PKN

NOTE: Chart not to scale.

(CONTINUED ON FOLLOWING PAGE)





DEPARTURE ROUTE DESCRIPTION

TAKEOFF RUNWAY 33: Climb heading 343° to 9100, then climbing left turn to 16000 on heading 273° to intercept I-PKN NW course outbound to LINDZ INT/DBL 13 DME. Then on assigned transition, maintain 16000, expect clearance to filed altitude 10 minutes after departure.

LOST COMMUNICATIONS: If no transmissions are received for one minute after departure or by DBL VOR/DME 9 DME, turn left on heading 273° to intercept and proceed via the I-PKN NW course (outbound) to LINDZ INT/DBL VOR/DME 13 DME, then via assigned route/transition.

GRAND JUNCTION TRANSITION (LINDZ1.JNC): From over LINDZ on DBL R-244 to SLOLM, then on JNC R-060 to JNC VOR/DME.

KREMMLING TRANSITION (LINDZ1.RLG): From over LINDZ on SXW R-196 to SXW VOR/DME, then on SXW R-001 to JESIE, then on RLG R-260 to RLG VOR/DME.

MEEKER TRANSITION (LINDZ1.EKR): From over LINDZ on DBL R-244 to SLOLM, then on RIL R-153 to RIL VOR/DME, then on RIL R-334 and EKR R-155 to EKR VOR/DME.

RED TABLE TRANSITION (LINDZ1.DBL): From over LINDZ on DBL R-244 to DBL VOR/DME.

RIFLE TRANSITION (LINDZ1.RIL): From over LINDZ on DBL R-244 to SLOLM, then on RIL R-153 to RIL VOR/DME.

SW-1, 11 JUL 2024 to 08 AUG 2024

SW-1, 11 JUL 2024 to 08 AUG 2024