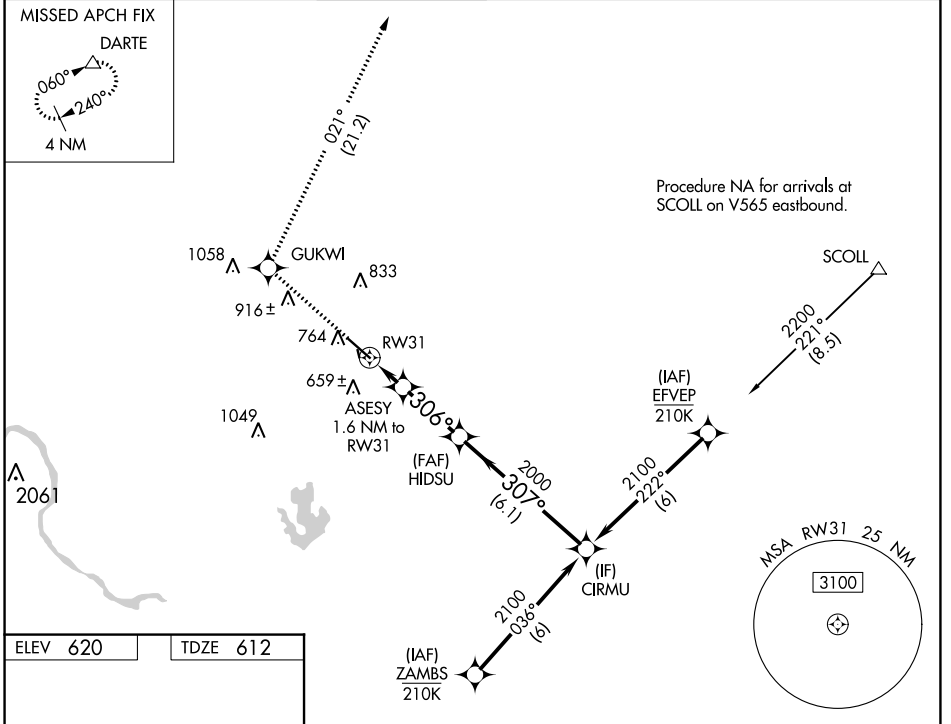


WAAS CH 45916 W31A	APP CRS 306°	Rwy Idg 6025 TDZE 612 Apt Elev 620
--	------------------------	---

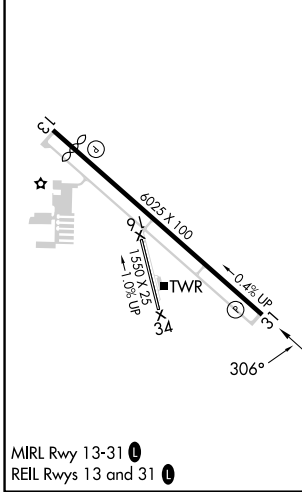
RNAV (GPS) RWY 31

AUSTIN EXEC (EDC)

RNP APCH - GPS.				MISSED APPROACH: Climb to 3500 direct GUKWI and on track 021° to DARTE and hold.	
AWOS-3 118.825	AUSTIN APP CON 127.225 317.65	EXECUTIVE TOWER★ 120.3 (CTAF) 0	GND CON 119.45	CLNC DEL 126.025 (When twr closed)	UNICOM 122.975



ELEV 620	TDZE 612
----------	----------



3500	GUKWI	tr 021°	DARTE	CIRMU
	ASESY 1.6 NM to RW31	HIDSU 2000		2100
	0.9 NM to RW31			
				GP 3.00° TCH 40
	0.9	0.7	2.7 NM	6.1 NM
CATEGORY	A	B	C	D
LPV DA		812-3/4	200 (200-3/4)	
LNAV/VNAV DA		909-7/8	297 (300-7/8)	
LNAV MDA	920-1	308 (300-1)	920-7/8	308 (300-7/8)
CIRCLING	1140-1 520 (600-1)	1160-1 540 (600-1)	1280-1 3/4 660 (700-1 3/4)	1280-2 660 (700-2)

SC-3, 11 JUL 2024 to 08 AUG 2024

SC-3, 11 JUL 2024 to 08 AUG 2024