

APP CRS	Rwy Idg	<b>5136</b>
<b>064°</b>	TDZE	<b>83</b>
	Apt Elev	<b>99</b>

# RNAV (GPS) RWY 6

BREWTON MUNI (12J)

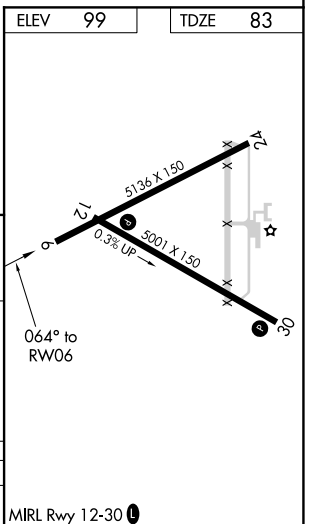
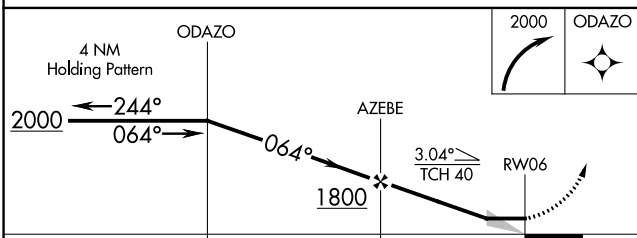
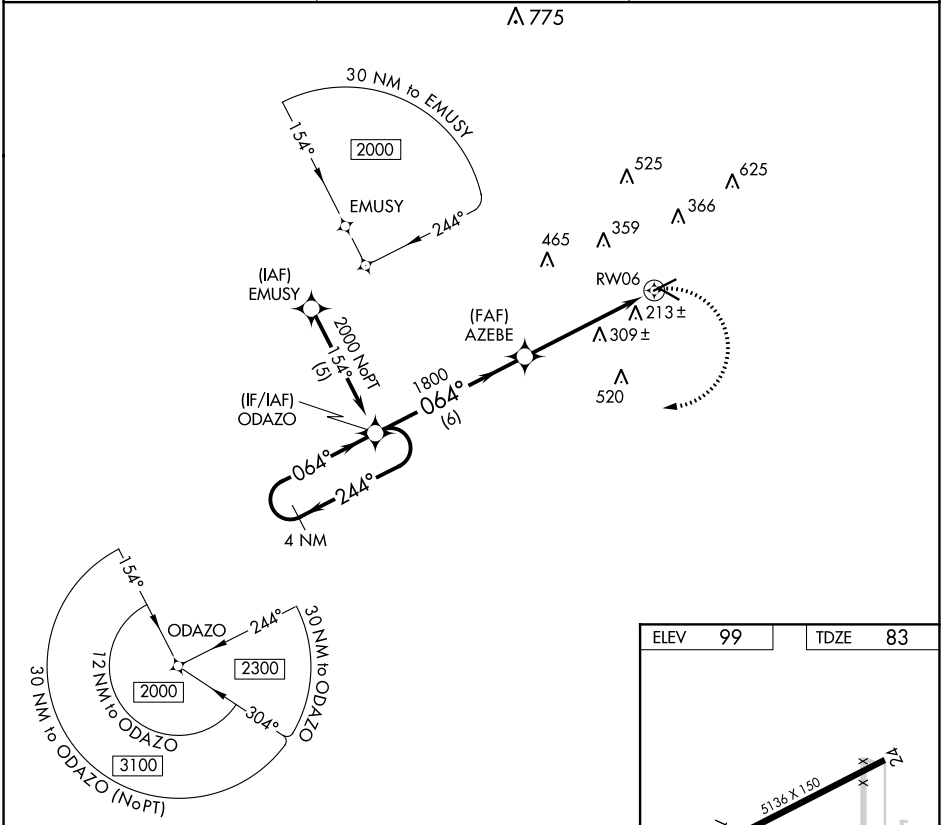
RNP APCH.

**▽** When local altimeter setting not received, use Pensacola altimeter setting and increase all MDA 100 feet; increase LNAV Cats C and D visibility  $\frac{1}{4}$  SM. Procedure NA at night.

**▲ NA**

MISSED APPROACH: Climbing right turn to 2000 direct ODAZO and hold.

AWOS-3PT <b>119.325</b>	PENSACOLA APP CON <b>127.35 291.625</b>	UNICOM <b>122.725 (CTAF) 0</b>
----------------------------	--	-----------------------------------



CATEGORY	A	B	C	D
LNAV MDA	560-1	477 (500-1)	560-1 $\frac{3}{8}$	477 (500-1 $\frac{3}{8}$ )

SE-4, 11 JUL 2024 to 08 AUG 2024

SE-4, 11 JUL 2024 to 08 AUG 2024