

WAAS CH 93737 W05A	APP CRS 050°	Rwy Idg TDZE Apt Elev	6114 1015 1032
--	------------------------	-----------------------------	---

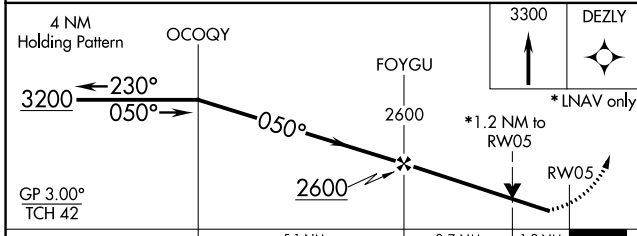
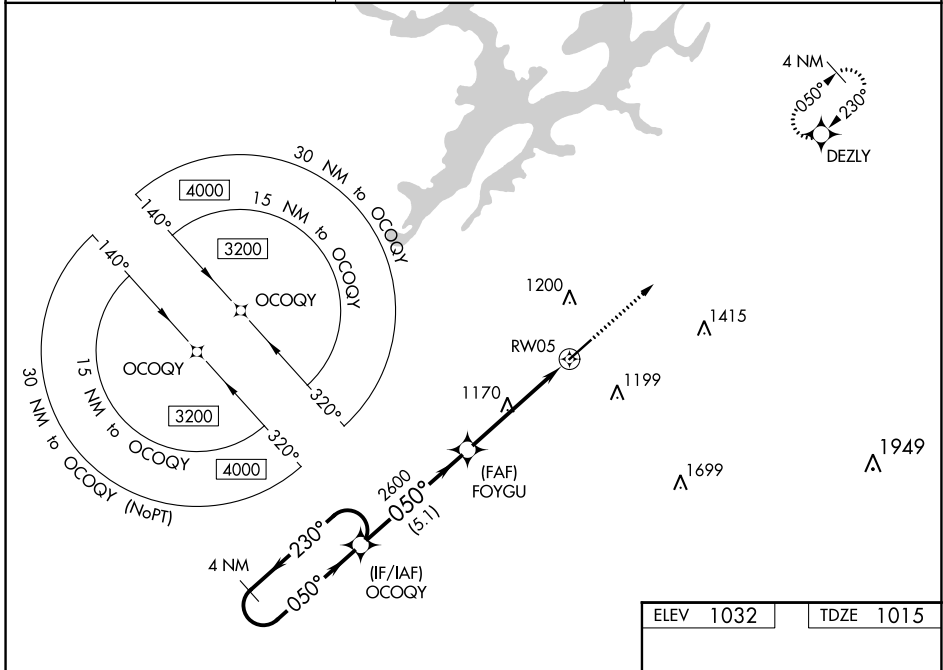
RNAV (GPS) RWY 5

ALBARTVILLE RGNL/THOMAS J BRUMLIK FLD (8A0)

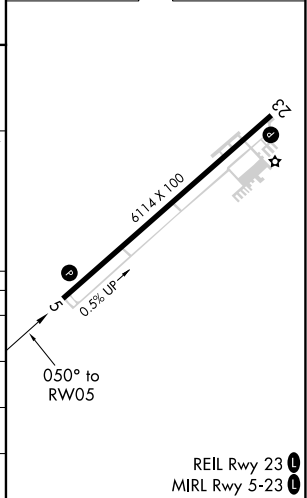
⚠ DME/DME RNP-0.3 NA. When local altimeter setting not received, use Huntsville Intl-Carl T Jones Fld altimeter setting and increase all DA 139 feet and all MDA 140 feet; increase LPV all Cats, LNAV/VNAV all Cats and LNAV Cats C and D visibility ½ mile. Increase Circling Cat C visibility ¼ mile and Cat D ½ mile. For uncompensated Baro-VNAV systems, LNAV/VNAV NA below -17°C (2°F) or above 54°C (130°F). Baro-VNAV and VDP NA when using Huntsville Intl-Carl T Jones Fld altimeter setting. Helicopter visibility reduction below ¾ SM NA.

⚠ MISSED APPROACH: Climb to 3300 direct DEZLY and hold.

AWOS-3PT 119.575	BIRMINGHAM APP CON 125.45 279.65	UNICOM 123.0 (CTAF) 0
----------------------------	--	--



ELEV 1032	TDZE 1015
-----------	-----------



CATEGORY	A	B	C	D
LPV DA	1265-7/8 250 (300-7/8)			
LNAV/VNAV DA	1332-1 1/8 317 (300-1 1/8)			
LNAV MDA	1420-1 405 (400-1)		1420-1 1/8 405 (400-1 1/8)	
C CIRCLING	1480-1 448 (500-1)	1500-1 468 (500-1)	1500-1 1/2 468 (500-1 1/2)	1680-2 648 (700-2)

REIL Rwy 23 **0**
MIRL Rwy 5-23 **0**

SE-4, 11 JUL 2024 to 08 AUG 2024

SE-4, 11 JUL 2024 to 08 AUG 2024