

WAAS CH 93623 W31A	APP CRS 316°	Rwy Idg 4400 TDZE 660 Apt Elev 660
--	------------------------	---

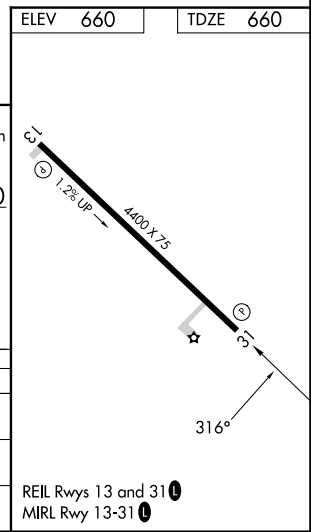
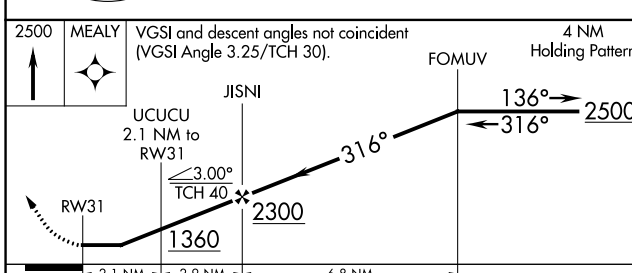
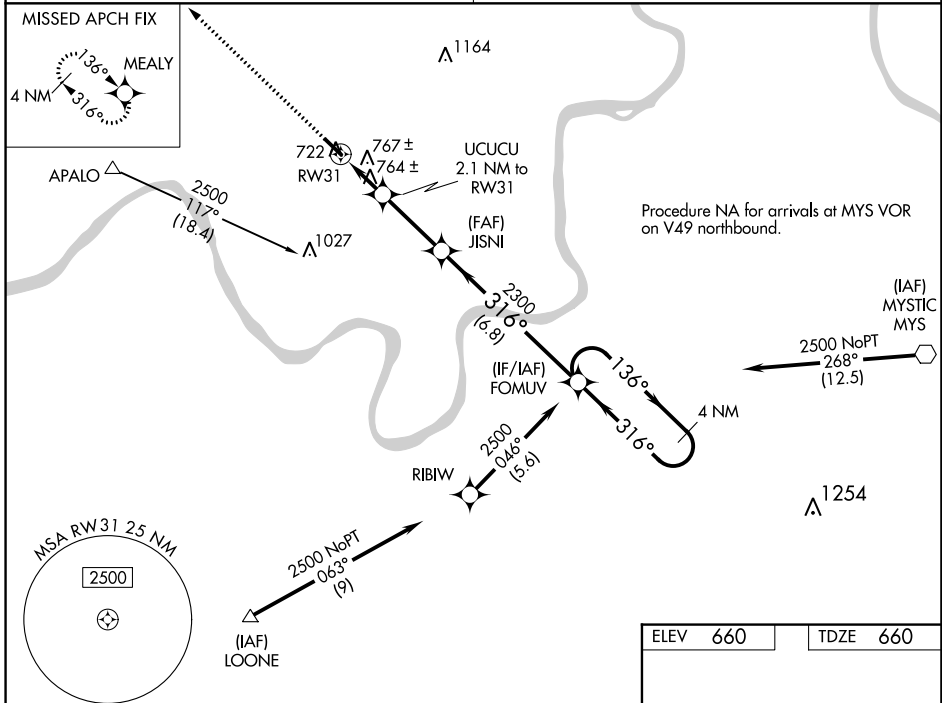
RNAV (GPS) RWY 31

PERRY COUNTY MUNI (TEL)

NA When VGSI inop, Circling Rwy 13 NA at night. When VGSI inop, Straight-in/Circling Rwy 31 procedure NA at night. DME/DME RNP-0.3 NA. Visibility reduction by helicopters NA. Obtain local altimeter setting on CTAF; when not received, use Huntingburg altimeter setting and increase all MDA 80 feet and increase LP and LNAV Cat C visibility 1/4 mile.

MISSED APPROACH: Climb to 2500 direct MEALY and hold.

EVANSVILLE APP CON * 124.025 290.9	UNICOM 122.7 (CTAF) 0
--	---------------------------------



CATEGORY	A	B	C	D
LP MDA		1020-1 360 (400-1)		NA
LNAV MDA		1020-1 360 (400-1)		NA
CIRCLING	1080-1 420 (500-1)	1120-1 460 (500-1)	1120-1 1/2 460 (500-1 1/2)	NA

EC-2, 11 JUL 2024 to 08 AUG 2024

EC-2, 11 JUL 2024 to 08 AUG 2024