

# FEALX TWO DEPARTURE (RNAV)

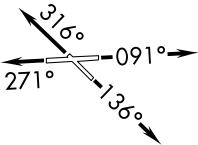
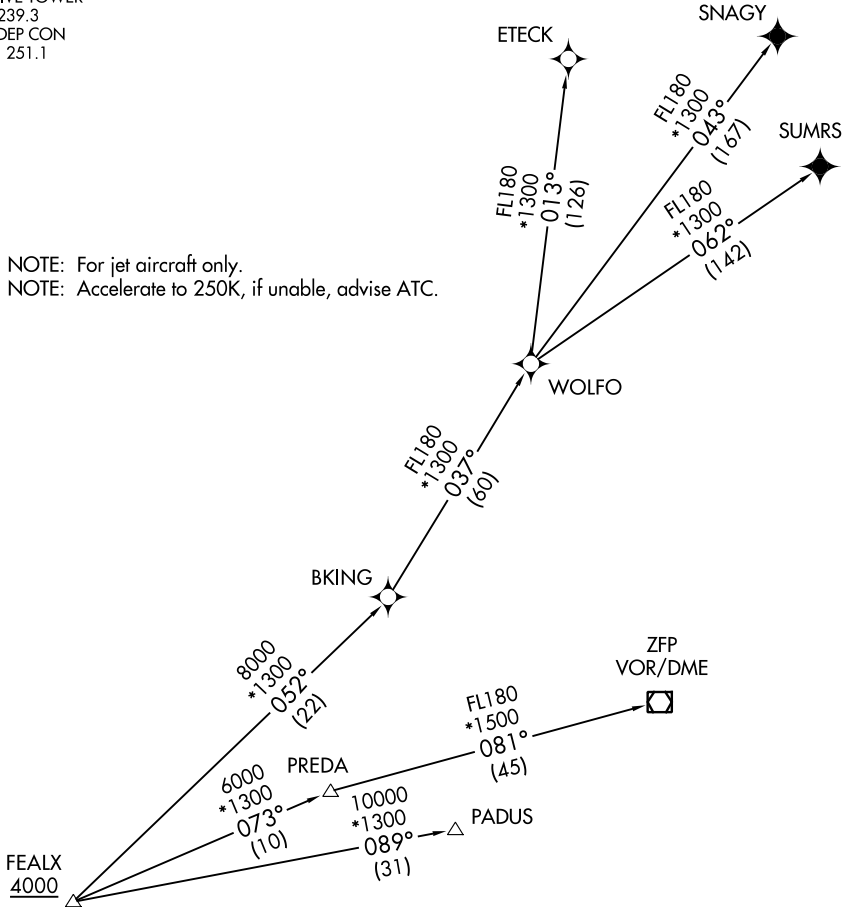
ATIS  
119.85  
CLINC DEL  
127.95  
GND CON  
121.75  
EXECUTIVE TOWER  
120.9 239.3  
MIAMI DEP CON  
126.05 251.1

**TOP ALTITUDE:  
ASSIGNED BY ATC**

RNAV 1 - DME/DME/IRU or GPS.  
From WOLFO to SNAGY, SUMRS - GPS.

RADAR required.

NOTE: For jet aircraft only.  
NOTE: Accelerate to 250K, if unable, advise ATC.



TAKEOFF MINIMUMS

Rwys 9, 13, 31: Standard

Rwy 27: Standard with minimum climb of 500' per NM to 520.

(NARRATIVE ON FOLLOWING PAGE)

NOTE: Chart not to scale.

SE-3, 11 JUL 2024 to 08 AUG 2024

SE-3, 11 JUL 2024 to 08 AUG 2024

# FEALX TWO DEPARTURE (RNAV)

(FEALX2.FEALX) 19MAY22

# FEALX TWO DEPARTURE (RNAV)



## DEPARTURE ROUTE DESCRIPTION

TAKEOFF RUNWAY 9: Climb on heading 091° or as assigned by ATC for vectors to cross FEALX at or above 4000, thence. . .

TAKEOFF RUNWAY 13: Climb on heading 136° or as assigned by ATC for vectors to cross FEALX at or above 4000, thence. . .

TAKEOFF RUNWAY 27: Climb on heading 271° or as assigned by ATC for vectors to cross FEALX at or above 4000, thence. . .

TAKEOFF RUNWAY 31: Climb on heading 316° or as assigned by ATC for vectors to cross FEALX at or above 4000, thence. . .

. . .(transition). Maintain ATC assigned altitude. Expect clearance to filed altitude ten minutes after departure.

ETECK TRANSITION (FEALX2.ETECK)

FREEPORT TRANSITION (FEALX2.ZFP)

PADUS TRANSITION (FEALX2.PADUS)

SNAGY TRANSITION (FEALX2.SNAGY)

SUMRS TRANSITION (FEALX2.SUMRS)

WOLFO TRANSITION (FEALX2.WOLFO)

SE-3, 11 JUL 2024 to 08 AUG 2024

SE-3, 11 JUL 2024 to 08 AUG 2024