

WAAS CH 50319 W27A	APP CRS 271°	Rwy Idg TDZE 13 Apt Elev 13	6002
---------------------------------	------------------------	---	-------------

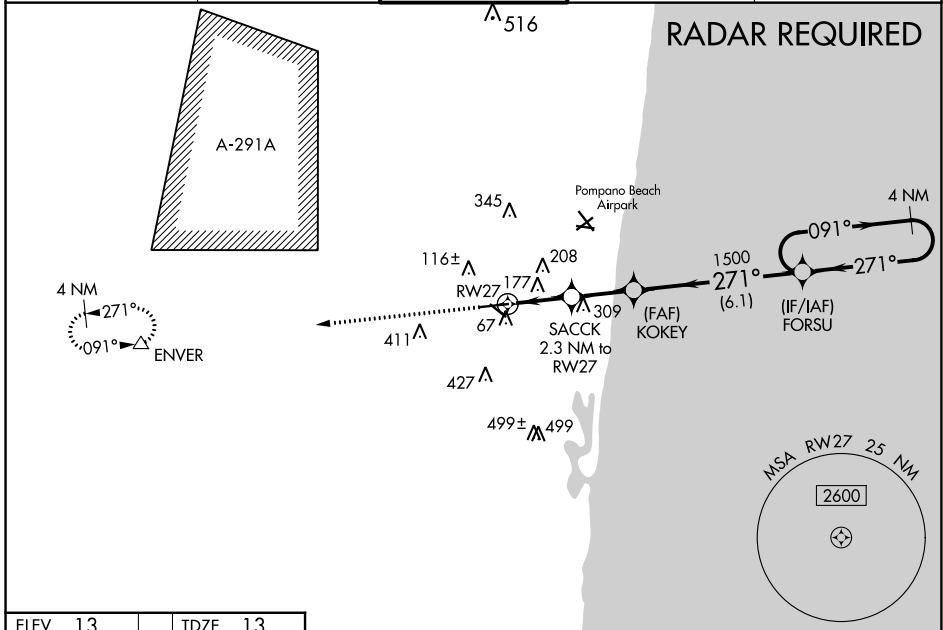
RNAV (GPS) RWY 27

FORT LAUDERDALE EXEC (FXE)

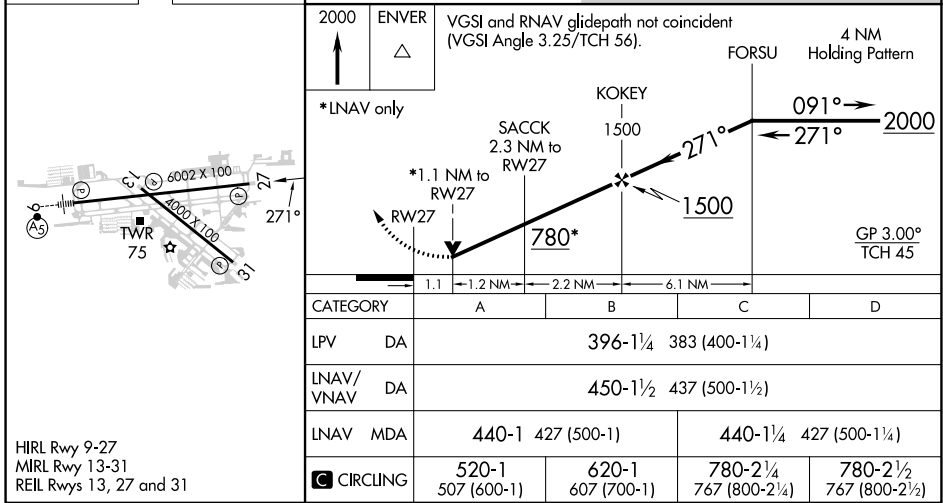
⚠ For uncompensated Baro-VNAV systems, LNAV/VNAV NA below 4°C (40°F) or above 54°C (130°F).
⚠ DME/DME RNP-0.3 NA. When local altimeter setting not received, use Fort Lauderdale/Hollywood Intl altimeter setting and increase LPV DA to 414; LNAV/VNAV DA to 468. Increase all MDA 20 feet and increase LPV all Cats and LNAV Cats C/D visibility to 1 $\frac{3}{8}$. Baro-VNAV and VDP NA when using Fort Lauderdale/Hollywood Intl altimeter setting. Helicopter visibility reduction below $\frac{3}{4}$ SM NA.

MISSED APPROACH: Climb to 2000 direct ENVER and hold.

ATIS 119.85	MIAMI APP CON 119.7 306.3	EXECUTIVE TOWER 120.9 239.3	GND CON 121.75	CLNC DEL 127.95
-----------------------	-------------------------------------	---------------------------------------	--------------------------	---------------------------



ELEV 13	TDZE 13
----------------	----------------



2000	ENVER	VGSi and RNAV glidepath not coincident (VGSi Angle 3.25/TCH 56).	4 NM Holding Pattern
*LNAV only			
	RW27	SACCK 2.3 NM to RW27	KOKEY 1500
		*1.1 NM to RW27	FORSU 2000
		780*	GP 3.00° TCH 45
	1.1	1.2 NM	2.2 NM
			6.1 NM
CATEGORY	A	B	C
LPV DA	396-1 $\frac{1}{4}$ 383 (400-1 $\frac{1}{4}$)		
LNAV/VNAV DA	450-1 $\frac{1}{2}$ 437 (500-1 $\frac{1}{2}$)		
LNAV MDA	440-1	427 (500-1)	440-1 $\frac{1}{4}$ 427 (500-1 $\frac{1}{4}$)
C CIRCLING	520-1 507 (600-1)	620-1 607 (700-1)	780-2 $\frac{1}{4}$ 767 (800-2 $\frac{1}{4}$)
			780-2 $\frac{1}{2}$ 767 (800-2 $\frac{1}{2}$)

SE-3, 11 JUL 2024 to 08 AUG 2024

SE-3, 11 JUL 2024 to 08 AUG 2024