

VOR CGG 109.8	APP CRS 127°	Rwy Idg 5005
		TDZE 1154
		Apt Elev 1158

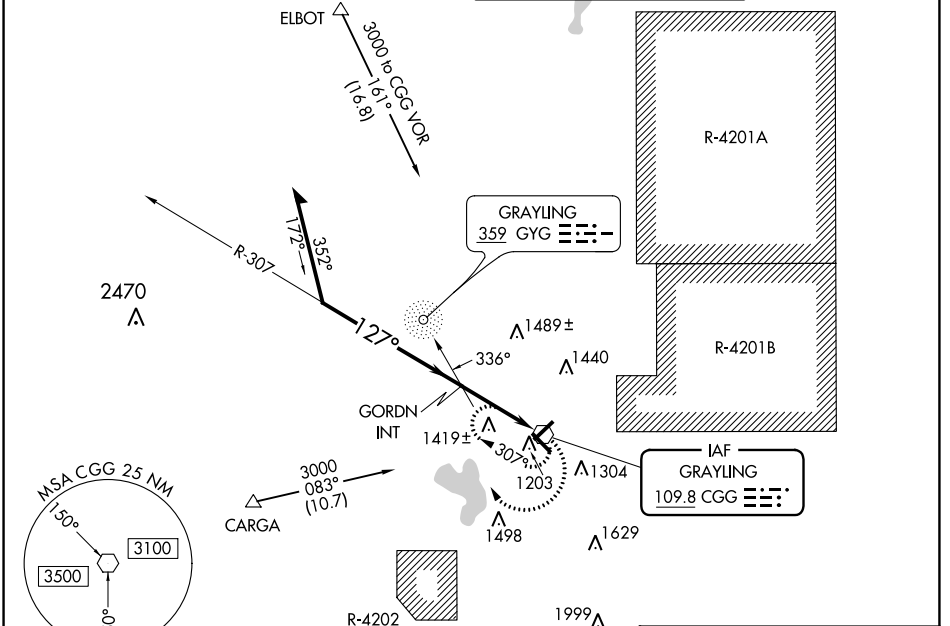
VOR RWY 14

GRAYLING AAF (GOV)

▼ Rwy 14 helicopter visibility reduction below ¼ SM NA. Circling Rwy 5, 23, 32 NA at night.
▲ NA When local altimeter setting not received, use Houghton Lake altimeter setting and increase all MDAs 60 feet and visibility S-14 and Circling Cat B/C/D ½ SM and GORDN fix minimums: S-14 Cat C and Circling Cat D ¼ SM.

MISSED APPROACH:
 Climbing right turn to 3500 in CGG VOR holding pattern.

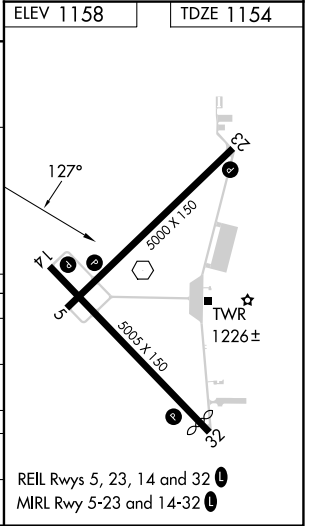
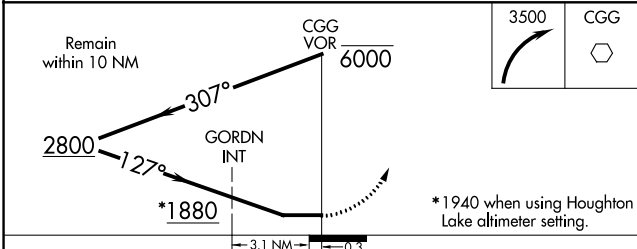
ATIS 119.075	MINNEAPOLIS CENTER 125.475 269.45	GRAYLING TOWER ★ 126.2 (CTAF) 0	GND CON 121.9
------------------------	---	---	-------------------------



EC-1, 11 JUL 2024 to 08 AUG 2024

EC-1, 11 JUL 2024 to 08 AUG 2024

ELEV 1158	TDZE 1154
-----------	-----------



CATEGORY	A	B	C	D
S-14	1880-1 726 (800-1)		1880-2 726 (800-2)	1880-2¼ 726 (800-2¼)
CIRCLING	1880-1 722 (800-1)		1880-2 722 (800-2)	1960-2½ 802 (900-2½)
GORDN FIX MINIMUMS				
S-14	1720-1 566 (600-1)		1720-1⅝ 566 (600-1⅝)	1720-1¾ 566 (600-1¾)
CIRCLING	1720-1 562 (600-1)		1760-1¾ 602 (700-1¾)	1960-2½ 802 (900-2½)

REIL Rws 5, 23, 14 and 32
 MIRL Rwy 5-23 and 14-32