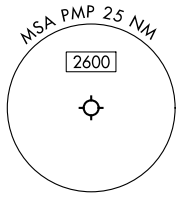
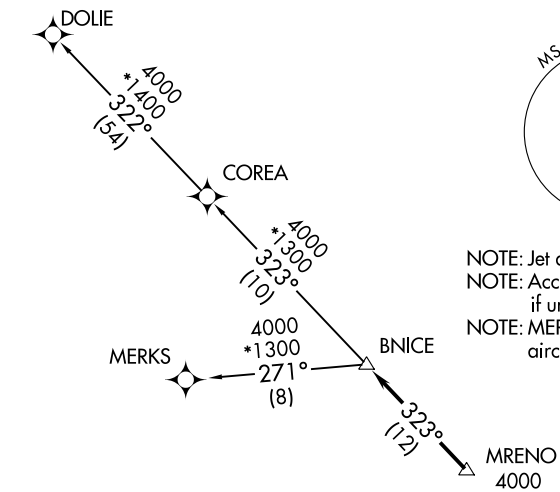


# BNICE TWO DEPARTURE (RNAV)

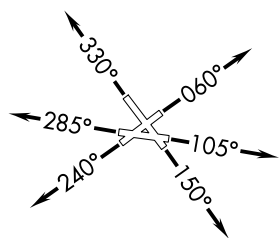
RNAV 1 - DME/DME/IRU or GPS.  
RADAR required for non-GPS equipped aircraft.

**TOP ALTITUDE:  
ASSIGNED BY ATC**

MIAMI DEP CON 126.05 251.1  
ATIS 120.55  
GND CON 121.9  
POMPANO BEACH TOWER ★ 125.4 (CTAF)



NOTE: Jet aircraft only.  
NOTE: Accelerate to 250K until leaving 10000, if unable, advise ATC.  
NOTE: MERKS Transition ATC assigned only except aircraft landing: MKY, RSW, APF, PGD, FMY.



**TAKEOFF MINIMUMS**  
Rwys 6, 10, 15, 24, 28, 33: Standard with minimum climb of 500'/NM to 520.

NOTE: Chart not to scale.

## DEPARTURE ROUTE DESCRIPTION

- TAKEOFF RUNWAY 6: Climb on heading 060° or as assigned by ATC, then...
- TAKEOFF RUNWAY 10: Climb on heading 105° or as assigned by ATC, then...
- TAKEOFF RUNWAY 15: Climb on heading 150° or as assigned by ATC, then...
- TAKEOFF RUNWAY 24: Climb on heading 240° or as assigned by ATC, then...
- TAKEOFF RUNWAY 28: Climb on heading 285° or as assigned by ATC, then...
- TAKEOFF RUNWAY 33: Climb on heading 330° or as assigned by ATC, then...

... for RADAR vectors to cross MRENO at or above 4000, then on track 323° to BNICE, then on assigned transition, maintain ATC assigned altitude, expect clearance to filed altitude within 10 minutes after departure.

- COREA TRANSITION (BNICE2.COREA)
- DOLIE TRANSITION (BNICE2.DOLIE)
- MERKS TRANSITION (BNICE2.MERKS)

SE-3, 11 JUL 2024 to 08 AUG 2024

SE-3, 11 JUL 2024 to 08 AUG 2024