

MIAMI DEP CON  
126.05 251.1  
ATIS  
120.55  
GND CON  
121.9  
POMPANO BEACH TOWER \*  
125.4 (CTAF)

RNAV1 - DME/DME/IRU or GPS.  
From SLIPT to MAXIM: RNAV 1- GPS.  
From SLIPT to CANOA: RNAV 1- GPS.  
RADAR required.

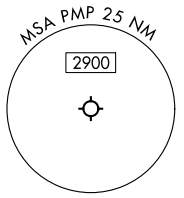
**TOP ALTITUDE:  
ASSIGNED BY ATC**



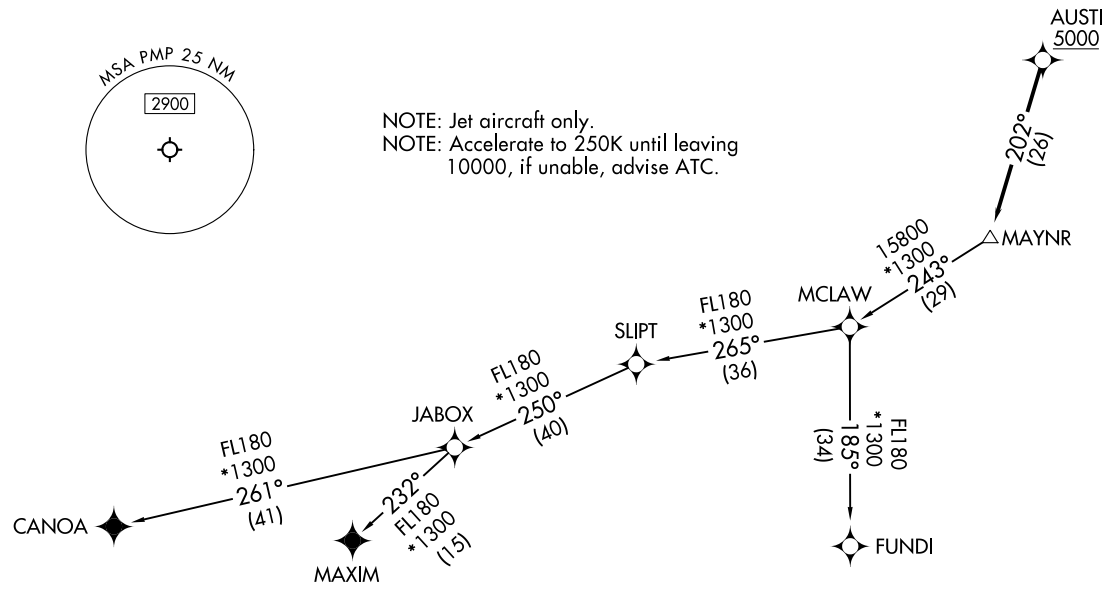
MAYNR TWO DEPARTURE (RNAV)  
(MAYNR2, MAYNR) 21MAR24

(MAYNR2, MAYNR) 24081  
MAYNR TWO DEPARTURE (RNAV)  
AL-5972 (FAA)

**TAKEOFF MINIMUMS**  
Rwys 6, 10, 15, 24, 28, 33: Standard with minimum climb of 500'/NM to 520.



NOTE: Jet aircraft only.  
NOTE: Accelerate to 250K until leaving 10000, if unable, advise ATC.



POMPANO BEACH AIRPARK (PMP)  
POMPANO BEACH AIRPARK (PMP)

POMPANO BEACH AIRPARK (PMP)  
POMPANO BEACH AIRPARK (PMP)

NOTE: Chart not to scale.

(CONTINUED ON FOLLOWING PAGE)

# MAYNR TWO DEPARTURE (RNAV)



## DEPARTURE ROUTE DESCRIPTION

TAKEOFF RUNWAYS 6, 10, 15, 24, 28, 33: Climb on heading assigned by ATC for vectors to cross AUSTI at or above 5000, thence. . . .

. . . .on track 202° to MAYNR, then on assigned transition, maintain ATC assigned altitude. Expect clearance to filed altitude within 10 minutes after departure.

CANOA TRANSITION (MAYNR2.CANOA)

FUNDI TRANSITION (MAYNR2.FUNDI)

MAXIM TRANSITION (MAYNR2.MAXIM)

SE-3, 11 JUL 2024 to 08 AUG 2024

SE-3, 11 JUL 2024 to 08 AUG 2024