

23166

CAMP PENDLETON MCAS (MUNN FLD) (KNFG)

QUNTN ONE DEPARTURE (OBSTACLE) (QUNTN1•OCN)

OCEANSIDE, CALIFORNIA

ATIS ★ 285.45
 CLNC DEL
 134.675 271.6
 GND CON
 134.675 360.2
 TOWER ★
 128.775 340.2
 SOCAL DEP CON
 127.3 323.0

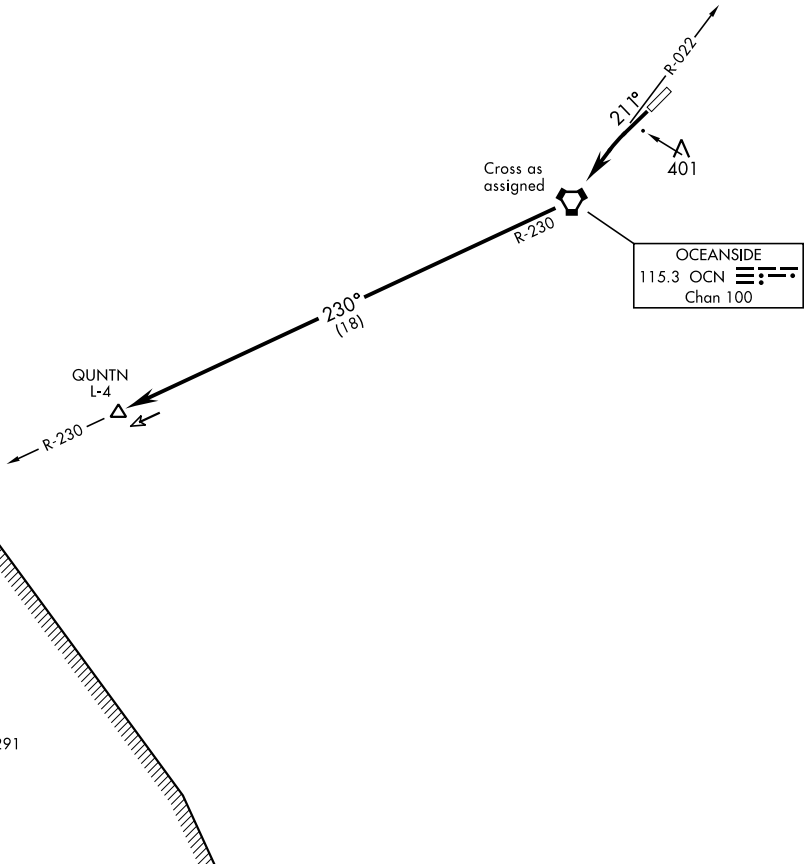
AL-5985 [USN]

Rwy	Knots	60	120	180	240	300	360
21	V/V(fpm)	482	964	1446	1928	2410	2892

Minimum Climb Rate to 900

NOT FOR CIVIL USE

3169



OCEANSIDE
 115.3 OCN
 Chan 100

SW-3, 11 JUL 2024 to 08 AUG 2024

SW-3, 11 JUL 2024 to 08 AUG 2024



DEPARTURE ROUTE DESCRIPTION

TAKEOFF RWY 21: Climb on heading 211° to intercept OCN VORTAC R-022 to OCN. Cross OCN at assigned altitude, then direct QUNTN.

QUNTN ONE DEPARTURE (OBSTACLE) (QUNTN1•OCN)

OCEANSIDE, CALIFORNIA

Orig 15JUN23

CAMP PENDLETON MCAS (MUNN FLD) (KNFG)