

OCEANSIDE, CALIFORNIA

# RNAV (GPS) RWY 21

WAAS CH <b>91083</b> <b>W21A</b>	APCH CRS <b>211°</b>	Rwy ldg TDZE <b>6005</b> Arprt Elev <b>78</b>
-------------------------------------	----------------------	--

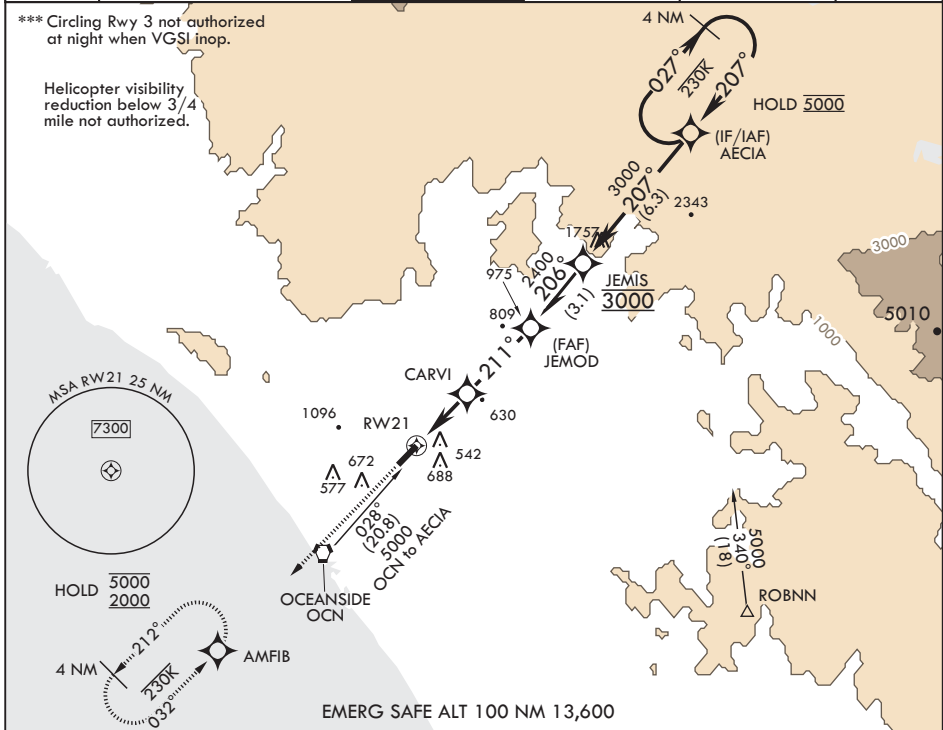
- (USN) CAMP PENDLETON MCAS (MUNN FLD) (KNFG)

RNP APCH. DME/DME RNP-0.3 N/A

**V** \* When ALS inop, increase vis to 1 mile.  
\*\* When ALS inop, increase CAT A vis to 1 mile, CAT B vis to 1 1/4 miles, CAT CD vis to 2 1/2 miles.

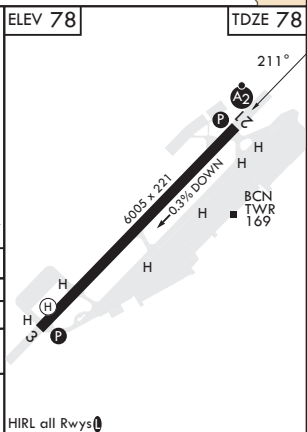
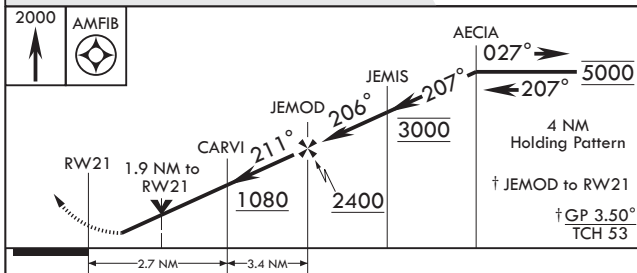
**SALS** MISSED APPROACH: Climb to 2000 direct AMFIB and hold.

ATIS* <b>285.45</b>	SOCAL APP CON/DEP CON <b>127.3 323.0</b>	TOWER* <b>128.775</b> <b>340.2</b>	GND CON <b>134.675 360.2</b>	CLNC DEL <b>134.675 271.6</b>	ASR/PAR
---------------------	--	------------------------------------	------------------------------	-------------------------------	---------



SW-3, 11 JUL 2024 to 08 AUG 2024

SW-3, 11 JUL 2024 to 08 AUG 2024



CATEGORY	A	B	C	D
LPV DA*	449-3/4 371 (400-3/4)			
LNAV MDA**	840-3/4 762 (800-3/4)	840-1 762 (800-1)	840-2	762 (800-2)
<b>C</b> CIRCLING***	1000-1 1/4 922 (1000-1 1/4)	1260-1 1/2 1182 (1200-1 1/2)	1500-3	1422 (1500-3)

OCEANSIDE, CALIFORNIA

33°18'N - 117°21'W CAMP PENDLETON MCAS (MUNN FLD) (KNFG)

Amdt 5 21APR22

# RNAV (GPS) RWY 21