

OCEANSIDE, CALIFORNIA

# VOR/DME or TACAN Y RWY 21

VORTAC OCN <b>115.3</b> Chan <b>100</b>	APCH CRS <b>206°</b>	Rwy Idg TDZE Arprt Elev <b>6005</b> <b>78</b> <b>78</b>
---	-------------------------	--

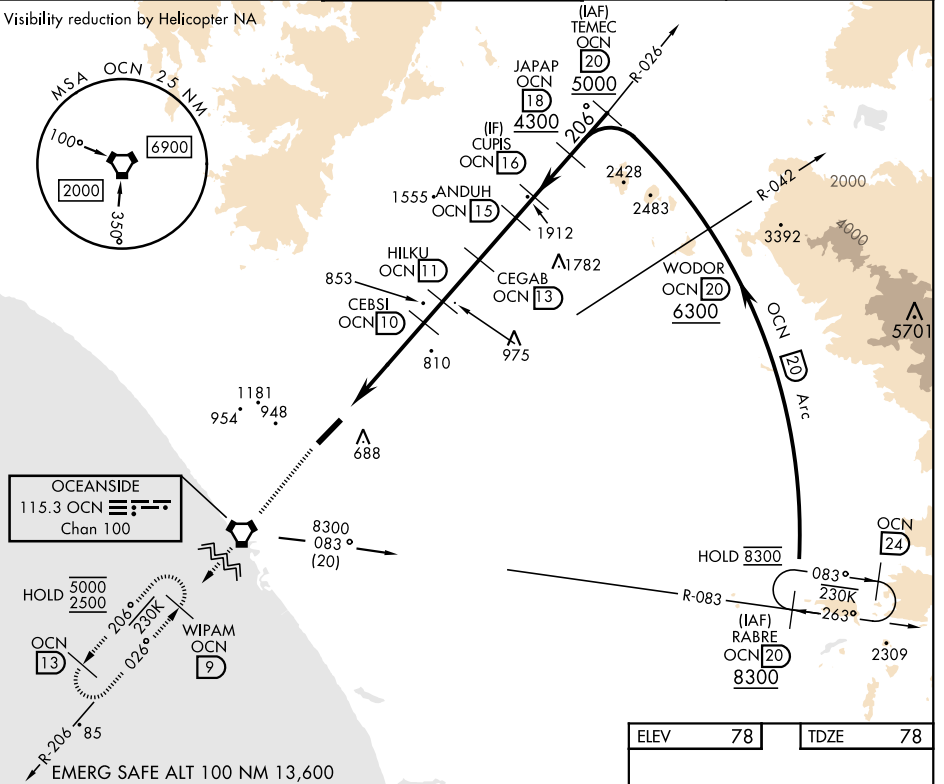
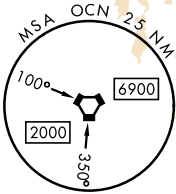
[USN] CAMP PENDLETON MCAS (MUNN FLD) (KNFG)

▼ \* When ALS inop, increase CAT A vis to 1½ miles, CAT B vis to 1½ miles, CAT CD vis to 3 miles.  
 \*\* Circling Rwy 3 not authorized at night when VGSI inop.

A2 SALSF MISSED APPROACH: Climb to 2500 direct OCN VORTAC then direct WIPAM and hold.

ATIS ★ <b>285.45</b>	SOCAL APP CON <b>127.3 323.0</b>	TOWER ★ <b>128.775 0 340.2</b>	GND CON <b>134.675 360.2</b>	CLNC DEL <b>134.675 271.6</b>	ASR/PAR
-------------------------	-------------------------------------	-----------------------------------	---------------------------------	----------------------------------	---------

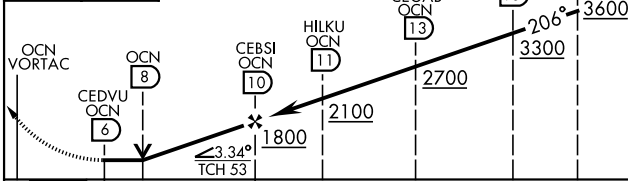
Visibility reduction by Helicopter NA



SW-3, 11 JUL 2024 to 08 AUG 2024

SW-3, 11 JUL 2024 to 08 AUG 2024

↑ 2500 OCN WIPAM OCN 9  
 VGSI and descent angle not coincident (VGSI Angle 3.50/TCH 53).



CATEGORY	A	B	C	D
S-21*	1140-1 1062 (1100-1)	1140-1¼ 1062 (1100-¼)	1140-2½	1062 (1100-2½)
CIRCLING**	1140-1¼ 1062 (1100-¼)	1260-1½ 1182 (1200-½)	1500-3	1422 (1500-3)

ELEV 78	TDZE 78
---------	---------

HIRL Rwy 3-21

OCEANSIDE, CALIFORNIA

33° 18' N-117° 21' W

CAMP PENDLETON MCAS (MUNN FLD) (KNFG)

Amtd 5 02DEC21

# VOR/DME or TACAN Y RWY 21