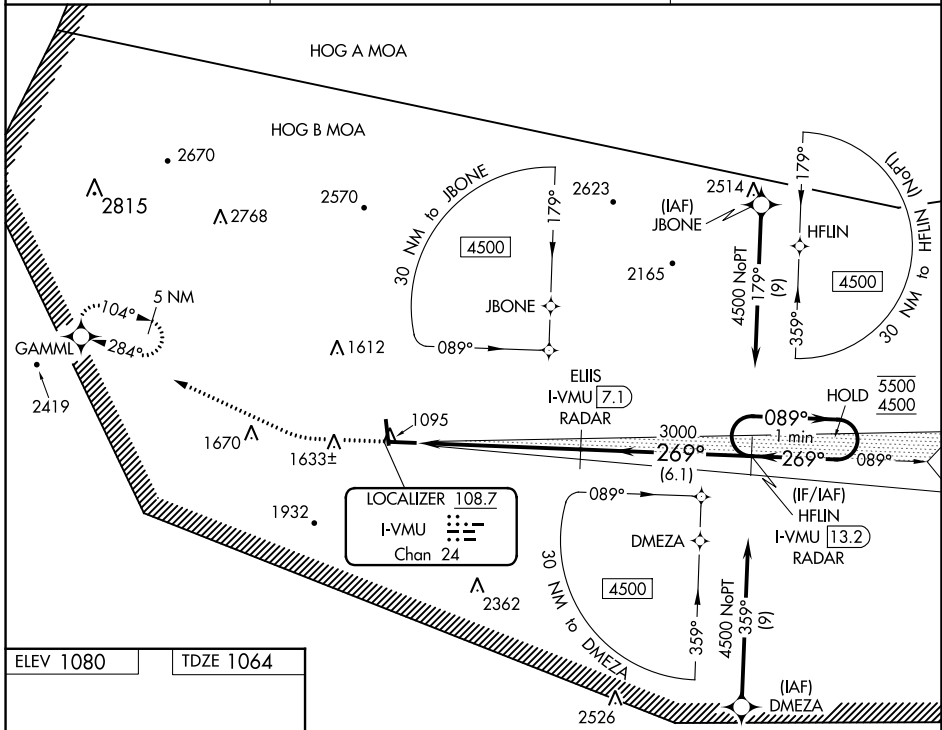


| | | |
|---|------------------------|---|
| LOC/DME I-VMU 108.7 Chan 24 | APP CRS 269° | Rwy Idg 5485 TDZE 1064 Apt Elev 1080 |
|---|------------------------|---|

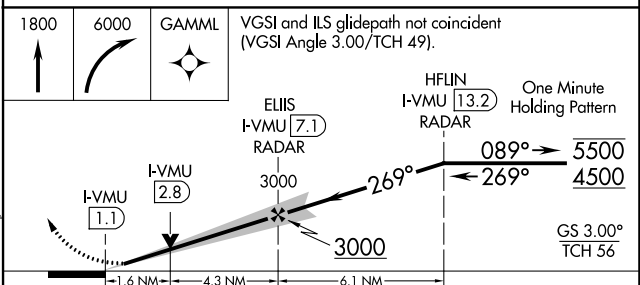
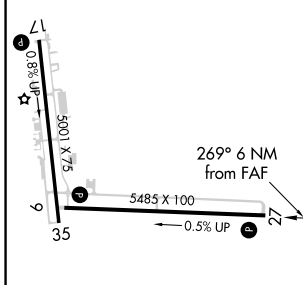
ILS or LOC RWY 27

MENA INTERMOUNTAIN MUNI (MEZ)

| | | |
|--|--------------------------------------|--|
| DME or RADAR required. RNP APCH - GPS. | | MISSED APPROACH: Climb to 1800 then climbing right turn to 6000 direct GAMML and hold, continue climb-in-hold to 6000. |
| Circling Rwy 35 NA at night. | | |
| AWOS-3 118.025 | MEMPHIS CENTER 126.1 269.0 | UNICOM 122.8 (CTAF) 0 |



| | |
|-----------|-----------|
| ELEV 1080 | TDZE 1064 |
|-----------|-----------|



| CATEGORY | A | B | C | D |
|--|-----------------------|---------------------------|-------------------------|----|
| S-ILS 27 | 1502-1¼ 438 (500-1¼) | | | NA |
| S-LOC 27 | 1620-1 | 556 (600-1) | 1620-1⅝ 556 (600-1⅝) | NA |
| <input checked="" type="checkbox"/> CIRCLING | 1840-1 760 (800-1) | 2140-1½ 1060 (1100-1½) | 2220-3 1140 (1200-3) | NA |

SC-1, 11 JUL 2024 to 08 AUG 2024

SC-1, 11 JUL 2024 to 08 AUG 2024