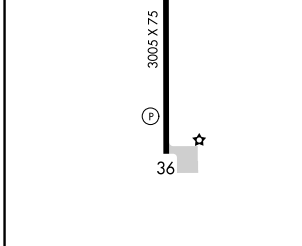
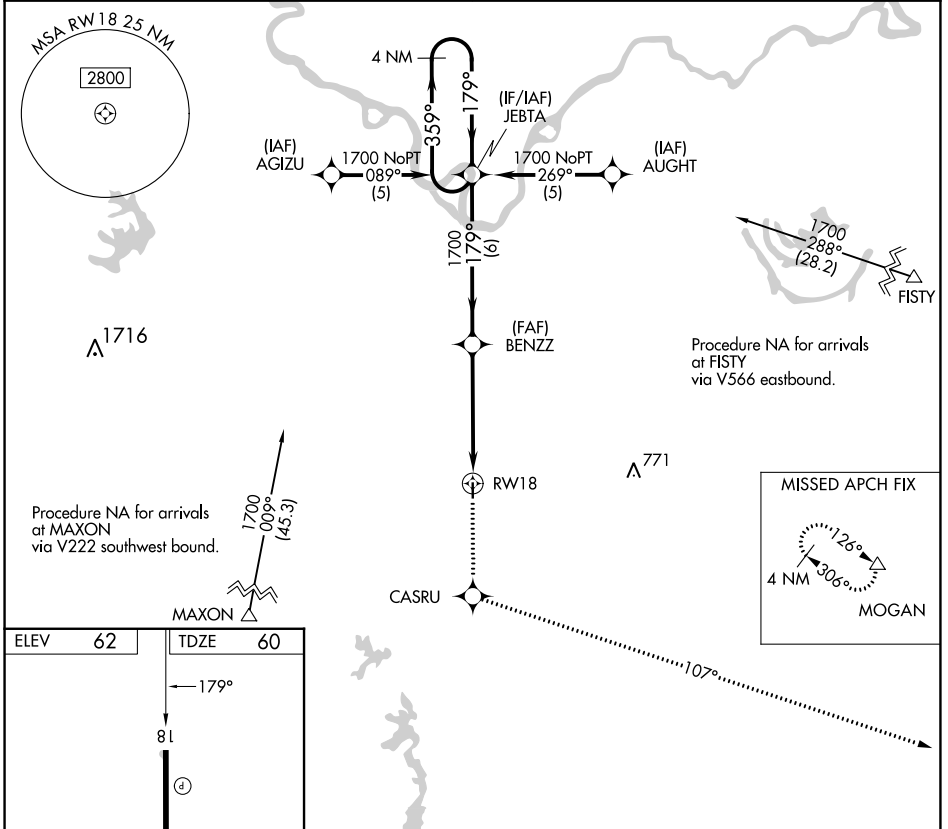


APP CRS	Rwy Idg	3005
179°	TDZE	60
	Apt Elev	62

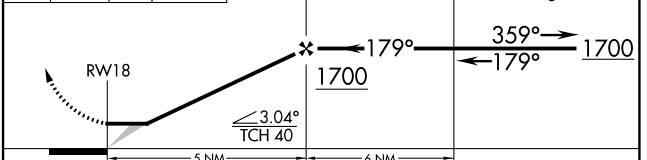
RNAV (GPS) RWY 18

BUNKIE MUNI (2R6)

RNP APCH.	MISSED APPROACH: Climb to 2000 direct CASRU and via 107° track to MOGAN and hold.
<p>Use Alexandria Intl altimeter setting; when not received, use Esler Rgnl altimeter setting.</p>	
POLK APP CON 125.4 302.2	CTAF 122.9



2000	CASRU	107° tr	MOGAN	VGSI and descent angles not coincident (VGSI Angle 3.00/TCH 25).
				BENZZ



CATEGORY	A	B	C	D
LNAV MDA	600-1	540 (600-1)	NA	

REIL Rwy 18 and 36
MIRL Rwy 18-36

SC-4, 11 JUL 2024 to 08 AUG 2024

SC-4, 11 JUL 2024 to 08 AUG 2024