

| | | |
|-------------|----------|-------------|
| APP CRS | Rwy Idg | 3005 |
| 359° | TDZE | 60 |
| | Apt Elev | 62 |

RNAV (GPS) RWY 36

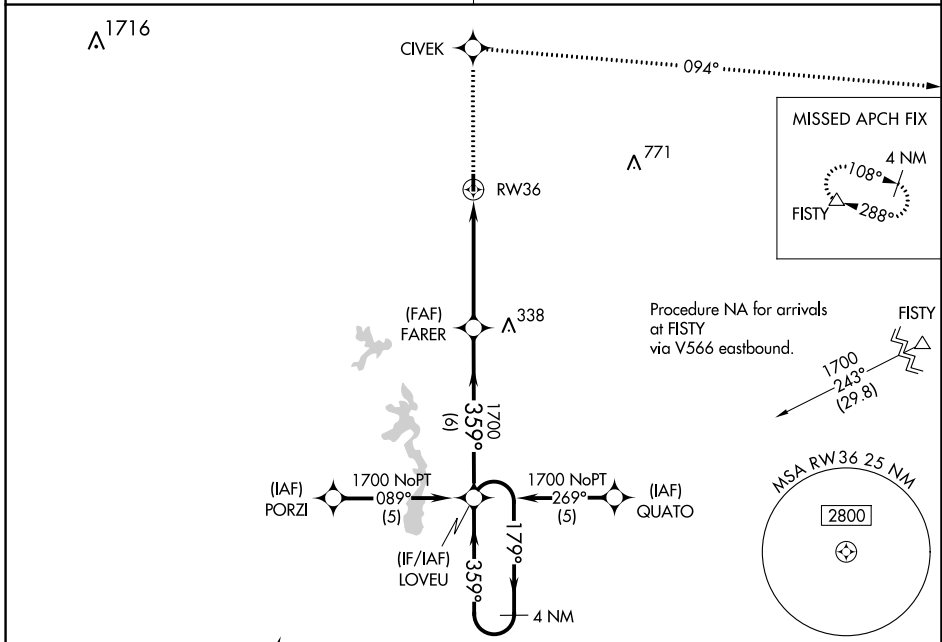
BUNKIE MUNI (2R6)

NA DME/DME RNP-0.3 NA. Visibility reduction by helicopters NA. Use Alexandria Intl altimeter setting; when not received, use Esler Rgnl altimeter setting.

MISSED APPROACH: Climb to 4000 direct CIVEK and right turn via 094° track to FISTY and hold.

POLK APP CON **125.4 302.2**

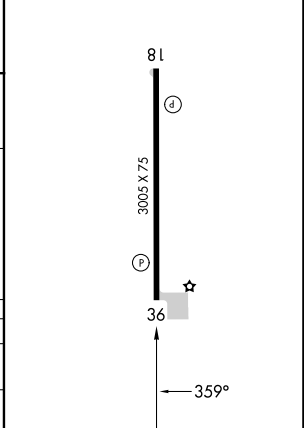
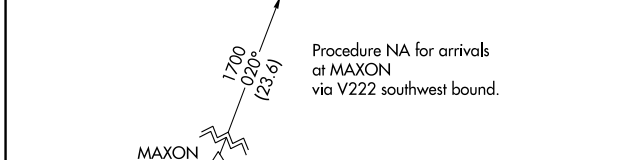
CTAF **122.9**



| | | | |
|------|-----------|------|-----------|
| ELEV | 62 | TDZE | 60 |
|------|-----------|------|-----------|

REIL Rwy 18 and 36 **1**

MIRL Rwy 18-36 **1**



| | | | |
|--|--|-------|--------------------|
| VGSi and descent angles not coincident (VGSi Angle 3.25/TCH 26). | | | |
| 4 NM Holding Pattern | LOVEU | FARER | |
| 1700 | \leftarrow 179° \rightarrow 359° \rightarrow | 1700 | \rightarrow RW36 |
| 6 NM | | 5 NM | |

| | | | | |
|----------|-------------------|-------------------|----|---|
| CATEGORY | A | B | C | D |
| RNAV MDA | 580-1 520 (600-1) | | NA | |
| CIRCLING | 580-1 518 (600-1) | 660-1 598 (600-1) | NA | |

SC-4, 11 JUL 2024 to 08 AUG 2024

SC-4, 11 JUL 2024 to 08 AUG 2024