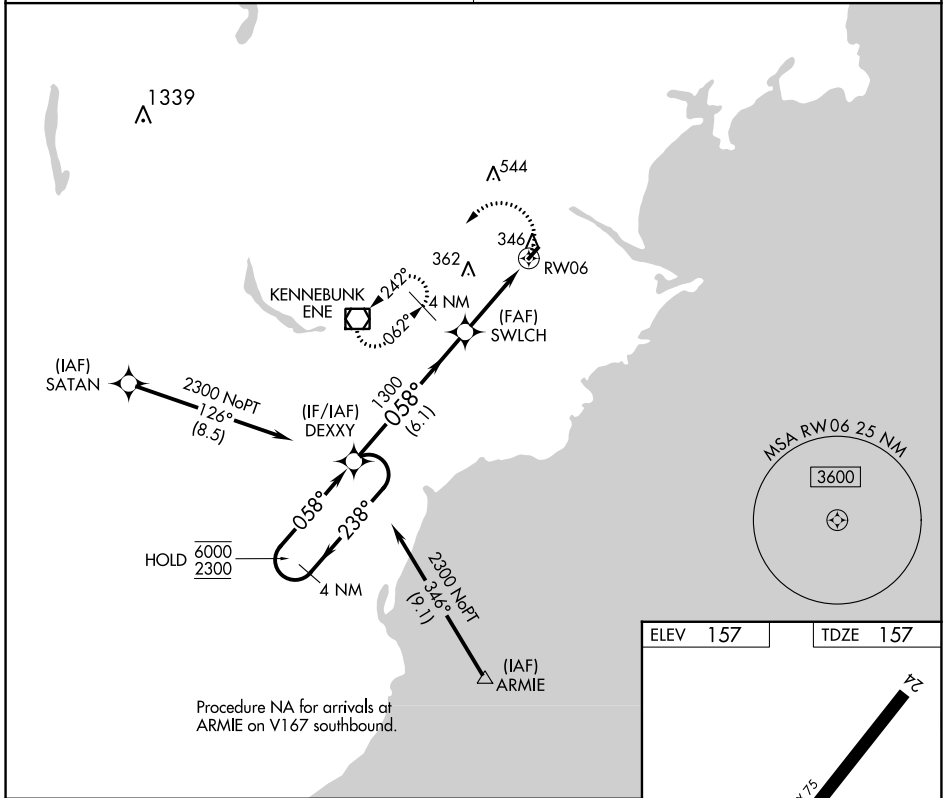


APP CRS	Rwy Idg	3000
058°	TDZE	157
	Apt Elev	157

RNAV (GPS) RWY 6

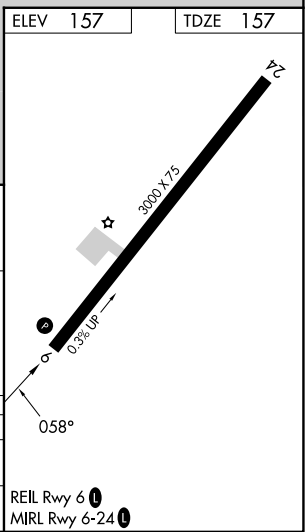
BIDDEFORD MUNI (B19)

RNP APCH.		MISSED APPROACH: Climbing left turn to 3000 direct ENE VOR/DME and hold, continue climb-in-hold to 3000.
<p>▽ Rwy 6 helicopter visibility reduction below 3/4 SM NA. Obtain local altimeter setting on CTAF; when not received use Sanford altimeter setting and increase all MDA 40 feet and LNAV visibility Cat C 1/8 SM, and Circling visibility Cat C 1/4 SM. VDP NA when using Sanford altimeter setting. Circling Rwy 24 NA at night.</p> <p>△ NA</p>		
PORTLAND APP CON ★ 119.75 269.35		UNICOM 123.0 (CTAF) 1



NE-1, 11 JUL 2024 to 08 AUG 2024

NE-1, 11 JUL 2024 to 08 AUG 2024



4 NM Holding Pattern DEXXY

VGSI and descent angles not coincident (VGSI Angle 3.50/TCH 31).

6000	← 238°	SWLCH	→ 058°	3000	ENE
2300	← 058°	1300	→ 058°	3000	ENE
		1.4 NM to RW06			
		3.03° TCH 31			
		6.1 NM	2.1 NM	1.4 NM	

CATEGORY	A	B	C	D
LNAV MDA	680-1	523 (600-1)	680-1½ 523 (600-1½)	NA
CIRCLING	780-1	623 (700-1)	800-1¾ 643 (700-1¾)	NA

REIL Rwy 6 1
MRL Rwy 6-24 1