

| | | |
|-------------|----------|-------------|
| APP CRS | Rwy Idg | 4887 |
| 175° | TDZE | 707 |
| | Apt Elev | 719 |

RNAV (GPS) RWY 17

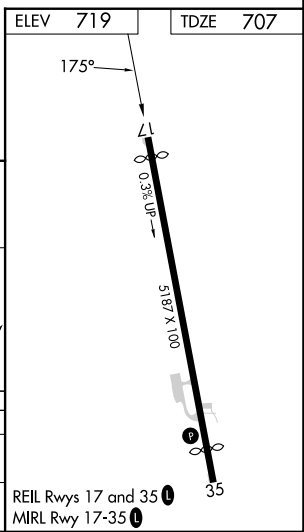
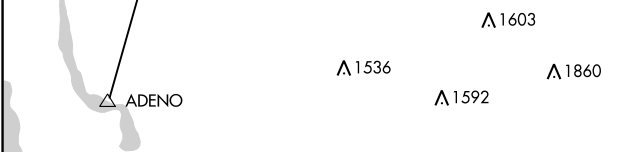
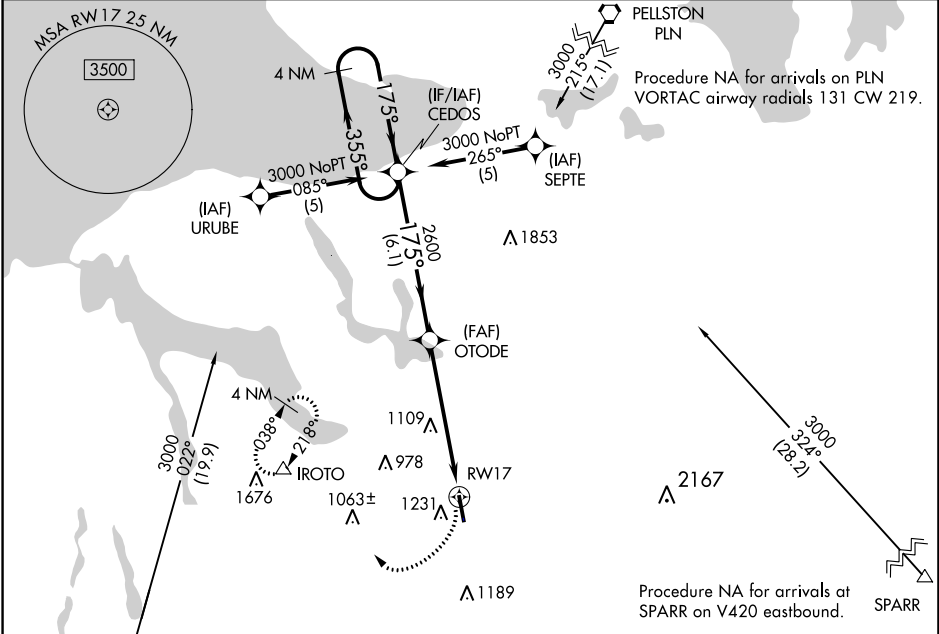
BOYNE MOUNTAIN (BFA)

RNP APCH - GPS

NA Circling NA west of Rwy 17-35. Rwy 17 helicopter visibility reduction below 1 SM NA. Procedure NA at night. When local altimeter setting not received, use Bellaire altimeter setting. VDP NA when using Bellaire altimeter setting.

MISSED APPROACH:
Climbing right turn to 3000 direct IROTO and hold.

| | | | |
|----------------------------|---|-------------------------------|---------------|
| AWOS-3PT 118.675 | MINNEAPOLIS CENTER 134.6 354.05 | UNICOM 122.8 (CTAF) | 122.85 |
|----------------------------|---|-------------------------------|---------------|



| | | | | |
|----------|---------------------------|---------------------------|---------------------------|---------------------------|
| CATEGORY | A | B | C | D |
| LNVA MDA | 1580 - 1 873 (900-1) | 1580 - 1¼ 873 (900-1¼) | 1580 - 2½ 873 (900-2½) | 1580 - 2¾ 873 (900-2¾) |
| CIRCLING | 1580 - 1¼ 861 (900-1¼) | 1760 - 3 1041 (1100-3) | 1880 - 3 1161 (1200-3) | |

EC-1, 11 JUL 2024 to 08 AUG 2024

EC-1, 11 JUL 2024 to 08 AUG 2024