

(BLTWY7.BLTWY) 21280

AL-6032 (FAA)

WHARTON RGNL (A.R.M)

# BLTWY SEVEN DEPARTURE (RNAV)

WHARTON, TEXAS

CTAF  
122.7  
HOUSTON DEP CON  
128.6 360.85

**TOP ALTITUDE:  
ASSIGNED BY ATC**

NOTE: RADAR required.  
NOTE: DME/DME/IRU or GPS required.  
NOTE: RNAV 1.

### TAKEOFF MINIMUMS

Rwy 14, 32: Standard with minimum  
climb of 500' per NM to 600.

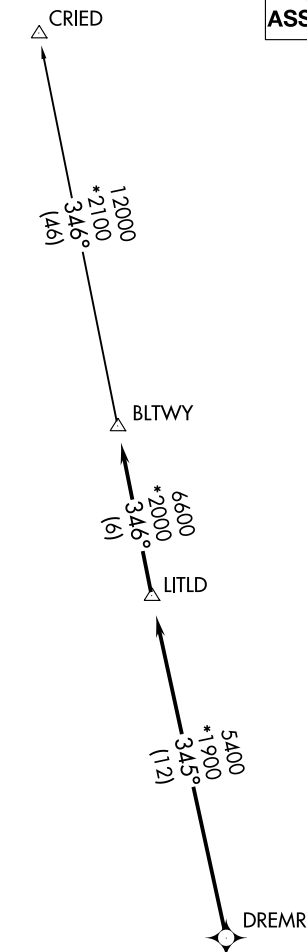
### DEPARTURE ROUTE DESCRIPTION

TAKEOFF RUNWAY 14: Climb on heading  
148° or as assigned by ATC for RADAR  
vectors to DREMR, thence . . . .

TAKEOFF RUNWAY 32: Climb on heading  
328° or as assigned by ATC for RADAR  
vectors to DREMR, thence . . . .

...on track 345° to LITLD, then on track 346°  
to BLTWY, then on (transition). Maintain ATC  
assigned altitude. Expect filed altitude 10  
minutes after departure.

CRIED TRANSITION (BLTWY7.CRIED)



NOTE: Chart not to scale.

# BLTWY SEVEN DEPARTURE (RNAV)

(BLTWY7.BLTWY) 07OCT21

WHARTON, TEXAS

WHARTON RGNL (A.R.M)

SC-5, 11 JUL 2024 to 08 AUG 2024

SC-5, 11 JUL 2024 to 08 AUG 2024