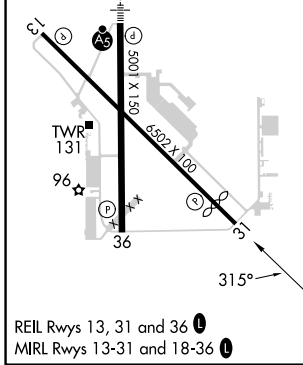
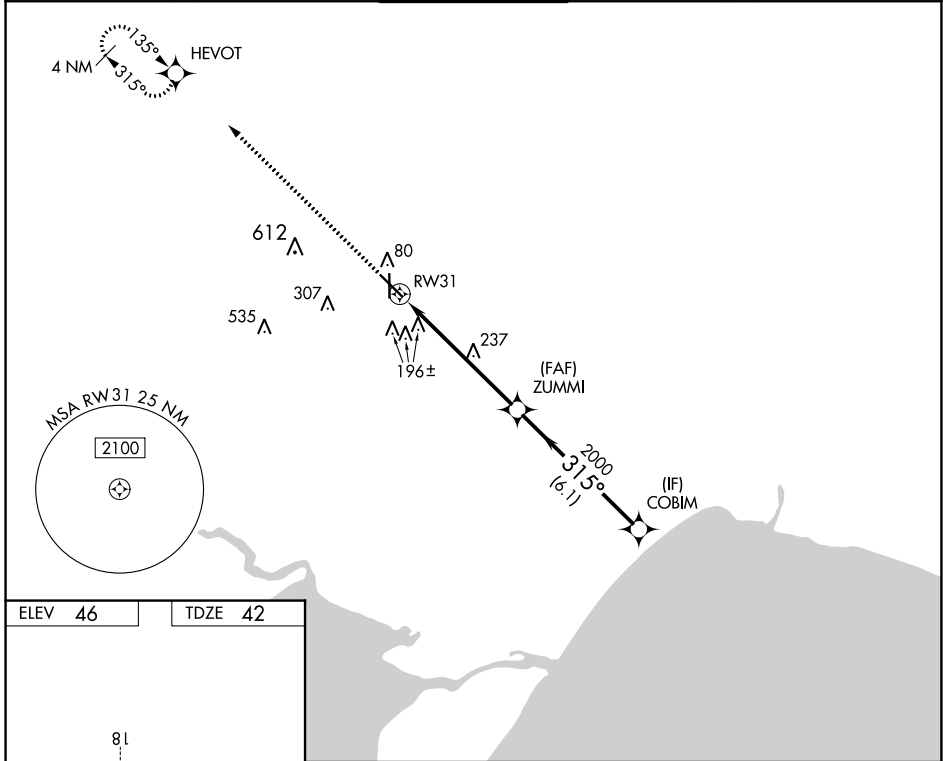


APP CRS	Rwy Idg	<b>5812</b>
<b>315°</b>	TDZE	<b>42</b>
	Apt Elev	<b>46</b>

# RNAV (GPS) RWY 31

HAMMOND NORTHSORE RGNL (HDC)

RNP APCH - GPS.		<p><b>▼</b> Rwy 31 helicopter visibility reduction below <math>\frac{3}{4}</math> SM NA. VDP NA when using Louis Armstrong New Orleans Intl altimeter setting. When local altimeter setting not received, use Louis Armstrong New Orleans Intl altimeter setting and increase all MDAs 100 feet and LNAV visibility Cat C/D <math>\frac{1}{4}</math> SM, and Circling visibility Cat C/D <math>\frac{1}{2}</math> SM.</p>		<p>MISSED APPROACH: Climb to 2000 direct HEVOT and hold.</p>	
ATIS	NEW ORLEANS APP CON	<b>HAMMOND TOWER ★</b>	GND CON	CLNC DEL	
<b>118.325</b>	<b>119.3 350.35</b>	<b>120.575 (CTAF) 0</b>	<b>119.85</b>	<b>119.3</b>	
				(When twr closed)	



2000	HEVOT	ZUMMI	COBIM	
↑	✦			
1.2 NM to RWY 31		4.8 NM	6.1 NM	
315°		315°	2000	
3.05° TCH 50		VGSI and descent angles not coincident (VGSI Angle 3.30/TCH 56).		
CATEGORY	A	B	C	D
LNAV MDA	500-1	458 (500-1)	500-1 $\frac{3}{8}$	458 (500-1 $\frac{3}{8}$ )
<b>C</b> CIRCLING	500-1	454 (500-1)	620-1 $\frac{1}{2}$	920-2 $\frac{3}{4}$
			574 (600-1 $\frac{1}{2}$ )	874 (900-2 $\frac{3}{4}$ )

SC-4, 11 JUL 2024 to 08 AUG 2024

SC-4, 11 JUL 2024 to 08 AUG 2024