

(BLECO8.BLECO) 23334

AL-6039 (FAA)

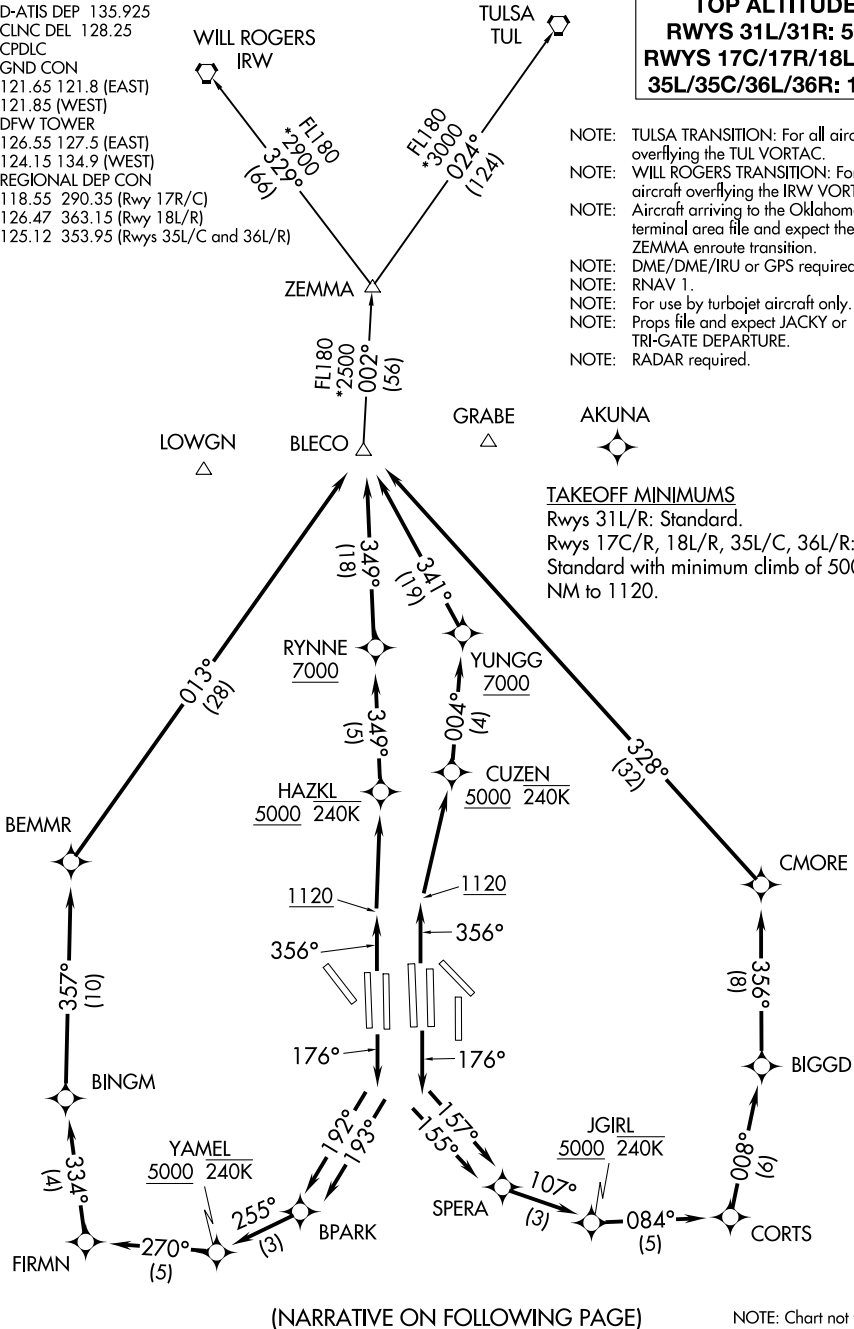
DALLAS-FORT WORTH INTL (DFW)  
DALLAS-FORT WORTH, TEXAS

# BLECO EIGHT DEPARTURE (RNAV)

D-ATIS DEP 135.925  
 CLNC DEL 128.25  
 CPDLC  
 GND CON  
 121.65 121.8 (EAST)  
 121.85 (WEST)  
 DFW TOWER  
 126.55 127.5 (EAST)  
 124.15 134.9 (WEST)  
 REGIONAL DEP CON  
 118.55 290.35 (Rwy 17R/C)  
 126.47 363.15 (Rwy 18L/R)  
 125.12 353.95 (Rwys 35L/C and 36L/R)

**TOP ALTITUDE:**  
**RWYS 31L/31R: 5000**  
**RWYS 17C/17R/18L/18R/  
 35L/35C/36L/36R: 10000**

- NOTE: TULSA TRANSITION: For all aircraft overflying the TUL VORTAC.
- NOTE: WILL ROGERS TRANSITION: For all aircraft overflying the IRW VORTAC.
- NOTE: Aircraft arriving to the Oklahoma City terminal area file and expect the ZEMMA enroute transition.
- NOTE: DME/DME/IRU or GPS required.
- NOTE: RNAV 1.
- NOTE: For use by turbojet aircraft only.
- NOTE: Props file and expect JACKY or TRI-GATE DEPARTURE.
- NOTE: RADAR required.



### TAKEOFF MINIMUMS

Rwys 31L/R: Standard.  
 Rwys 17C/R, 18L/R, 35L/C, 36L/R:  
 Standard with minimum climb of 500' per  
 NM to 1120.

(NARRATIVE ON FOLLOWING PAGE)

NOTE: Chart not to scale.

# BLECO EIGHT DEPARTURE (RNAV)

(BLECO8.BLECO) 29MAR18

DALLAS-FORT WORTH, TEXAS  
DALLAS-FORT WORTH INTL (DFW)

SC-2, 11 JUL 2024 to 08 AUG 2024

SC-2, 11 JUL 2024 to 08 AUG 2024



DEPARTURE ROUTE DESCRIPTION

TAKEOFF RWY 17C: Climb heading 176° to intercept course 157° to SPERA, then on track 107° to cross JGIRL at or above 5000, then on depicted route to BLECO, thence. . . .

TAKEOFF RWY 17R: Climb heading 176° to intercept course 155° to SPERA, then on track 107° to cross JGIRL at or above 5000, then on depicted route to BLECO, thence. . . .

TAKEOFF RWY 18L: Climb heading 176° to intercept course 193° to BPARK, then on track 255° to cross YAMEL at or above 5000, then on depicted route to BLECO, thence. . . .

TAKEOFF RWY 18R: Climb heading 176° to intercept course 192° to BPARK, then on track 255° to cross YAMEL at or above 5000, then on depicted route to BLECO, thence. . . .

TAKEOFF RWYS 35L/C: Climb heading 356° to 1120, then direct CUZEN, cross CUZEN at or above 5000, then on track 004° to cross YUNGG at or above 7000, then on depicted route to BLECO, thence. . . .

TAKEOFF RWYS 36L/R: Climb heading 356° to 1120, then direct HAZKL, cross HAZKL at or above 5000, then on track 349° to cross RYNNE at or above 7000, then on depicted route to BLECO, thence. . . .

. . . .on (transition) maintain 10000. Expect filed altitude ten minutes after departure.

TAKEOFF RWYS 31L/R: Climb heading assigned by ATC, expect RADAR vectors to BLECO, thence. . . .

. . . .on (transition) maintain 5000. Expect filed altitude ten minutes after departure.

- TULSA TRANSITION (BLECO8.TUL)
- WILL ROGERS TRANSITION (BLECO8.IRW)
- ZEMMA TRANSITION (BLECO8.ZEMMA)

SC-2, 11 JUL 2024 to 08 AUG 2024

SC-2, 11 JUL 2024 to 08 AUG 2024