

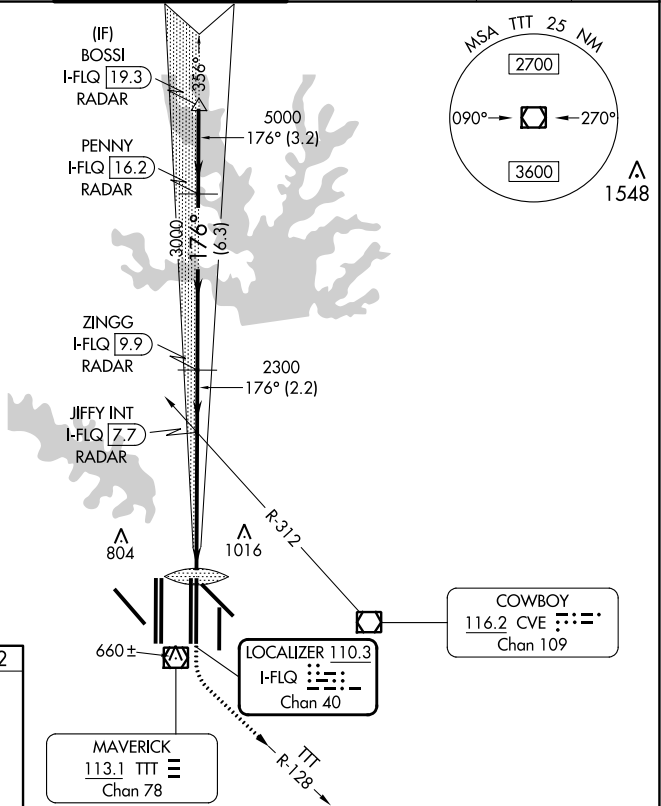
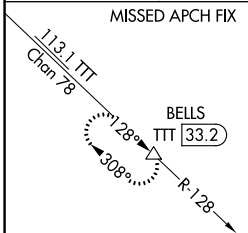
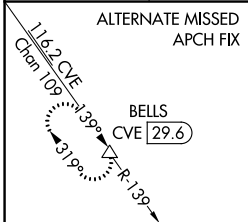
LOC/DME I-FLQ 110.3 Chan 40	APP CRS 176°	Rwy ldg 13400 TDZE 562 Apt Elev 607
---	------------------------	--

CONVERGING ILS RWY 17C

DALLAS-FORT WORTH INTL (DFW)

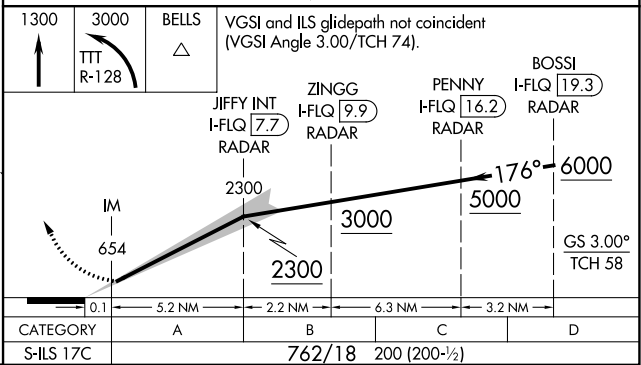
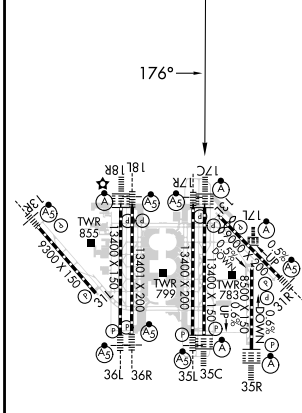
▼ DME or RADAR required. Simultaneous approach authorized with Converging ILS Rwy 13R.	ALSF-2 	MISSED APPROACH: Climb to 3000 then climbing left turn to 3000 on TTT VOR/DME R-128 to BELLS/TTT 33.2 DME and hold.
--	------------	---

D-ATIS ARR 123.775 DEP 135.925	REGIONAL APP CON 127.075	DFW TOWER 126.55 127.5 EAST 124.15 134.9 WEST	GND CON 121.65 121.8 EAST 121.85 WEST	CLNC DEL 128.25	CPDLC
--	------------------------------------	---	---	---------------------------	-------



RADAR REQUIRED

ELEV 607	D	TDZE 562
-----------------	----------	-----------------



SC-2, 11 JUL 2024 to 08 AUG 2024

SC-2, 11 JUL 2024 to 08 AUG 2024