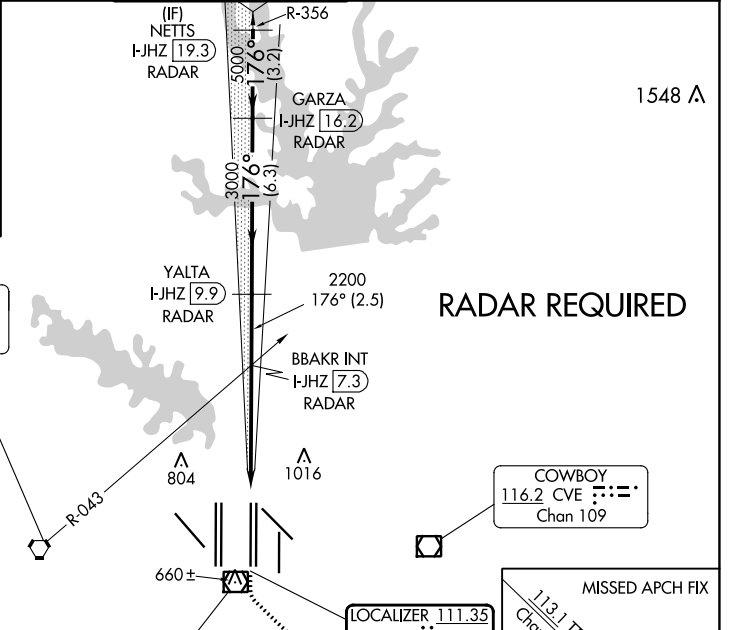
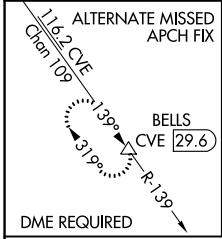


LOC/DME I-JHZ <b>111.35</b> Chan 50 (Y)	APP CRS <b>176°</b>	Rwy ldg <b>13400</b> TDZE <b>567</b> Apt Elev <b>607</b>
---	------------------------	--

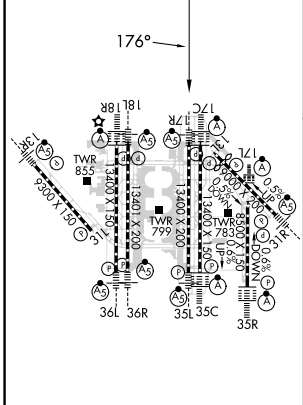
# CONVERGING ILS RWY 17R

DALLAS-FORT WORTH INTL (DFW)

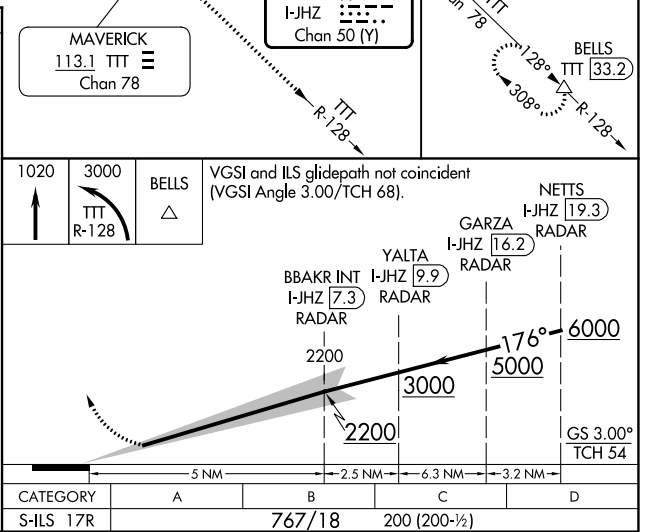
<p><b>▽</b> DME or RADAR required. Simultaneous approach authorized with Converging ILS Rwy 13R.</p>	<p>MALSR</p>	<p>MISSED APPROACH: Climb to 1020 then climbing left turn to 3000 on TTT VOR/DME R-128 to BELLS INT/TTT 33.2 DME and hold.</p>			
<p>D-ATIS ARR <b>123.775</b> DEP <b>135.925</b></p>	<p>REGIONAL APP CON <b>127.075</b></p>	<p>DFW TOWER <b>126.55 127.5</b> EAST <b>124.15 134.9</b> WEST</p>	<p>GND CON <b>121.65 121.8</b> EAST <b>121.85</b> WEST</p>	<p>CLNC DEL <b>128.25</b></p>	<p>CPDLC</p>



ELEV 607	<b>D</b>	TDZE 567
----------	----------	----------



HIRL all Rwy's  
REIL Rwy's 13L and 31L  
TDZ/CL all Rwy's except 13L and 31L



CATEGORY	A	B	C	D
S-ILS 17R	767/18		200 (200-½)	

# CONVERGING ILS RWY 17R

SC-2, 11 JUL 2024 to 08 AUG 2024

SC-2, 11 JUL 2024 to 08 AUG 2024