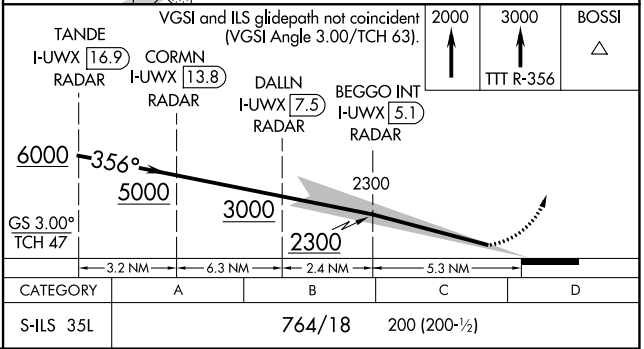
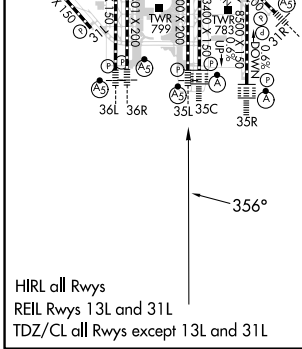
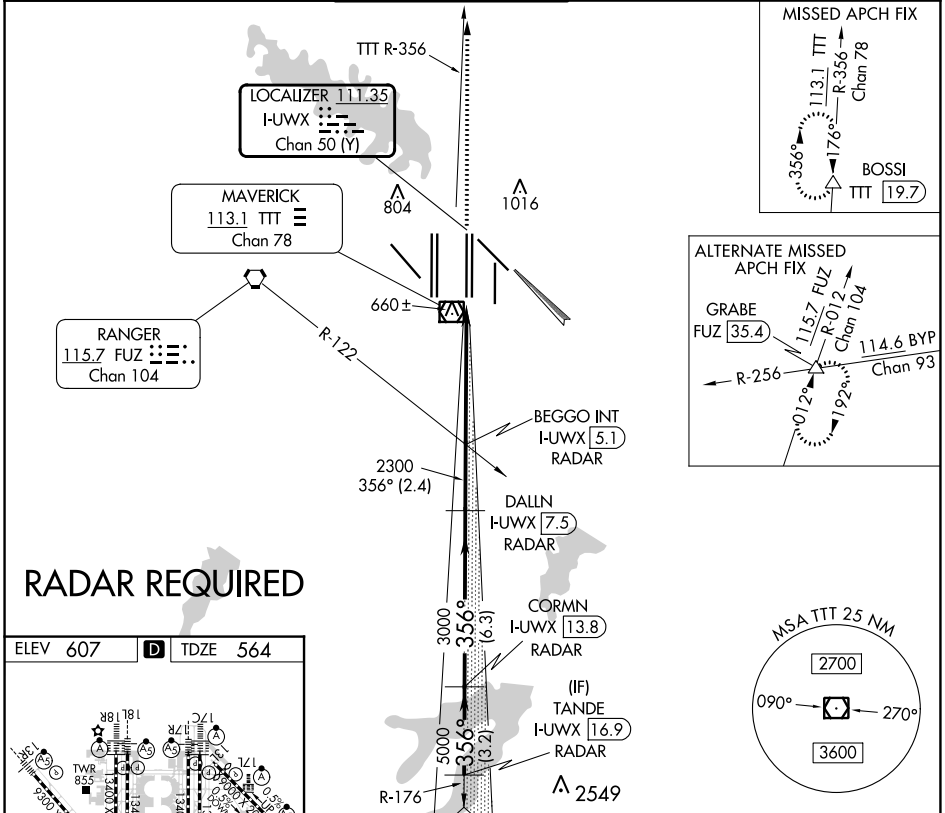


LOC/DME I-UWX 111.35 Chan 50 (Y)	APP CRS 356°	Rwy Idg 13400 TDZE 564 Apt Elev 607
--	------------------------	--

CONVERGING ILS RWY 35L

DALLAS-FORT WORTH INTL (DFW)

D-ATIS ARR 123.775 DEP 135.925	REGIONAL APP CON 127.075	DFW TOWER		GND CON 121.65 EAST 121.85 WEST	CLNC DEL 128.25	CPDLC
		126.55 EAST 124.15 WEST	127.5 EAST 134.9 WEST			



SC-2, 11 JUL 2024 to 08 AUG 2024

SC-2, 11 JUL 2024 to 08 AUG 2024