

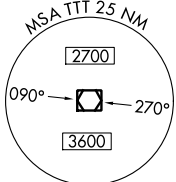
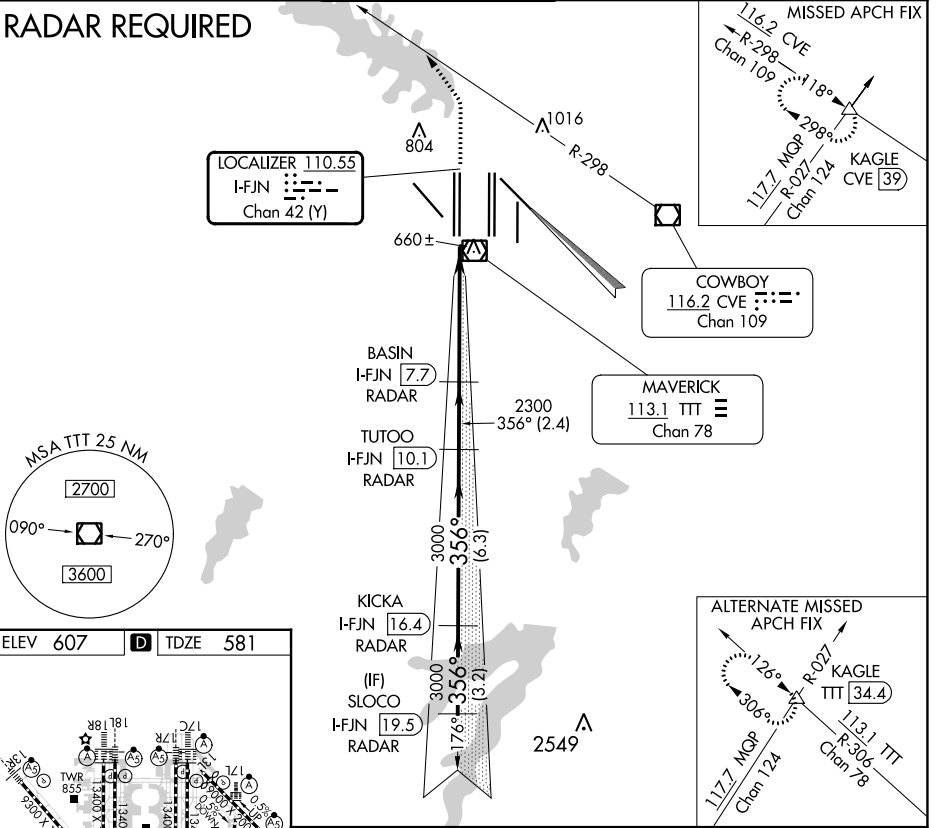
LOC/DME I-FJN 110.55 Chan 42 (Y)	APP CRS 356°	Rwy Idg TDZE Apt Elev	13401 581 607
--	------------------------	-----------------------------	--

CONVERGING ILS RWY 36R

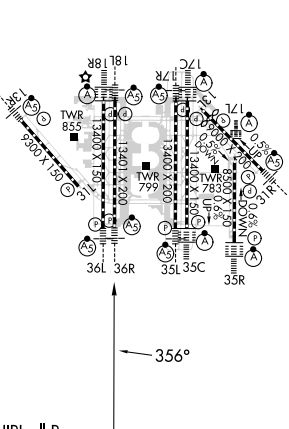
DALLAS-FORT WORTH INTL (DFW)

Simultaneous approach authorized with Converging ILS Rwy 31R. DME or Radar required.		MALSR 	MISSED APPROACH: Climb to 1100, then climbing left turn to 3000 on heading 320° and CVE VOR/DME R-298 to KAGLE INT/CVE 39 DME and hold.		
D-ATIS ARR 123.775 DEP 135.925	REGIONAL APP CON 118.425	DFW TOWER 126.55 127.5 EAST 124.15 134.9 WEST	GND CON 121.65 121.8 EAST 121.85 WEST	CLNC DEL 128.25	CPDLC

RADAR REQUIRED



ELEV 607	D	TDZE 581
----------	----------	----------



1100	3000	CVE R-298	KAGLE	TUTOO I-FJN [10.1] RADAR	KICKA I-FJN [16.4] RADAR	(IF) SLOCO I-FJN [19.5] RADAR	4000
hdg 320°				BASIN I-FJN [7.7] RADAR			GS 3.00° TCH 50
2300		2300		3000		356°	
5.3 NM		2.4 NM		6.3 NM		3.2 NM	
CATEGORY A		CATEGORY B		CATEGORY C		CATEGORY D	
S-ILS 36R		781/18		200 (200-½)			

VGSi and ILS glidepath not coincident (VGSi Angle 3.00/TCH 66).

SC-2, 11 JUL 2024 to 08 AUG 2024

SC-2, 11 JUL 2024 to 08 AUG 2024