

HRPER THREE DEPARTURE (RNAV)
(HRPER3, HRPER) 04FEB16

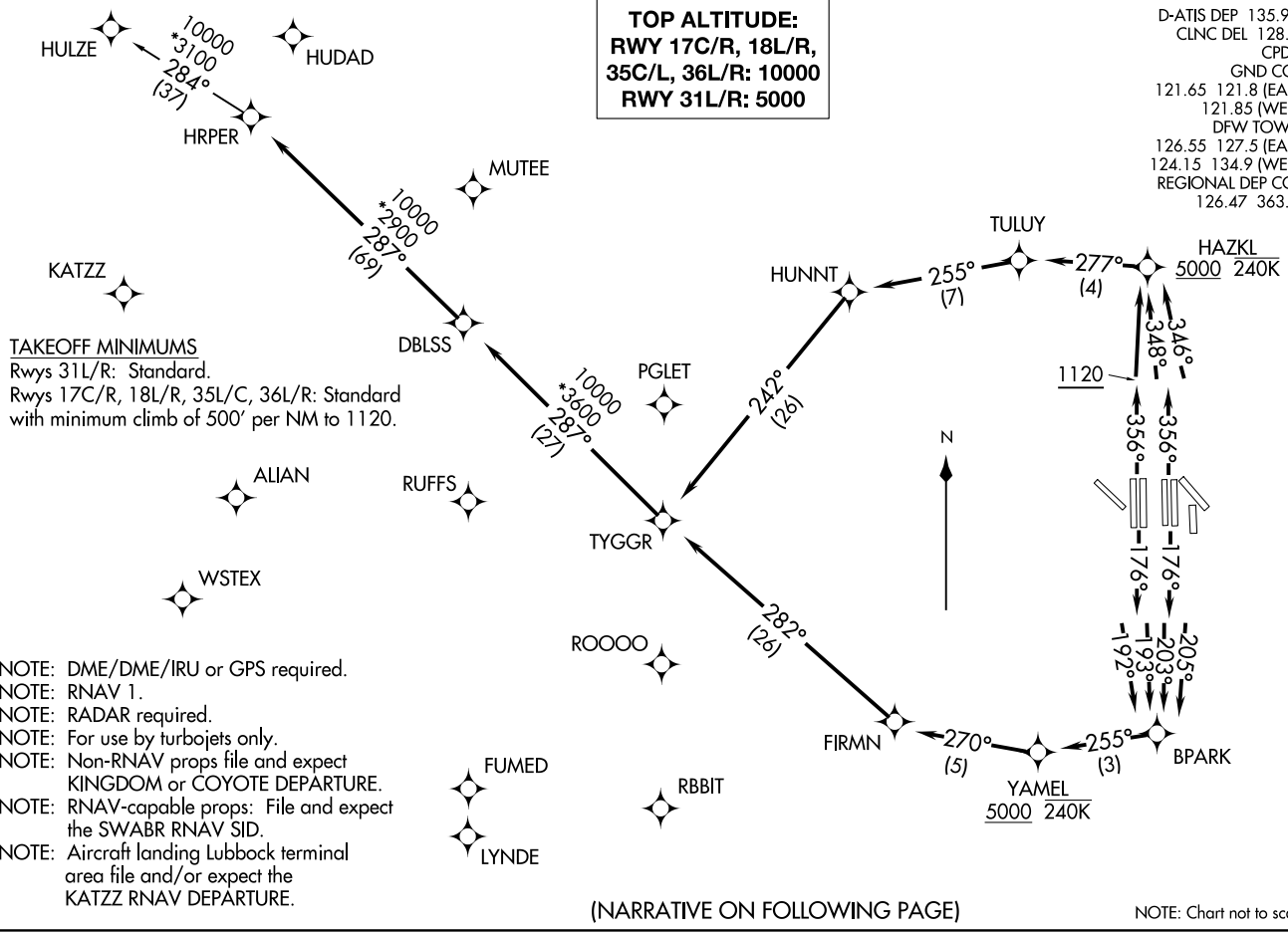
DALLAS-FORT WORTH, TEXAS
DALLAS-FORT WORTH INTL (DFW)

(HRPER3, HRPER) 23334
HRPER THREE DEPARTURE (RNAV)

AL-6039 (FAA)
DALLAS-FORT WORTH INTL (DFW)
DALLAS-FORT WORTH, TEXAS

TOP ALTITUDE:
RWY 17C/R, 18L/R,
35C/L, 36L/R: 10000
RWY 31L/R: 5000

D-ATIS DEP 135.925
CLNC DEL 128.25
CPDLC
GND CON
121.65 121.8 (EAST)
121.85 (WEST)
DFW TOWER
126.55 127.5 (EAST)
124.15 134.9 (WEST)
REGIONAL DEP CON
126.47 363.15





DEPARTURE ROUTE DESCRIPTION

TAKEOFF RUNWAY 17C: Climb heading 176° to intercept course 205° to BPARK, then on track 255° to cross YAMEL at or above 5000, then on track 270° to FIRMN, then on track 282° to TYGGR, thence

TAKEOFF RUNWAY 17R: Climb heading 176° to intercept course 203° to BPARK, then on track 255° to cross YAMEL at or above 5000, then on track 270° to FIRMN, then on track 282° to TYGGR, thence

TAKEOFF RUNWAY 18L: Climb heading 176° to intercept course 193° to BPARK, then on track 255° to cross YAMEL at or above 5000, then on track 270° to FIRMN, then on track 282° to TYGGR, thence

TAKEOFF RUNWAY 18R: Climb heading 176° to intercept course 192° to BPARK, then on track 255° to cross YAMEL at or above 5000, then on track 270° to FIRMN, then on track 282° to TYGGR, thence

TAKEOFF RUNWAY 35C: Climb heading 356° to intercept course 346° to cross HAZKL at or above 5000, then on track 277° to TULUY, then on track 255° to HUNNT, then on track 242° to TYGGR, thence

TAKEOFF RUNWAY 35L: Climb heading 356° to intercept course 348° to cross HAZKL at or above 5000, then on track 277° to TULUY, then on track 255° to HUNNT, then on track 242° to TYGGR, thence

TAKEOFF RUNWAYS 36L/R: Climb heading 356° to 1120, then direct to cross HAZKL at or above 5000, then on track 277° to TULUY, then on track 255° to HUNNT, then on track 242° to TYGGR, thence

. . . . on track 287° to DBLSS, then on track 287° to HRPER, then on (transition).
Maintain 10000, expect filed altitude ten minutes after departure.

TAKEOFF RUNWAYS 31L/R: Climb heading assigned by ATC, expect RADAR vectors to TYGGR, thence

. . . . on track 287° to DBLSS, then on track 287° to HRPER, then on (transition).
Maintain 5000, expect filed altitude ten minutes after departure.

HULZE TRANSITION (HRPER3.HULZE)

SC-2, 11 JUL 2024 to 08 AUG 2024

SC-2, 11 JUL 2024 to 08 AUG 2024