

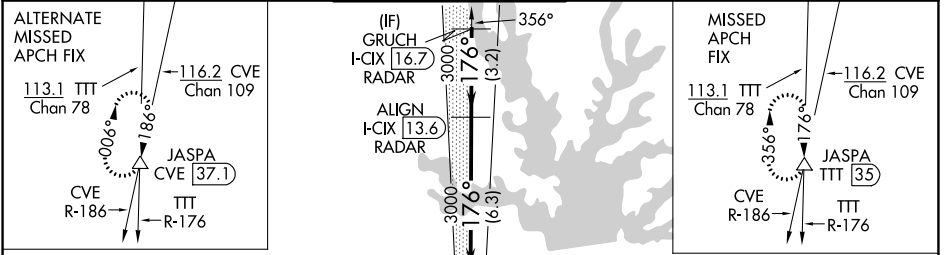
LOC/DME I-CIX 110.55	APP CRS 176°	Rwy Idg 13401 TDZE 602 Apt Elev 606
Chan 42 (Y)		

ILS RWY 18L (CONVERGING)

DALLAS-FORT WORTH INTL (DFW)

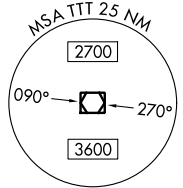
DME and RADAR required.		MALSR	MISSED APPROACH: Climb to 3000, then climb to 4000 on heading 170° and TTT VOR/DME R-176 to JASPA/TTT 35 DME and hold.
Simultaneous approach authorized with CONVERGING ILS RWY 13R.			

D-ATIS ARR 123.775 DEP 135.925	REGIONAL APP CON 118.425	DFW TOWER 126.55 127.5 EAST 124.15 134.9 WEST	GND CON 121.65 121.8 EAST 121.85 WEST	CLNC DEL 128.25	CPDLC
--	------------------------------------	---	---	---------------------------	-------

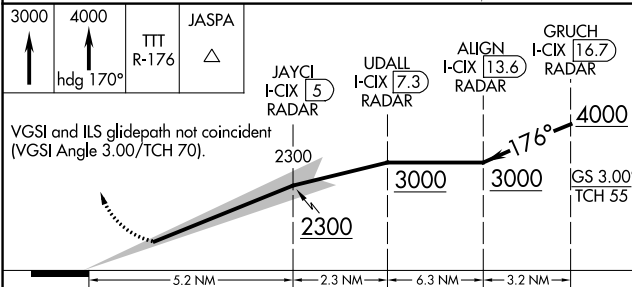
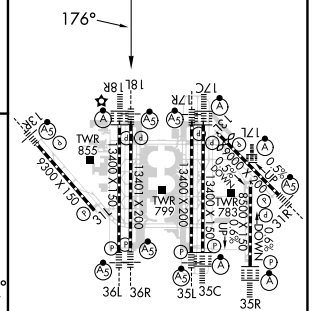


LOCALIZER 110.55
I-CIX [110.55]
Chan 42 (Y)

MAVERICK 113.1 TTT [113.1]
Chan 78



ELEV 606	D TDZE 602
----------	-------------------



CATEGORY	A	B	C	D	HIRL all Rws REIL Rws 13L and 31L TDZ/CL all Rws except 13L and 31L
S-ILS 18L	802/18 200 (200-½)				

ILS RWY 18L (CONVERGING)

SC-2, 11 JUL 2024 to 08 AUG 2024

SC-2, 11 JUL 2024 to 08 AUG 2024