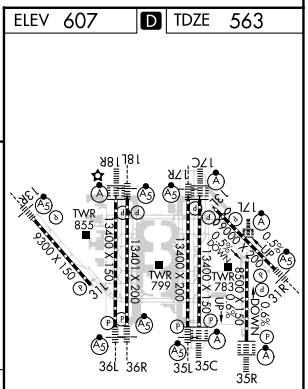
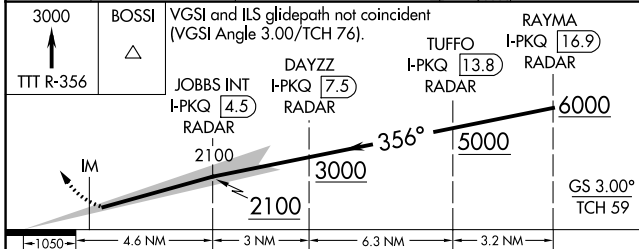
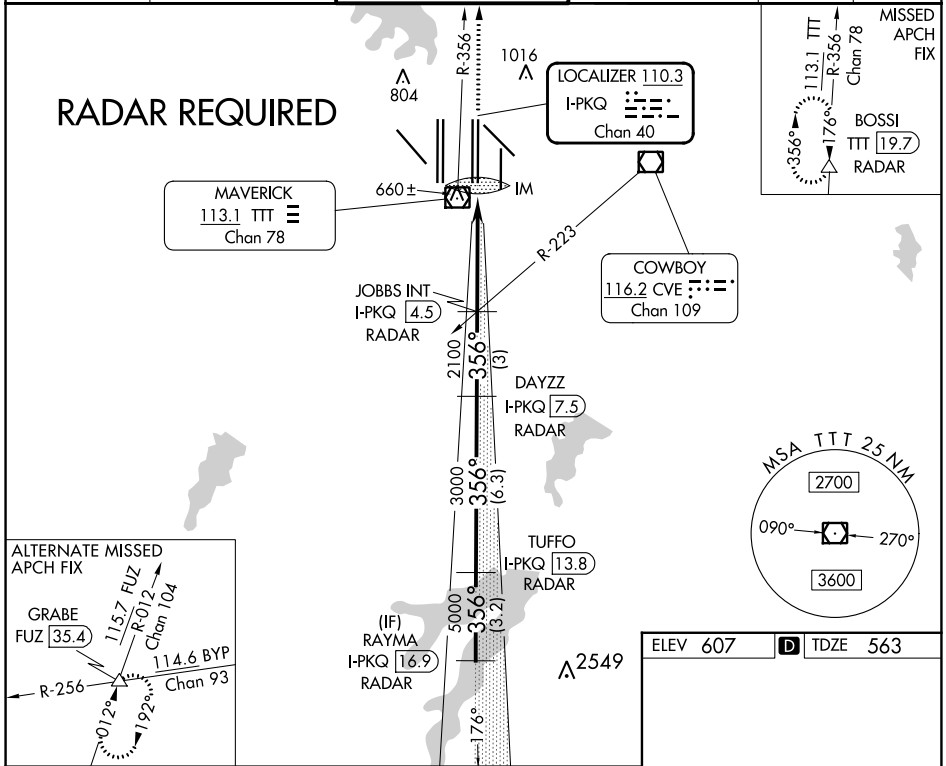


LOC/DME I-PKQ <b>110.3</b> Chan 40	APP CRS <b>356°</b>	Rwy Idg TDZE Apt Elev	<b>13400</b> <b>563</b> <b>607</b>
--	------------------------	-----------------------------	--

# ILS RWY 35C (SA CAT I)

DALLAS-FORT WORTH INTL (DFW)

DME or RADAR required. Simultaneous approach authorized with Rwy 35R, Rwy 36L/R. Requires specific OPSPEC, MSPEC, or LOA approval and use of HUD to DA.		ALSF-2 			
D-ATIS ARR <b>123.775</b> DEP <b>135.925</b>	REGIONAL APP CON <b>127.075</b>	DFW TOWER <b>126.55 127.5</b> EAST <b>124.15 134.9</b> WEST	GND CON <b>121.65 121.8</b> EAST <b>121.85</b> WEST	CLNC DEL <b>128.25</b>	CPDLC



CATEGORY	A	B	C	D
S-ILS 35C	RA 153/14		150 DA 713	

**SA CATEGORY I ILS - SPECIAL AIRCREW & AIRCRAFT CERTIFICATION REQUIRED**

HIRL all Rwys  
REIL Rwys 13L and 31L  
TDZ/CL all Rwys except 13L and 31L

SC-2, 11 JUL 2024 to 08 AUG 2024

SC-2, 11 JUL 2024 to 08 AUG 2024