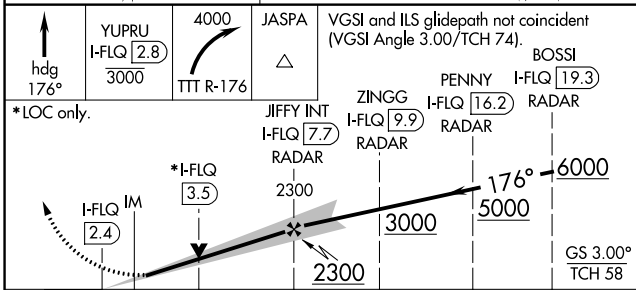
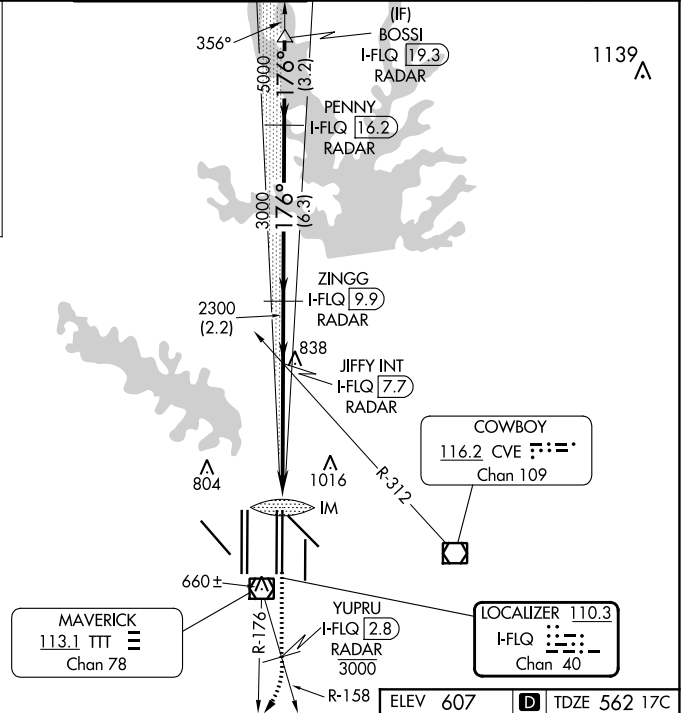
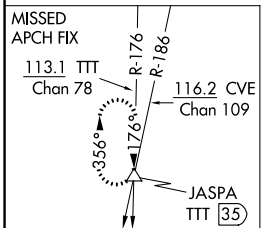
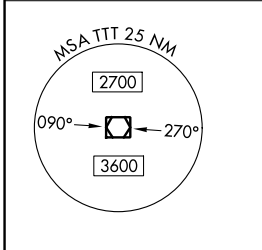
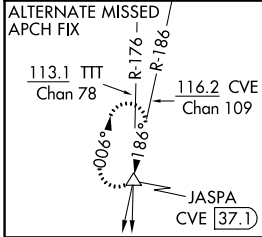


LOC/DME I-FLQ 110.3 Chan 40	APP CRS 176°	Rwy 17C Idg 13400 TDZE 562 Apt Elev 607	Rwy 17R Idg 13400 TDZE 567 Apt Elev 607
---	------------------------	--	--

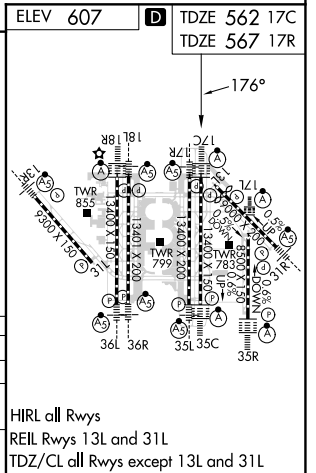
ILS or LOC RWY 17C

DALLAS-FORT WORTH INTL (DFW)

DME and RADAR required. Simultaneous approach authorized with Rwy 17L, 18L/R. Inop table does not apply to sidestep 17R Cats A and B.		Rwy 17C ALSF-2 	Rwy 17R MALSR 	MISSED APPROACH: Climb on heading 176° to cross YUPRU/2.8 DME/RADAR at or below 3000, then climbing right turn to 4000 on TTT VOR/DME R-176 to JASPA/TTT 35 DME and hold.		
D-ATIS ARR 123.775 DEP 135.925	REGIONAL APP CON 127.075	DFW TOWER 126.55 127.5 EAST 124.15 134.9 WEST		GND CON 121.65 121.8 EAST 121.85 WEST	CLNC DEL 128.25	CPDLC



YUPRU I-FLQ 2.8 3000	4000 TTT R-176	JASPA 	VGSI and ILS glidepath not coincident (VGSI Angle 3.00/TCH 74).		
*LOC only.		JIFFY INT I-FLQ 7.7 RADAR	ZINGG I-FLQ 9.9 RADAR	BOSSI I-FLQ 19.3 RADAR	
CATEGORY		A	B	C	D
S-ILS 17C		762/18		200 (200-1/2)	
S-LOC 17C		1000/24	438 (400-1/2)	1000/40	438 (400-3/4)
SIDESTEP 17R		1140/55 573 (600-1)		1140-1 1/2 573 (600-1 1/2)	



SC-2, 11 JUL 2024 to 08 AUG 2024

SC-2, 11 JUL 2024 to 08 AUG 2024