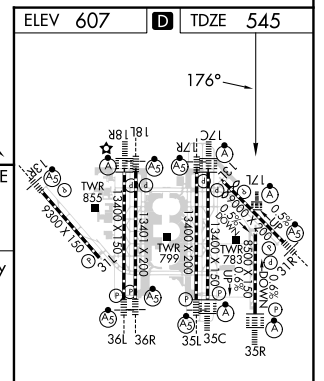
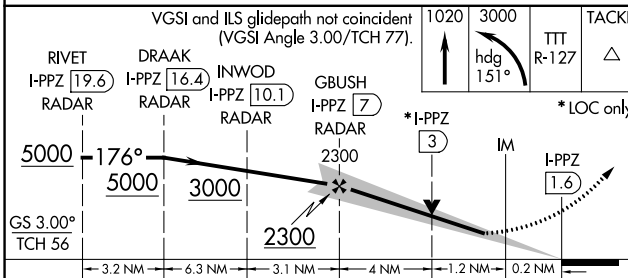
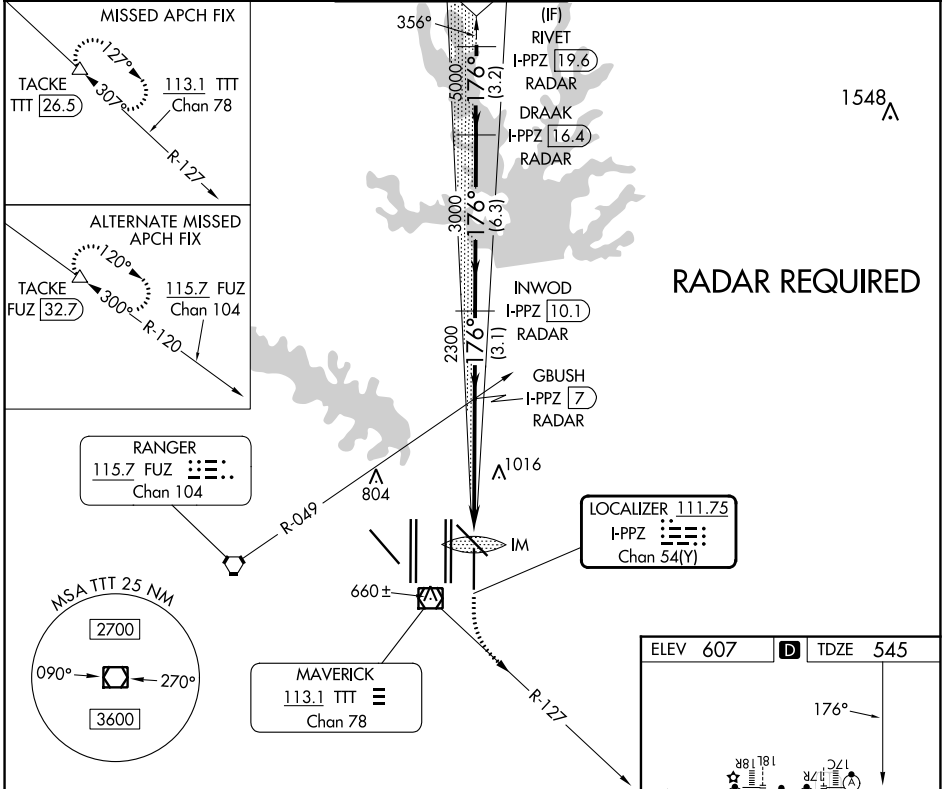


LOC/DME I-PPZ <b>111.75</b> Chan <b>54</b> (Y)	APP CRS <b>176°</b>	Rwy Idg TDZE Apt Elev	<b>8500</b> <b>545</b> <b>607</b>
--	------------------------	-----------------------------	---

# ILS or LOC RWY 17L

DALLAS-FORT WORTH INTL (DFW)

<p>Simultaneous approach authorized with Rwy 17C/R and Rwy 18L/R. DME required.</p>	<p>ALSF-2</p>	<p>MISSED APPROACH: Climb to 1020 then climbing left turn to 3000 on heading 151° and TTT VOR/DME R-127 to TACKE/TTT 26.5 DME and hold.</p>			
<p>D-ATIS ARR <b>123.775</b> DEP <b>135.925</b></p>	<p>REGIONAL APP CON <b>119.4</b></p>	<p>DFW TOWER <b>126.55 127.5</b> EAST <b>124.15 134.9</b> WEST</p>	<p>GND CON <b>121.65 121.8</b> EAST <b>121.85</b> WEST</p>	<p>CLNC DEL <b>128.25</b></p>	<p>CPDLC</p>



CATEGORY	A	B	C	D
S-ILS 17L	745/18 200 (200-½)			
S-LOC 17L	1040/24	495 (500-½)	1040/50	495 (500-1)

HIRL all Rwys					
REIL Rwys 13L and 31L					
TDZ/CL all Rwys except 13L and 31L					
FAF to MAP 5.4 NM					
Knots	60	90	120	150	180
Min:Sec	5:24	3:36	2:42	2:10	1:48

SC-2, 11 JUL 2024 to 08 AUG 2024

SC-2, 11 JUL 2024 to 08 AUG 2024