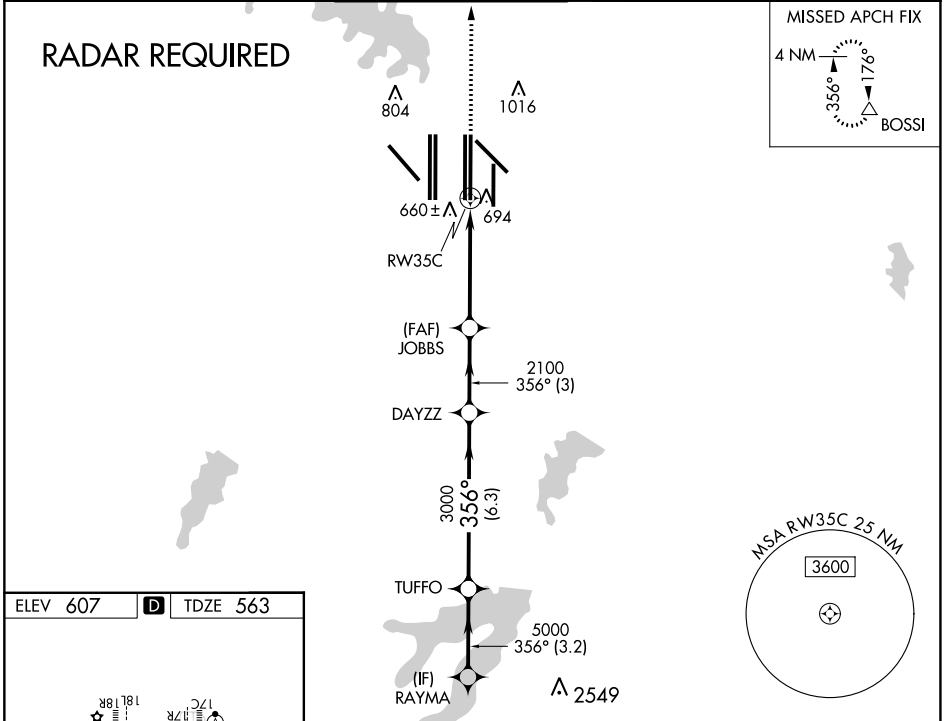


WAAS CH 40025 W35D	APP CRS 356°	Rwy Idg 13400 TDZE 563 Apt Elev 607
--	------------------------	--

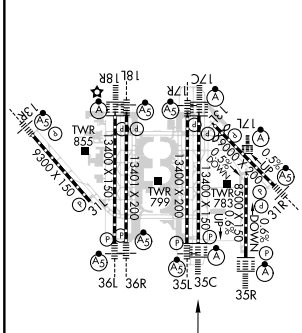
RNAV (GPS) RWY 35C

DALLAS-FORT WORTH INTL (DFW)

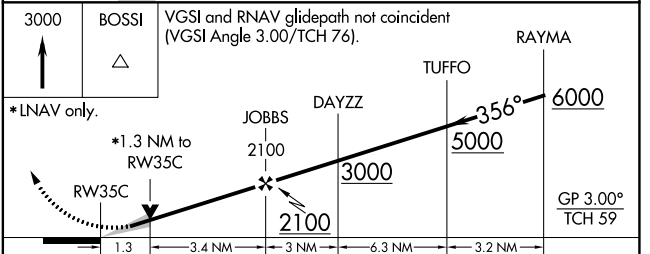
<p>▽ For uncompensated Baro-VNAV systems, LNAV/VNAV NA below -4°C (25°F) or above 54°C (130°F). For inop ALSF, increase LNAV/VNAV all Cats visibility to RVR 6000. Simultaneous approach authorized with Rwy 36 L/R and Rwy 35R. DME/DME RNP-0.3 NA. LNAV procedure NA during simultaneous operations. Use of FD or AP providing RNAV track guidance required during simultaneous operations.</p>		<p>ALSF-2</p>	<p>MISSED APPROACH: Climb to 3000 direct BOSSI and hold.</p>		
<p>D-ATIS ARR 123.775 DEP 135.925</p>	<p>REGIONAL APP CON 127.075</p>	<p>DFW TOWER 126.55 127.5 EAST 124.15 134.9 WEST</p>	<p>GND CON 121.65 121.8 EAST 121.85 WEST</p>	<p>CLNC DEL 128.25</p>	<p>CPDLC</p>



ELEV 607	D	TDZE 563
----------	----------	----------



HIRL all Rwy
REIL Rwy 13L and 31L
TDZ/CL all Rwy except 13L and 31L



CATEGORY	A	B	C	D
LPV DA		763/18	200 (200-½)	
LNAV/VNAV DA		932/40	369 (400-¾)	
LNAV MDA	1040/24	477 (500-½)	1040/50	477 (500-1)

SC-2, 11 JUL 2024 to 08 AUG 2024

SC-2, 11 JUL 2024 to 08 AUG 2024