

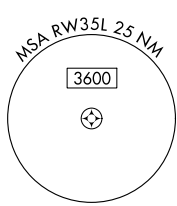
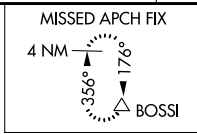
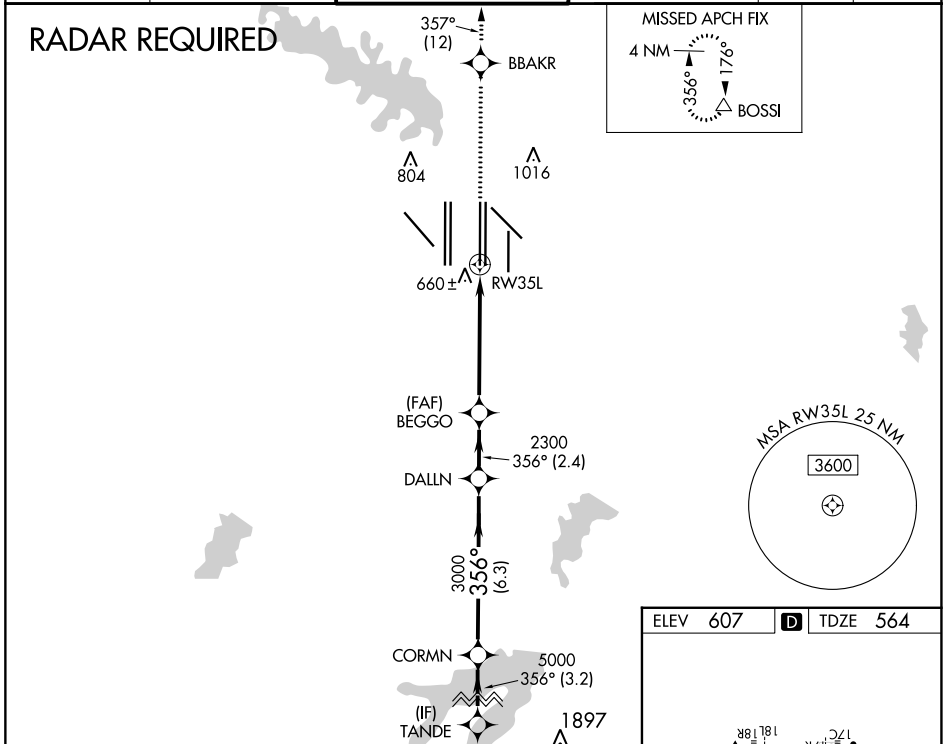
WAAS CH <b>45805</b> <b>W35B</b>	APP CRS <b>356°</b>	Rwy Idg <b>13400</b> TDZE <b>564</b> Apt Elev <b>607</b>
--	------------------------	--

# RNAV (GPS) RWY 35L

DALLAS-FORT WORTH INTL (DFW)

<p><b>▽</b> For uncompensated Baro-VNAV systems, LNAV/VNAV NA below -4°C (25°F) or above 54°C (130°F). Simultaneous approach authorized with Rwy 36L/R and Rwy 35R. DME/DME RNP-0.3 NA. LNAV procedure NA during simultaneous operations. Use of FD or AP providing RNAV track guidance required during simultaneous operations.</p>		<p>MALSR A5</p>	<p>MISSED APPROACH: Climb to 3000 direct BBAKR and on track 357° to BOSSI and hold.</p>		
D-ATIS ARR <b>123.775</b> DEP <b>135.925</b>	REGIONAL APP CON <b>127.075</b>	DFW TOWER <b>126.55 127.5 EAST</b> <b>124.15 134.9 WEST</b>	GND CON <b>121.65 121.8 EAST</b> <b>121.85 WEST</b>	CLNC DEL <b>128.25</b>	CPDLC

## RADAR REQUIRED



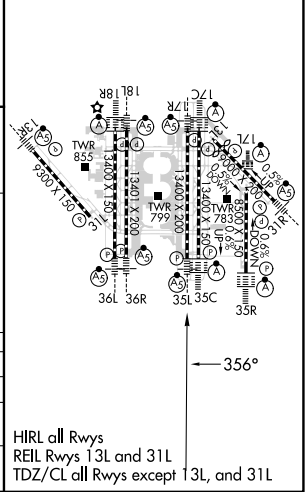
ELEV 607	<b>D</b> TDZE 564
----------	-------------------

VGSI and RNAV glidepath not coincident (VGSI Angle 3.00/TCH 63).

TANDE	CORMN	DALLN	BEGGO	BBAKR	BOSSI	
6000	5000	3000	2300	tr 357°	△	
GP 3.00° TCH 47						
	3.2 NM	6.3 NM	2.4 NM	4.1 NM	1.2	
CATEGORY	A		B		C	D
LPV DA	764/18		200 (200-½)			
LNAV/VNAV DA	928/40		364 (400-¾)			
LNAV MDA	1020/24 456 (500-½)		1020/45 456 (500-¾)			

\*1.2 NM to RW35L

\*RNAV only.



HIRL all Rwys  
REIL Rwy 13L and 31L  
TDZ/CL all Rwys except 13L, and 31L

SC-2, 11 JUL 2024 to 08 AUG 2024

SC-2, 11 JUL 2024 to 08 AUG 2024