

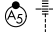
APP CRS	Rwy Idg	9300
135°	TDZE	591
	Apt Elev	606

RNAV (RNP) Z RWY 13R

DALLAS-FORT WORTH INTL (DFW)

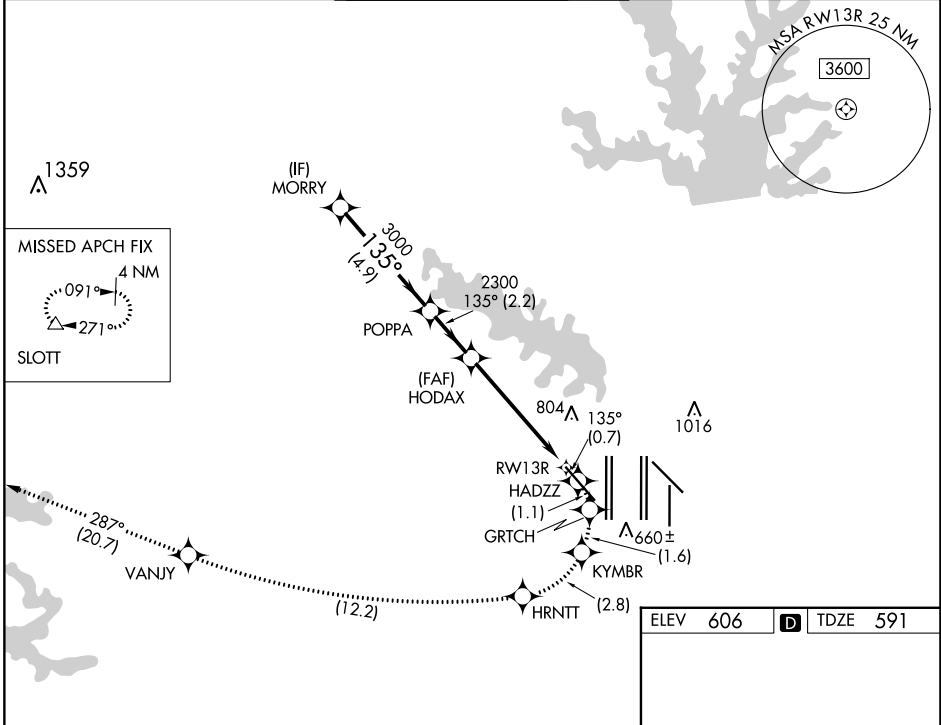
RNP AR APCH. RF required.

▽ For uncompensated Baro-VNAV systems, procedure NA below -6°C or above 54°C. Missed approach requires RNP less than 1.0.

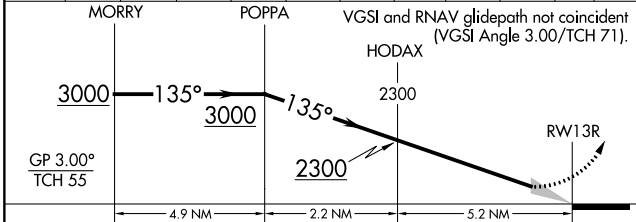
MALSR 

MISSED APPROACH: (Do not exceed 185K until HRNTT) Climb to 3000 on the RNAV missed approach route to SLOTT and hold.

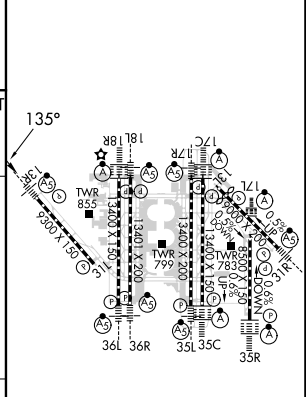
D-ATIS	REGIONAL APP CON	DFW TOWER	GND CON	CLNC DEL	CPDLC
ARR 123.775	133.15 118.1	126.55 127.5 EAST 124.15 134.9 WEST	121.65 121.8 EAST 121.85 WEST	128.25	
DEP 135.925					



3000	HADZZ	GRTRCH	KYMBR	HRNTT	VANJY	tr 287°	SLOTT
tr 135°							



ELEV	606	TDZE	591
------	-----	------	-----



CATEGORY	A	B	C	D
RNP 0.30 DA		1041/45	450 (500-7%)	

AUTHORIZATION REQUIRED

HIRL all Rwys
REIL Rwys 13L and 31L
TDZ/CL all Rwys except 13L and 31L

SC-2, 11 JUL 2024 to 08 AUG 2024

SC-2, 11 JUL 2024 to 08 AUG 2024