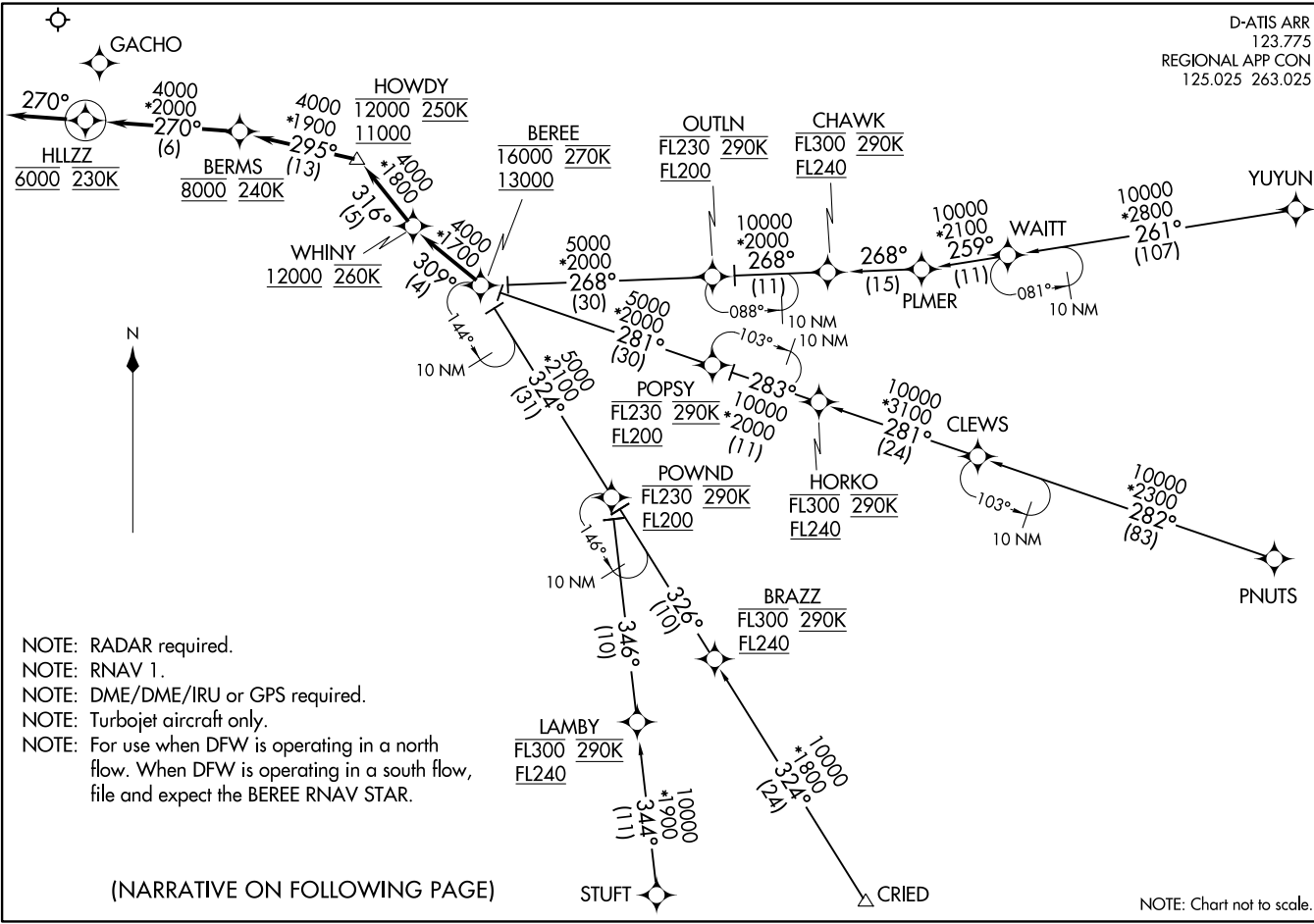


D-ATIS ARR  
123.775  
REGIONAL APP CON  
125.025 263.025

(BEREE:WHINY4) 17117  
AL-6039 (FAA)  
DALLAS-FORT WORTH INTL (DFW)  
DALLAS-FORT WORTH, TEXAS



- NOTE: RADAR required.
- NOTE: RNAV 1.
- NOTE: DME/DME/IRU or GPS required.
- NOTE: Turbojet aircraft only.
- NOTE: For use when DFW is operating in a north flow. When DFW is operating in a south flow, file and expect the BEREE RNAV STAR.

(NARRATIVE ON FOLLOWING PAGE)

NOTE: Chart not to scale.

WHINY FOUR ARRIVAL (RNAV)  
(BEREE:WHINY4) 26MAY16  
DALLAS-FORT WORTH, TEXAS  
DALLAS-FORT WORTH INTL (DFW)

# WHINY FOUR ARRIVAL (RNAV)

## ARRIVAL ROUTE DESCRIPTION

CRIED TRANSITION (CRIED.WHINY4):

OUTLN TRANSITION (OUTLN.WHINY4): (ATC assigned only.)

PNUTS TRANSITION (PNUTS.WHINY4):

POPSY TRANSITION (POPSY.WHINY4): (ATC assigned only.)

POWND TRANSITION (POWND.WHINY4): (ATC assigned only.)

STUFT TRANSITION (STUFT.WHINY4):

YUYUN TRANSITION (YUYUN.WHINY4):

From BEREE on track 309° to cross WHINY at or above 12000 and at 260K, then on track 316° to cross HOWDY between 11000 and 12000 and at 250K, then on track 295° to cross BERMS at 8000 and at 240K, then on track 270° to cross HLLZZ at 6000 and at 230K, then on track 270°. Expect RADAR vectors to final approach course.

SC-2, 11 JUL 2024 to 08 AUG 2024

SC-2, 11 JUL 2024 to 08 AUG 2024