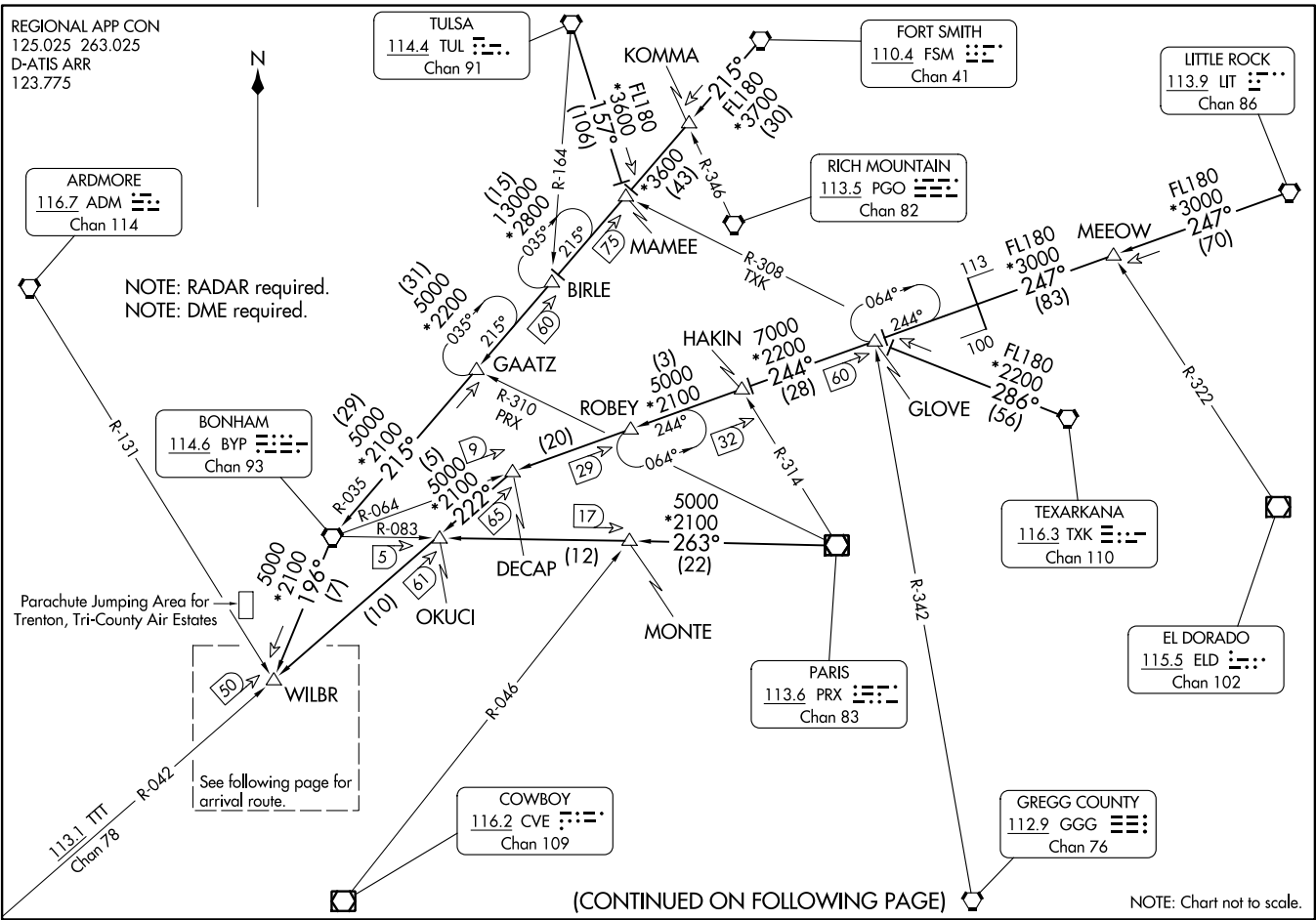


WILBR NINE ARRIVAL  
(WILBR: WILBR9) 11 JUL 24



(CONTINUED ON FOLLOWING PAGE)

NOTE: Chart not to scale.

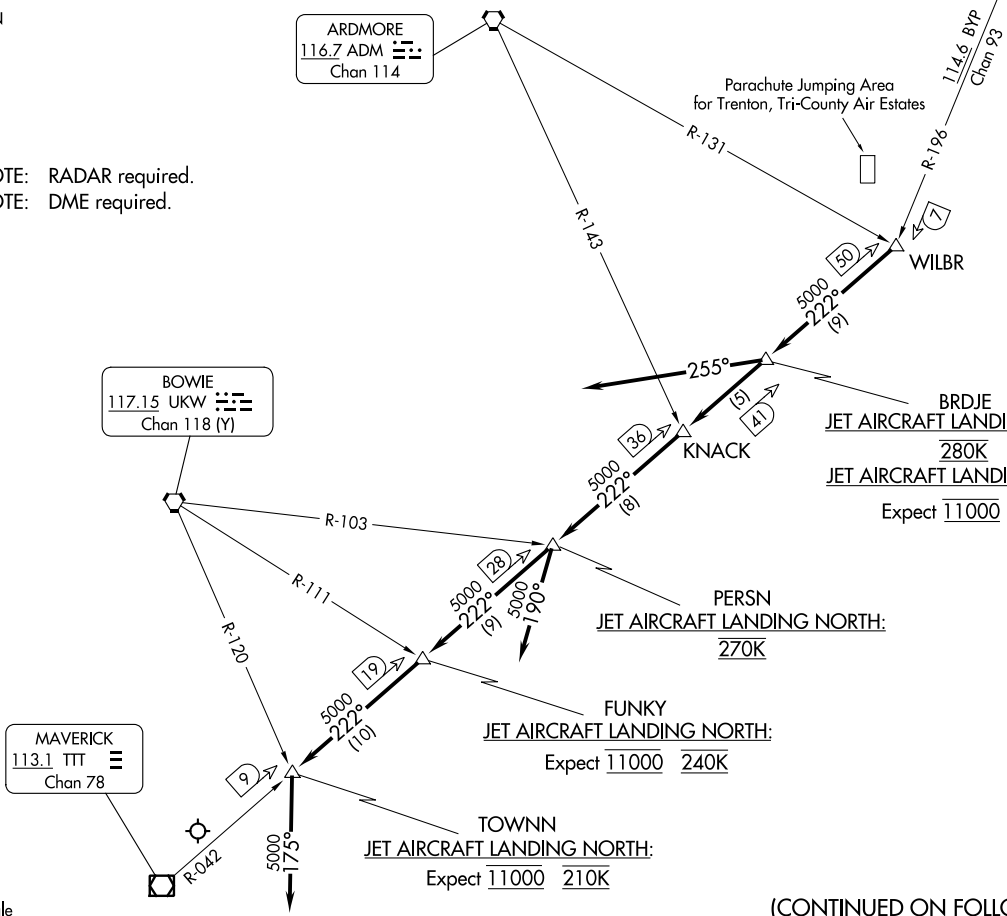
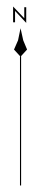
WILBR NINE ARRIVAL  
(WILBR, WILBR9) 11 JUL 24

Arrival Routes

DALLAS-FORT WORTH, TEXAS  
DALLAS-FORT WORTH INTL (DFW)

REGIONAL APP CON  
125.025 263.025  
D-ATIS ARR  
123.775

NOTE: RADAR required.  
NOTE: DME required.



ARDMORE  
116.7 ADM  
Chan 114

BOWIE  
117.15 UKW  
Chan 118 (Y)

MAVERICK  
113.1 TTT  
Chan 78

BRDJE  
JET AIRCRAFT LANDING NORTH:  
280K  
JET AIRCRAFT LANDING SOUTH:  
Expect 11000 250K

PERSN  
JET AIRCRAFT LANDING NORTH:  
270K

FUNKY  
JET AIRCRAFT LANDING NORTH:  
Expect 11000 240K

TOWNN  
JET AIRCRAFT LANDING NORTH:  
Expect 11000 210K

(CONTINUED ON FOLLOWING PAGE)

(WILBR, WILBR9) 24193

Arrival Routes

AL-6039 (FAA)

DALLAS-FORT WORTH INTL (DFW)  
DALLAS-FORT WORTH, TEXAS

# WILBR NINE ARRIVAL

## ARRIVAL ROUTE DESCRIPTION

BONHAM TRANSITION (BYP.WILBR9): From over BYP VORTAC on BYP R-196 to WILBR. Thence . . . .

FORT SMITH TRANSITION (FSM.WILBR9): From over FSM VORTAC on FSM R-215 to MAMEE, then on BYP R-035 to BYP VORTAC, then on BYP R-196 to WILBR. Thence . . . .

LITTLE ROCK TRANSITION (LIT.WILBR9): From over LIT VORTAC on LIT R-247 to MEEOW, then on LIT R-247 and BYP R-064 to GLOVE, then on BYP R-064 to DECAP, then on TTT R-042 to WILBR. Thence . . . .

PARIS TRANSITION (PRX.WILBR9): From over PRX VOR/DME on PRX R-263 and BYP R-083 to MONTE, then on BYP R-083 to OKUCI, then on TTT R-042 to WILBR. Thence . . . .

TEXARKANA TRANSITION (TXK.WILBR9): From over TXK VORTAC on TXK R-286 to GLOVE, then on BYP R-064 to DECAP, then on TTT R-042 to WILBR. Thence . . . .

TULSA TRANSITION (TUL.WILBR9): From over TUL VORTAC on TUL R-157 to MAMEE, then on BYP R-035 to BYP VORTAC, then on BYP R-196 to WILBR. Thence . . . .

. . . . from over WILBR on TTT R-042 . . . .

ALL AIRCRAFT LANDING SOUTH: To BRDJE depart heading 255°, expect RADAR vectors for base leg.

JETS LANDING NORTH: To BRDJE, to KNACK, to PERSN, to FUNKY, to TOWNNN, then depart heading 175°, expect RADAR vectors.

PROP AIRCRAFT LANDING NORTH: To BRDJE, to KNACK, to PERSN, then depart heading 190°, expect RADAR vectors.

SC-2, 11 JUL 2024 to 08 AUG 2024

SC-2, 11 JUL 2024 to 08 AUG 2024