

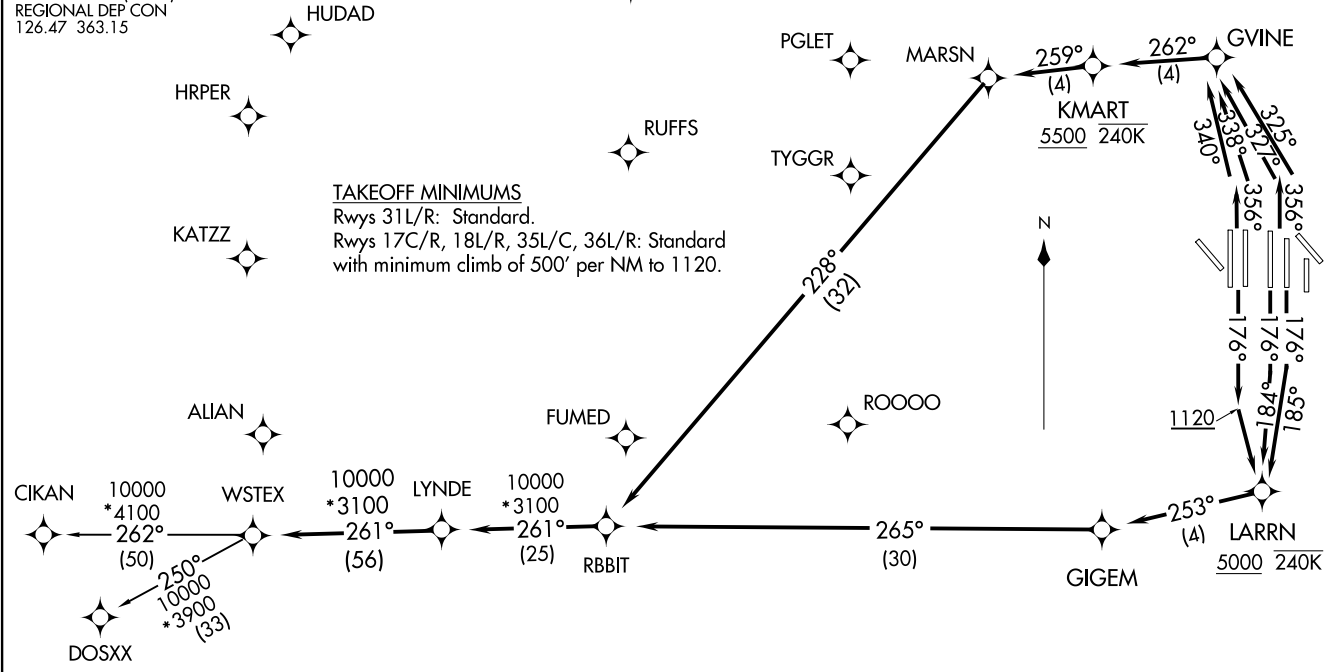
WSTEX TWO DEPARTURE (RNAV) (WSTEX2.WSTEX) 04FEB16 DALLAS-FORT WORTH, TEXAS

D-ATIS DEP  
135.925  
CLNC DEL  
128.25  
CPDLC  
GND CON  
121.65 121.8 (EAST)  
121.85 (WEST)  
DFW TOWER  
126.55 127.5 (EAST)  
124.15 134.9 (WEST)  
REGIONAL DEP CON  
126.47 363.15

**TOP ALTITUDE:**  
**RWY 17C/R, 18L/R,**  
**35C/L, 36L/R: 10000**  
**RWY 31L/R: 5000**

NOTE: DME/DME/IRU or GPS required.  
NOTE: RNAV 1.  
NOTE: For use by turbojets only.  
NOTE: RNAV capable props: File and expect the SWABR RNAV SID.  
NOTE: Non-RNAV capable props: File and expect KINGDOM or COYOTE DEPARTURE.  
NOTE: RADAR required.

TAKEOFF MINIMUMS  
Rwys 31L/R: Standard.  
Rwys 17C/R, 18L/R, 35L/C, 36L/R: Standard  
with minimum climb of 500' per NM to 1120.



(NARRATIVE ON FOLLOWING PAGE)

NOTE: Chart not to scale

(WSTEX2.WSTEX) 23334 AL-6039 (FAA) DALLAS-FORT WORTH INTL (DFTW) (WSTEX TWO DEPARTURE (RNAV)) DALLAS-FORT WORTH, TEXAS

# WSTEX TWO DEPARTURE (RNAV)



## DEPARTURE ROUTE DESCRIPTION

TAKEOFF RUNWAY 17C: Climb heading 176° to intercept course 185° to cross LARRN at or above 5000, then on track 253° to GIGEM, then on track 265° to RBBIT, thence . . . .

TAKEOFF RUNWAYS 17R: Climb heading 176° to intercept course 184° to cross LARRN at or above 5000, then on track 253° to GIGEM, then on track 265° to RBBIT, thence . . . .

TAKEOFF RUNWAYS 18L/R: Climb heading 176° to 1120, then direct to cross LARRN at or above 5000, then on track 253° to GIGEM, then on track 265° to RBBIT, thence . . . .

TAKEOFF RUNWAY 35C: Climb heading 356° to intercept course 325° to GVINE, then on track 262° to cross KMART at or above 5500, then on track 259° to MARSN, then on track 228° to RBBIT, thence . . . .

TAKEOFF RUNWAY 35L: Climb heading 356° to intercept course 327° to GVINE, then on track 262° to cross KMART at or above 5500, then on track 259° to MARSN, then on track 228° to RBBIT, thence . . . .

TAKEOFF RUNWAY 36L: Climb heading 356° to intercept course 340° to GVINE, then on course 262° to cross KMART at or above 5500, then on track 259° to MARSN, then on track 228° to RBBIT, thence . . . .

TAKEOFF RUNWAY 36R: Climb heading 356° to intercept course 338° to GVINE, then on course 262° to cross KMART at or above 5500, then on track 259° to MARSN, then on track 228° to RBBIT, thence . . . .

. . . . on track 261° to LYNDE, then on track 261° to WSTEX, then on (transition).  
Maintain 10000, expect filed altitude ten minutes after departure.

TAKEOFF RUNWAYS 31L/R: Climb heading assigned by ATC, expect RADAR vectors to RBBIT, thence . . . .

. . . . on track 261° to LYNDE, then on track 261° to WSTEX, then on (transition).  
Maintain 5000, expect filed altitude ten minutes after departure.

CIKAN TRANSITION (WSTEX2.CIKAN)

DOSXX TRANSITION (WSTEX2.DOSXX)

SC-2, 11 JUL 2024 to 08 AUG 2024

SC-2, 11 JUL 2024 to 08 AUG 2024