

NDB UWL 385	APP CRS 087°	Rwy Idg 4201
		TDZE 1089
		Apt Elev 1090

NDB RWY 10

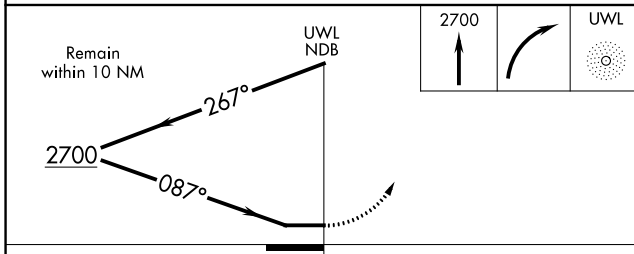
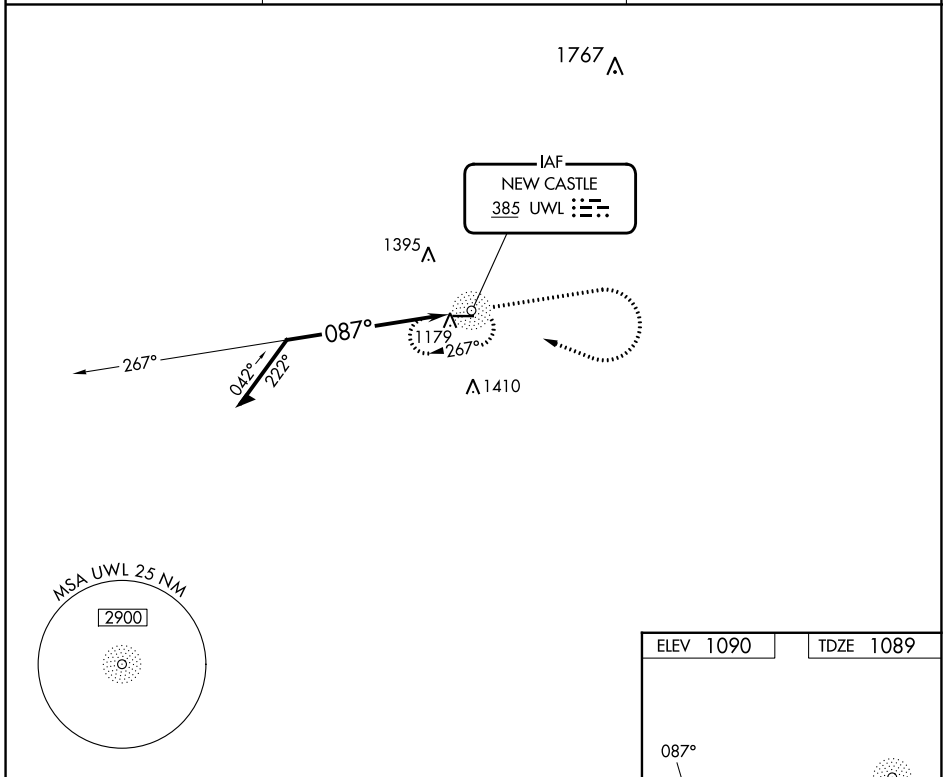
NEW CASTLE HENRY COUNTY MARLATT FLD (UWL)

RADAR required for procedure entry.

▼ Rwy 10 helicopter visibility reduction below 3/4 SM NA. When local altimeter setting not received, use Anderson altimeter setting and increase all MDAs 80 feet, S-10 visibility Cat C/D 1/2 SM, and Circling visibility Cat C/D 1/4 SM.

MISSED APPROACH: Climb to 2700 then right turn direct UWL NDB and hold.

AWOS-3 132.375	INDIANAPOLIS APP CON 135.45 317.8	UNICOM 123.05 (CTAF)
--------------------------	---	--------------------------------



ELEV 1090	TDZE 1089
-----------	-----------

Diagram of Runway 10-28, measuring 4201 feet by 75 feet. The runway is oriented along the 087° heading. A star symbol indicates the runway location.

MIRL Rwy 10-28
REIL Rwy 10 and 28

CATEGORY	A	B	C	D
S-10	1680-1	591 (600-1)	1680-1 3/4	591 (600-1 3/4)
CIRCLING	1680-1	590 (600-1)	1720-1 3/4 630 (700-1 3/4)	1720-2 630 (700-2)

NDB RWY 10

EC-2, 11 JUL 2024 to 08 AUG 2024

EC-2, 11 JUL 2024 to 08 AUG 2024