

NDB CSS 414	APP CRS 223°	Rwy Idg 5097
		TDZE 979
		Apt Elev 980

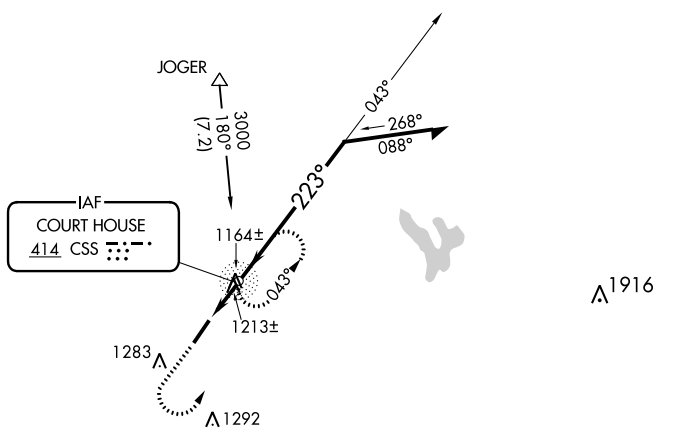
NDB RWY 23

FAYETTE COUNTY (I23)

⚠ When local altimeter setting not received, use Wilmington Air Park altimeter setting and increase all MDAs 60 feet, and Circling visibility Cat C ¼ SM. Procedure NA at night. Rwy 23 helicopter visibility reduction below 1 SM NA.

⚠ MISSED APPROACH: Climb to 2000, then climbing left turn to 2600 direct CSS NDB and hold.

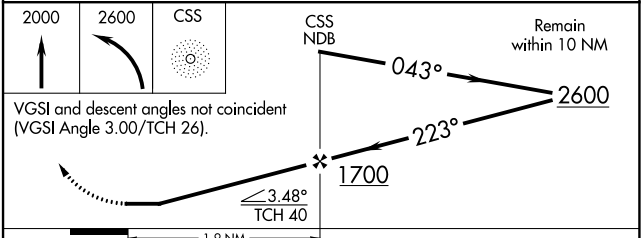
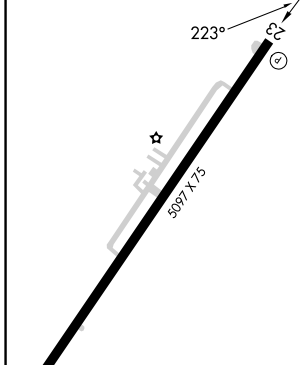
AWOS-3 118.775	COLUMBUS APP CON 134.0 279.6	UNICOM 122.8 (CTAF) 📻
--------------------------	--	--



EC-2, 11 JUL 2024 to 08 AUG 2024

EC-2, 11 JUL 2024 to 08 AUG 2024

ELEV	980	TDZE	979
------	-----	------	-----



FAF to MAP 1.9 NM					
Knots	60	90	120	150	180
Min:Sec	1:54	1:16	0:57	0:46	0:38

CATEGORY	A	B	C	D
S-23	1580-1	601 (600-1)	1580-1¾ 601 (600-1¾)	1580-2 601 (600-2)
📻 CIRCLING	1580-1 600 (600-1)	1640-1 660 (700-1)	1640-1¾ 660 (700-1¾)	1660-2¼ 680 (700-2¼)