

NDB/DME YP 317	APP CRS 074°	Rwy ldg TDZE Apt Elev	6000 91 91
Chan 122 (117.5)			

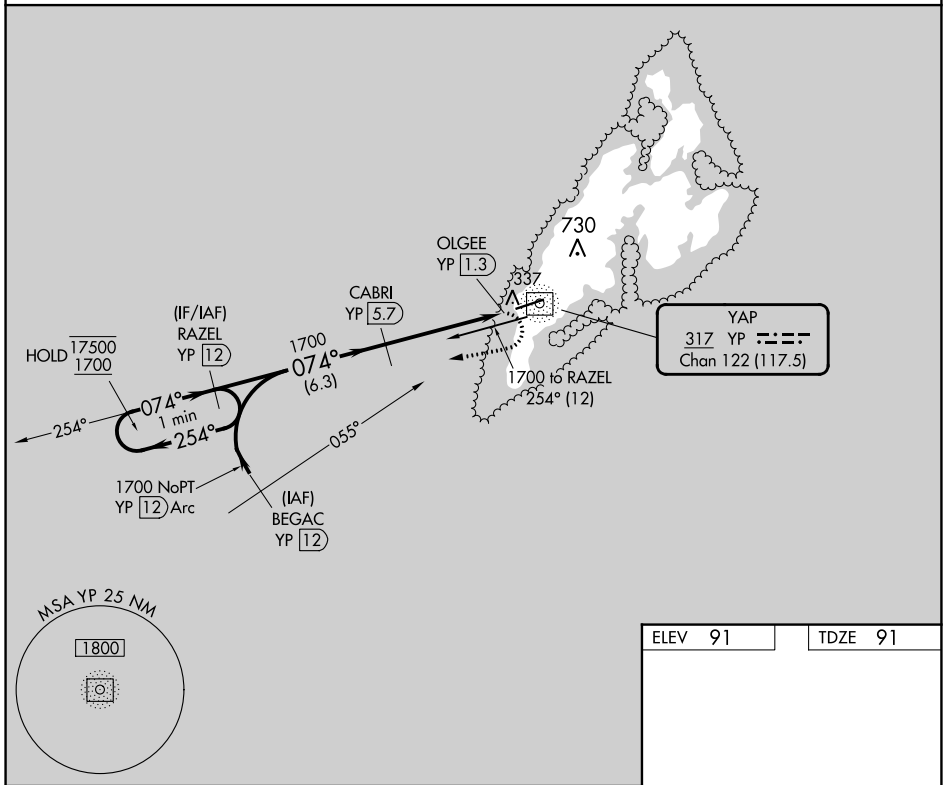
NDB/DME RWY 7

YAP INTL (T11)(PTYA)

▼ Circling NA north of Rwy 7-25.
Rwy 7 helicopter visibility reduction below 3/4 SM NA.
GPS required for procedure entry at BEGAC.
No controlled airspace below 5500.

MISSED APPROACH: Climbing right turn to 1700 on 254° bearing from YP NDB/DME to RAZEL/12 DME and hold.

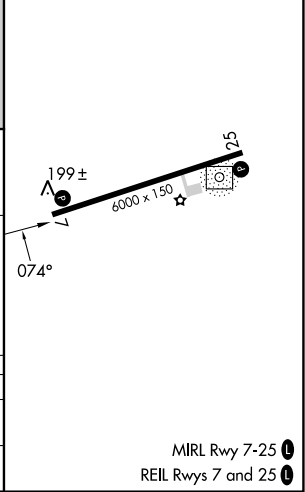
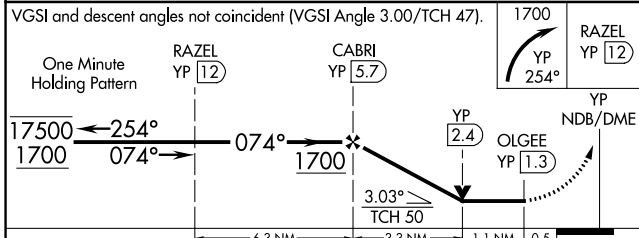
YAP RADIO
123.60 (CTAF)



PAC, 11 JUL 2024 to 05 SEP 2024

PAC, 11 JUL 2024 to 05 SEP 2024

ELEV 91	TDZE 91
---------	---------



CATEGORY	A	B	C	D
S-7	640-1	549 (600-1)	640-1 5/8	549 (600-1 5/8)
C CIRCLING	640-1	549 (600-1)	640-1 5/8 549 (600-1 5/8)	660-2 569 (600-2)

MIRL Rwy 7-25
REIL Rws 7 and 25