

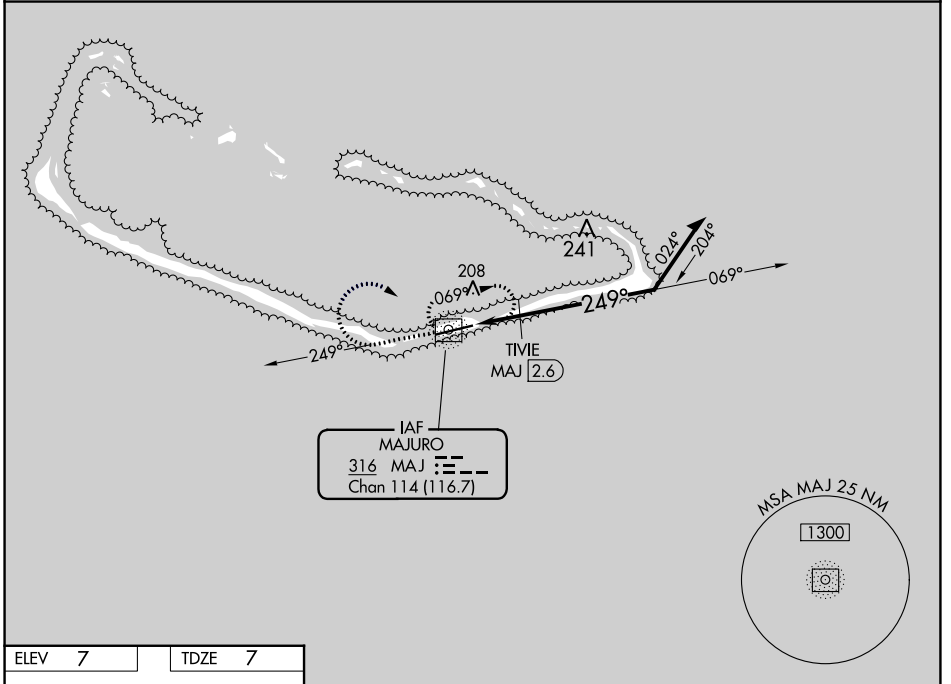
NDB/DME MAJ 316	APP CRS 249°	Rwy ldg TDZE Apt Elev	7913 7 7
Chan 114 (116.7)			

NDB RWY 25

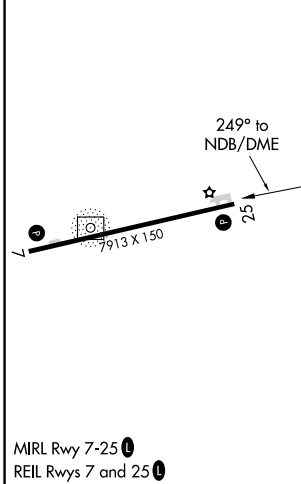
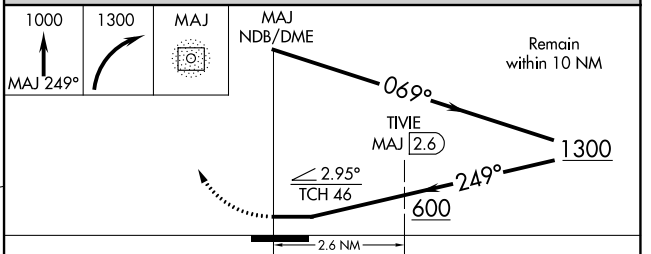
AMATA KABUA INTL (MAJ)(PKMJ)

⚠ NA Rwy 25 helicopter visibility reduction below 3/4 SM NA. Obtain local altimeter setting on CTAF; when not received, procedure NA. Uncontrolled airspace below 5500. MISSED APPROACH: Climb to 1000 on MAJ NDB/DME bearing 249° then climbing right turn to 1300 direct MAJ NDB/DME and hold.

MAJURO RADIO
123.6 (CTAF)



ELEV 7	TDZE 7
--------	--------



CATEGORY	A	B	C	D
S-25	600-1	593 (600-1)	600-1¾	593 (600-1¾)
C CIRCLING	600-1	593 (600-1)	600-1¾ 593 (600-1¾)	600-2 593 (600-2)
TIVIE FIX MINIMUMS (DME REQUIRED)				
S-25	520-1	513 (600-1)	520-1¾	513 (600-1¾)
C CIRCLING	520-1	513 (600-1)	520-1½ 513 (600-1½)	560-2 553 (600-2)

NDB RWY 25

PAC, 11 JUL 2024 to 05 SEP 2024

PAC, 11 JUL 2024 to 05 SEP 2024