

APP CRS	Rwy Idg	7913
246°	TDZE	7
	Apt Elev	7

RNAV (GPS) RWY 25

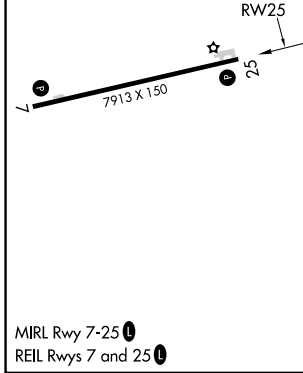
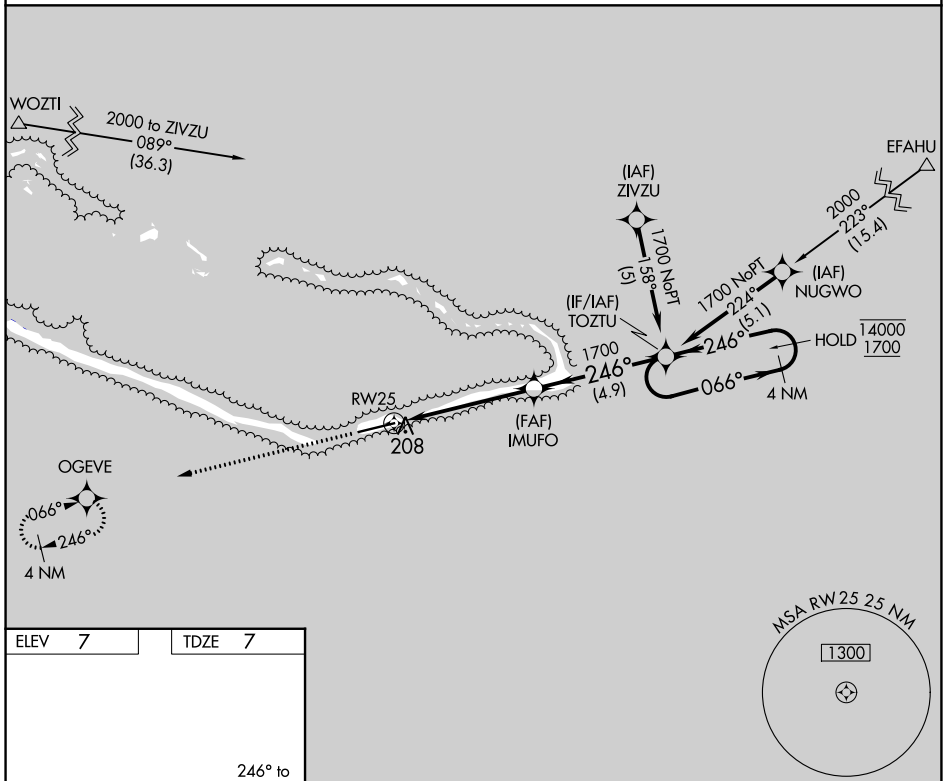
AMATA KABUA INTL (MAJ)(PKMJ)

RNP APCH-GPS.

▼ Rwy 25 helicopter visibility reduction below 3/4 SM NA. Obtain local altimeter setting on CTAF; when not received, procedure NA. Uncontrolled airspace below 5500.

MISSED APPROACH: Climb to 1700 direct OGEVE and hold.

MAJURO RADIO
123.6 (CTAF) 0



ELEV 7	TDZE 7				
1700	OGEVE	VGSI and RNAV glidepath not coincident (VGSI Angle 3.00/TCH 46).			
	IMUFO	TOZTU	4 NM Holding Pattern		
	1.3 NM to RW25	1700	066°	14000	
	≤ 3.00° TCH 54	← 246°	← 246°	1700	
	1.3	3.9 NM	4.9 NM		
CATEGORY	A	B	C	D	
LNAV MDA	460-1	453 (500-1)	460-1 3/8	453 (500-1 3/8)	
C CIRCLING	520-1	513 (600-1)	520-1 1/2 513 (600-1 1/2)	560-2 553 (600-2)	

PAC, 11 JUL 2024 to 05 SEP 2024

PAC, 11 JUL 2024 to 05 SEP 2024