


LOC/DME I-CFU 108.3 Chan 20	APP CRS 331°	Rwy ldg 5500 TDZE 217 Apt Elev 236
--	------------------------	---

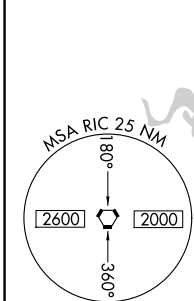
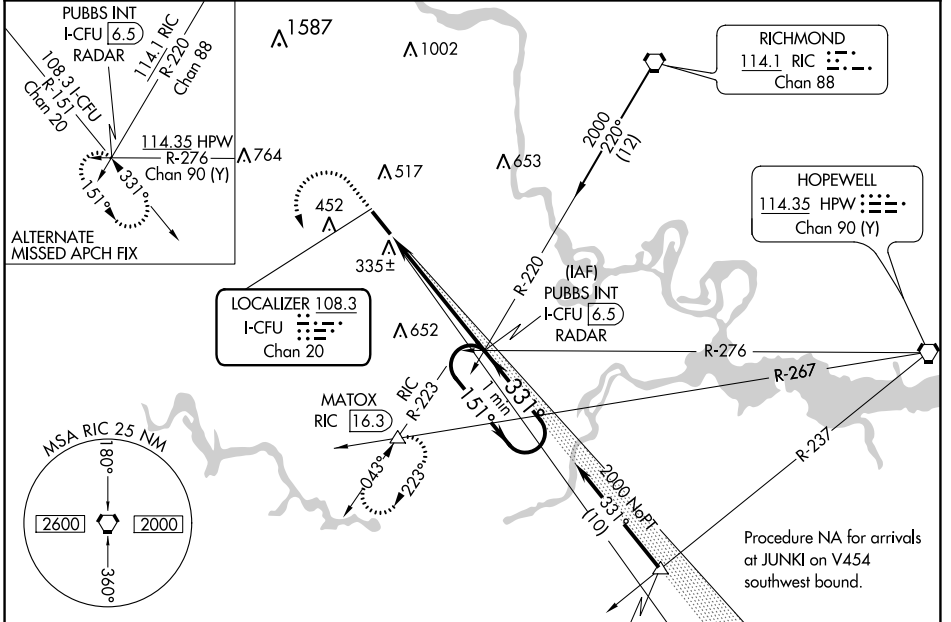
ILS or LOC RWY 33

RICHMOND EXEC/CHESTERFIELD COUNTY (F'CI)

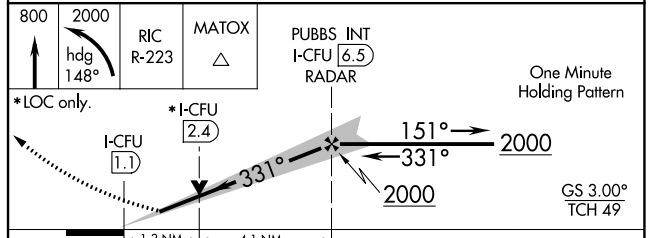
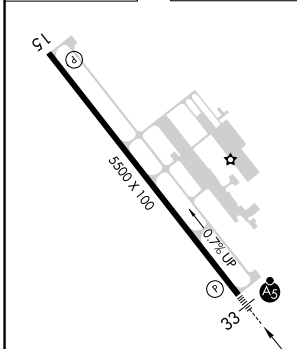
⚠ When local altimeter setting not received, use Richmond Intl altimeter setting; increase DA to 453 feet; increase all MDAs 40 feet and S-LOC 33 visibility Cat C/D 1/8 SM and Circling visibility Cat D 1/4 SM. VDP NA with Richmond Intl altimeter setting.

MALSR  MISSED APPROACH: Climb to 800, then climbing left turn to 2000 via heading 148° and RIC VORTAC R-223 to MATOX INT/RIC 16.3 DME and hold.

AWOS-3PT 128.625	POTOMAC APP CON 126.75 307.2	CLNC DEL 124.6	UNICOM 123.05 (CTAF) 
----------------------------	--	--------------------------	--



ELEV 236	TDZE 217
----------	----------



CATEGORY	A	B	C	D
S-ILS 33	417-1/2 200 (200-1/2)			
S-LOC 33	660-1/2 443 (500-1/2)	660-7/8 443 (500-7/8)		
CIRCLING	720-1 484 (500-1)	760-1 524 (600-1)	760-1 524 (600-1 1/2)	1020-2 1/2 784 (800-2 1/2)

ILS or LOC RWY 33

NE-3, 11 JUL 2024 to 08 AUG 2024

NE-3, 11 JUL 2024 to 08 AUG 2024