


LOC/DME I-LVK 110.5 Chan 42	APP CRS 255°	Rwy ldg 5253
	TDZE 400	Apt Elev 400

ILS RWY 25R

LIVERMORE MUNI (LVK)

DME required.

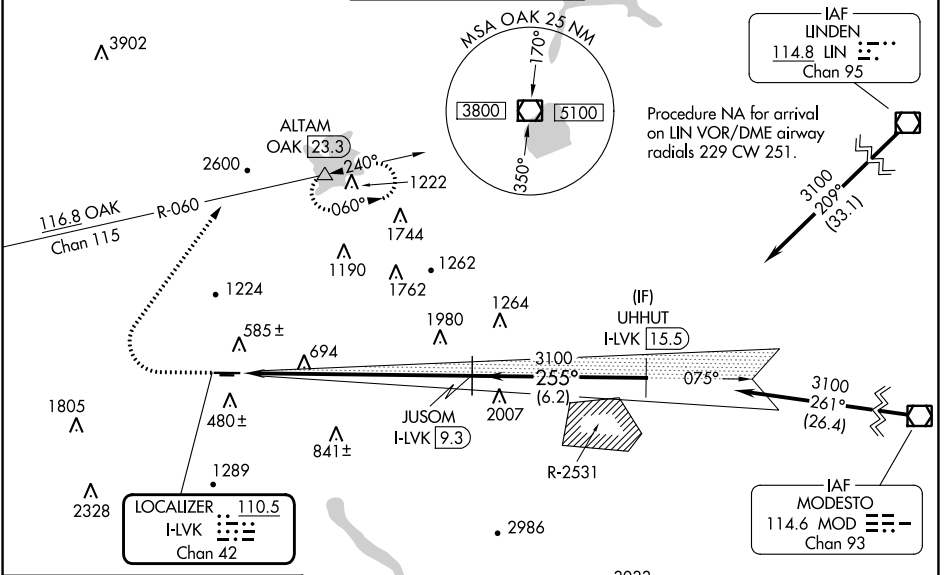
MALS



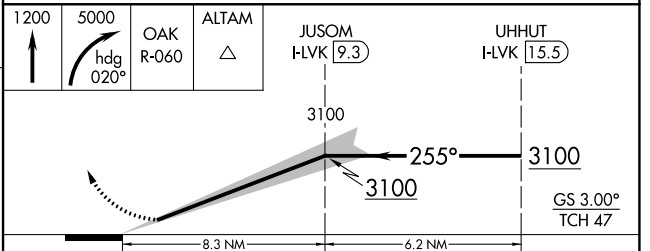
MISSED APPROACH: Climb to 1200 then climbing right turn to 5000 on heading 020° and OAK VOR/DME R-060 to ALTAM/OAK VOR/DME 23.3 DME and hold, continue climb-in-hold to 5000.

*Missed approach requires a minimum climb of 358 feet per NM to 3600, if unable to meet climb gradient, see LOC RWY 25R.

ATIS 119.65	NORCAL APP CON 123.85 278.3	LIVERMORE TOWER * 118.1(CTAF) 239.25	GND CON 121.6	UNICOM 122.95
-----------------------	---------------------------------------	---	-------------------------	-------------------------



ELEV 400	TDZE 400
----------	----------



HIRL Rwy 7L-25R
MIRL Rwy 7R-25L

CATEGORY	A	B	C	D
S-ILS 25R		600-½	200 (200-½)	

SW-2, 11 JUL 2024 to 08 AUG 2024

SW-2, 11 JUL 2024 to 08 AUG 2024