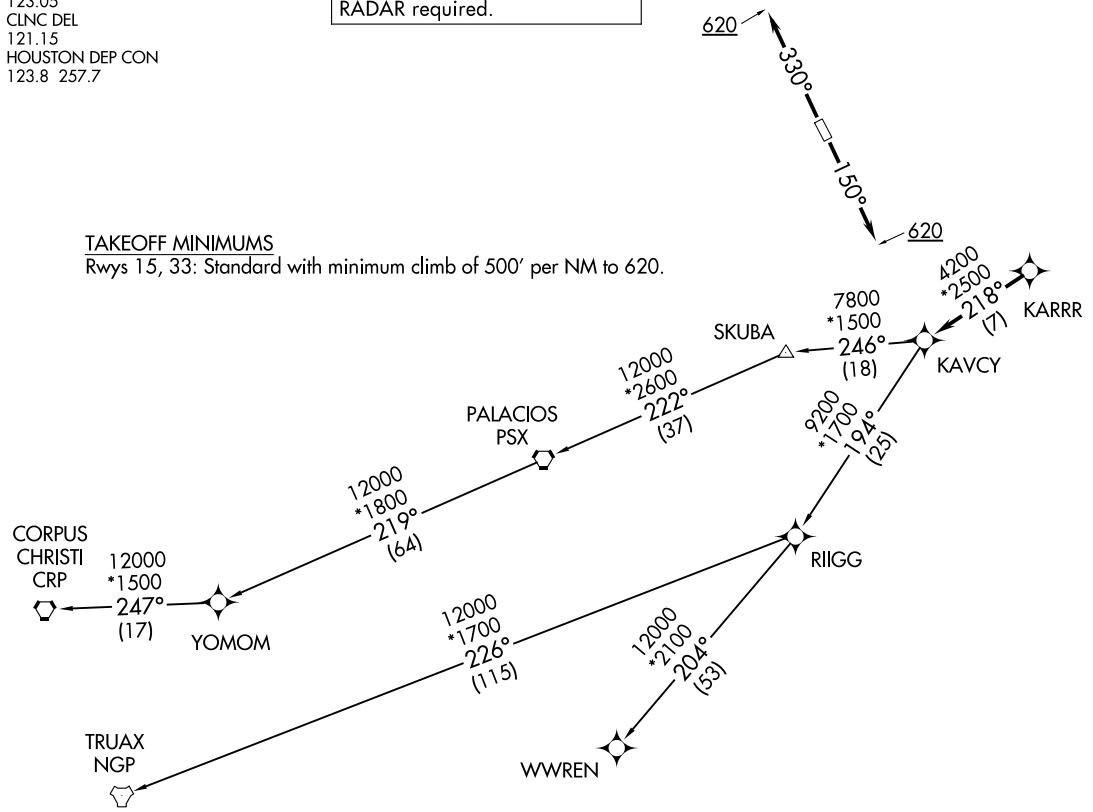


**TOP ALTITUDE:
ASSIGNED BY ATC**

RNAV-1 DME/DME/IRU or GPS.
RADAR required.

CTAF
123.05
CLNC DEL
121.15
HOUSTON DEP CON
123.8 257.7

TAKEOFF MINIMUMS
Rwys 15, 33: Standard with minimum climb of 500' per NM to 620.



(NARRATIVE ON FOLLOWING PAGE)

NOTE: Chart not to scale.

KARRR SEVEN DEPARTURE (RNAV)
(KARRR7 .KARRR) 29DEC22

(KARRR7 .KARRR) 22363
KARRR SEVEN DEPARTURE (RNAV)

AL-6079 (FAA)

HOUSTON, TEXAS
WEST HOUSTON (IWS)

WEST HOUSTON (IWS)
HOUSTON, TEXAS

KARRR SEVEN DEPARTURE(RNAV)



DEPARTURE ROUTE DESCRIPTION

TAKEOFF RUNWAY 15: Climb on heading 150° to 620, for RADAR vectors to KARRR, thence. . . .

TAKEOFF RUNWAY 33: Climb on heading 330° to 620, for RADAR vectors to KARRR, thence. . . .

. . . .on track 218° to KAVCY, then on (transition). Maintain ATC assigned altitude. Expect filed altitude 10 minutes after departure.

CORPUS CHRISTI TRANSITION (KARRR7.CRP)

PALACIOS TRANSITION (KARRR7.PSX)

TRUAX TRANSITION (KARRR7.NGP)

WWREN TRANSITION (KARRR7.WWREN)

YOMOM TRANSITION (KARRR7.YOMOM)

SC-5, 11 JUL 2024 to 08 AUG 2024

SC-5, 11 JUL 2024 to 08 AUG 2024